



# Wide-temperature rack installation for edge computing





## Overview

---

This article covers how to install an Edge model 3400 and 3800 onto a rack shelf or mounted into a 19" wide, EIA-310- E-compliant rack. VMware SD-WAN by VeloCloud.

This article covers how to install an Edge model 3400 and 3800 onto a rack shelf or mounted into a 19" wide, EIA-310- E-compliant rack. VMware SD-WAN by VeloCloud.

Compact wall-mount racks as small as 1U can be optimal for environments with limited floor space. Rack width and depth are also important size considerations. The standard width of a mountable server rack is 19 inches, so the server chassis must be less than 17.75 inches to fit within that opening.

The SmartRack® 5.5 kW self-cooling server rack enables end users to deploy standardized MDC solutions to support edge computing needs in enterprises, manufacturing, government, institutions and telecom as well as traditional network closet and server room installations. This addition to Eaton's.

Learn how server rack cooling prevents overheating, boosts performance, and ensures reliability with expert tips and advanced solutions. Server racks can get hot fast. When the heat isn't managed well, it can slow down your servers, cause shutdowns, or even damage your equipment. Over time, this.

High-density IT server racks - including telecom installations, industrial control systems, and edge computing infrastructure - concentrate significant heat generation within compact spaces. Unmanaged thermal accumulation leads to component degradation, increased failure rates, and inevitable.

This article covers how to install an Edge model 3400 and 3800 onto a rack shelf or mounted into a 19" wide, EIA-310- E-compliant rack. VMware SD-WAN by VeloCloud Rack loading—Overloading or uneven loading of racks may result in shelf or rack failure, possibly damaging the equipment and causing.

Intelligent power management company Eaton today announced it has expanded its family of self-cooling server racks with the North American launch of its new SmartRack® 5.5 kW self-cooling server rack, the highest capacity in-rack cooling



solution available. Designed for server rooms and edge.



## Wide-temperature rack installation for edge computing



### [Revolutionary IT Cooling](#)

Simple installation turns practically any rack, open or sealed, into a portable, self-contained server room. Works with standard 120V/20A power--no external components or building modification ...

### Edge Computing Rack

EDGE COMPUTING SERVER RACK COOL-RACK  
SILENT WITH COOLING CAPACITY 5.8 KW 42 U 800  
+ 150x1200x2100 mm (WxDxH) Sound-insulated  
with high quality and flame ...

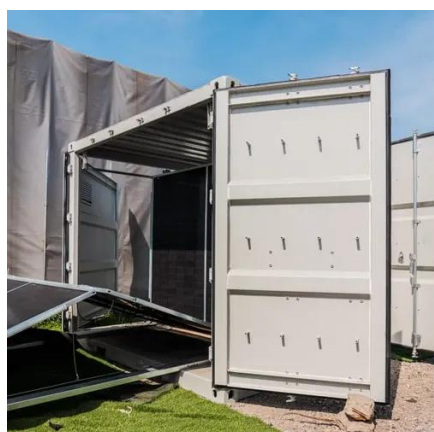


### [What Are the Best Rackmount UPS Systems for Edge Computing ...](#)

Edge computing environments demand UPS systems with small footprints, high power density, and tolerance for harsh conditions. Unlike traditional data centers, edge deployments often ...

### [How to Build Your Perfect Edge Rack](#)

This eBook explores what various types of edge deployments look like and explains how the right edge rack for any given deployment does exist. Download today and learn the right questions ...



### EDGE-3

Arguably the best all round performing air-cooled soundproof MDC in the world - the EDGE-3 replaces the need for a dedicated server room and only requires less than 1m2 of valuable ...

### [Edge Server-Design Considerations , Electronics ...](#)

The edge servers bring the computing and networking resources close to the IoT and connected devices. Edge data centers are ...



### [Top Methods for Efficient Server Rack Cooling](#)

This guide of gbc engineers explores the fundamentals of server rack cooling, and innovative technologies shaping the future of ...



### [Eaton SmartRack 5.5 kW self-cooling server rack](#)



The SmartRack® 5.5 kW self-cooling server rack enables end users to deploy standardized MDC solutions to support edge computing needs in enterprises, manufacturing, government, ...



### Edge Computing Rack

EDGE COMPUTING SERVER RACK COOL-RACK SILENT WITH 7kW COOLING CAPACITY 42 U 800 + 150x1200x2100 mm (WxDxH) Sound-insulated with high quality and flame retardant ...

### [Eaton unveils self-cooling rack innovation for edge computing](#)

Organizations across industries are increasingly incorporating edge computing into their IT operations, leading them to deploy single-rack micro data centers in edge ...



### [Eaton self-cooling rack enclosures brochure](#)

The SmartRack® 5.5 kW self-cooling server rack enables end users to deploy standardized MDC solutions to support edge computing needs in enterprises, manufacturing, government, ...



### [4 Essential Considerations When Buying Racks for Your Edge ...](#)



The external width of standard racks is 600 mm or 24 inches. But extra-wide racks have an external width of 750 mm or 30 inches, and they may or may not have extra depth. ...

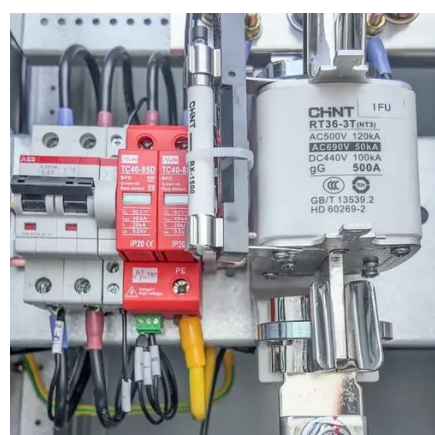


### [Comprehensive Guide to Server Rack Cooling](#)

In-rack cooling targets hotspots directly, especially in high-density racks. Together, these methods ensure consistent temperatures ...

### [Revolutionary IT Cooling](#)

EdgeCool brings data-center efficiencies down to the rack level and is the only split system designed for self-contained operation with any rack.



### [Rack or Cabinet Installation for the Edge 3400 and 3800](#)

To remove the platform, unscrew the rack-mounting screws and slide the platform forward. Four-post Installation Installing the Edge 3x00 in a four-post rack is optional. To use ...

### [How to Choose Racks for Edge Data Centers](#)



The market for edge data center infrastructure is experiencing explosive growth. However, power, cooling, and space constraints can ...



### Thermal Management for High-Density IT Server Rack Solutions

Introduction High-density IT server racks - including telecom installations, industrial control systems, and edge computing infrastructure - concentrate significant heat ...



### **AGS104L**

Flexible mounting options, including DIN-rail, wall-mount, and desktop installation, allow for easy deployment in control cabinets, equipment enclosures, or compact machinery. Designed for a ...



### EDGE 5 - Air Conditioned Server Rack - EDGE Computing

EDGE 5 Micro Data Centre is an air conditioned server rack that facilitates edge computing. In this digital age with more devices connecting to the internet, sending and receiving data, there ...



### How to Choose Racks for Edge Data Centers



We can help you choose server racks tailored to your specific needs and the environment in which your edge data center is located. ...



### [How Are Rack Batteries Revolutionizing Real-Time Data ...](#)

Q1: How quickly can rack batteries respond to power interruptions in edge computing? A1: Rack batteries provide near-instantaneous power backup, typically within milliseconds, ensuring no ...

### [EDGE 5 - Air Conditioned Server Rack - EDGE ...](#)

EDGE 5 is capable of cooling up to 2.5Kw, and will maintain the required internal cabinet temperature even when sited in a room ambient of ...



**1075KWHH ESS**



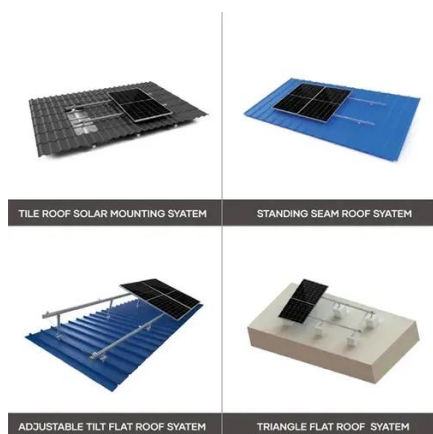
### [Eaton SmartRack 42U Extra-Deep Extra-Wide Heavy-Duty Rack ...](#)

42U heavy-duty extra-deep extra-wide rack enclosure houses, organizes, and secures heavy AI servers and other equipment used in edge and enterprise applications.

### [Server Rack Installation Guide for Efficient Data ...](#)



Explore expert server rack installation guides to optimize your data center for efficiency and scalability. Learn tips for seamless setup and management



### [Eaton SmartRack 42U Extra-Deep Extra-Wide ...](#)

42U heavy-duty extra-deep extra-wide rack enclosure houses, organizes, and secures heavy AI servers and other equipment used in edge and ...

### [How to Choose Racks for Edge Data Centers](#)

We can help you choose server racks tailored to your specific needs and the environment in which your edge data center is located. We'd welcome the opportunity to meet ...



### [Rack-Mounted Lithium Batteries: Customized ...](#)

Ultra compact design saves space. The 1U rack mounted lithium battery for edge computing uses laminated battery cells (3mm ...



### [Edge Computing Hardware - Installation Best ...](#)



Proper installation of edge computing hardware is crucial for successful operation, and this discussion explores key practices that must ...



#### [4 Essential Considerations When Buying Racks for ...](#)

The external width of standard racks is 600 mm or 24 inches. But extra-wide racks have an external width of 750 mm or 30 inches, and ...

#### [Comprehensive Guide to Installing Components in a Data Center Server Rack](#)

Proper installation of components in a data center server rack is crucial for optimal performance, efficient maintenance, and long-term reliability of your IT infrastructure. This guide provides ...



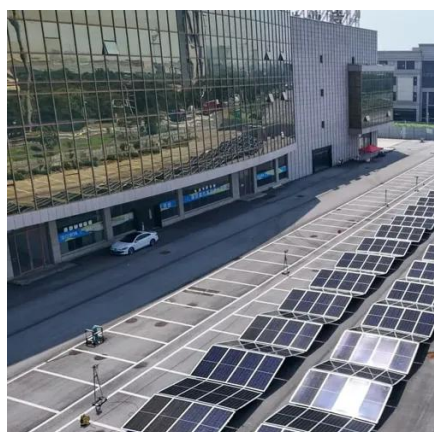
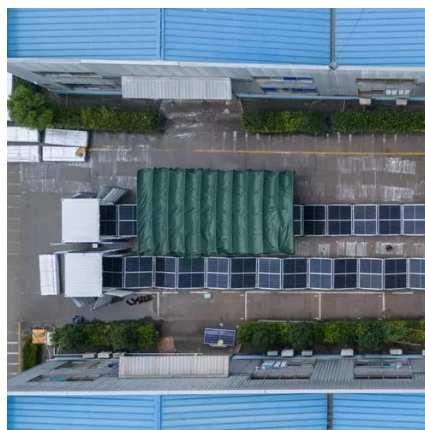
#### [Rack or Cabinet Installation for the Edge 3400 and 3800](#)

To configure your rack for installation, use the two-post rack mounting system that is provided. To complete this installation, supply four rack-mounting screws. To begin installation, separate ...

#### [Edge Data Center Solutions](#)



Maintain proper temperature control inside the rack with outdoor heat rejection. And with the option to mount the condenser on the roof of the rack, added flexibility is built in.



### [Comprehensive Guide to Server Rack Cooling](#)

Learn how server rack cooling prevents overheating, boosts performance, and ensures reliability with expert tips and advanced solutions.



## Contact Us

---

For inquiries, pricing, or partnerships:

<https://zawojcsolina.pl>

Phone: +48 22 173 6647

Email: [info@zawojcsolina.pl](mailto:info@zawojcsolina.pl)

Scan QR code for WhatsApp.

