



# What size inverter should i use with a 100ah solar energy storage cabinet lithium battery





## Overview

---

In general, for a 100ah battery, a 1000 watt pure sine wave inverter will be a good suit. It provides enough power to operate a wide range of household or camping appliances. Now, let's figure out how to choose the right inverter size for a 100ah battery, based on what you need.

In general, for a 100ah battery, a 1000 watt pure sine wave inverter will be a good suit. It provides enough power to operate a wide range of household or camping appliances. Now, let's figure out how to choose the right inverter size for a 100ah battery, based on what you need.

Step to calculate inverter size for 100ah battery: Calculate the total load you intend to use and add 20% for a safety margin. Select the inverter type: Choose a pure sine wave inverter for superior performance and protect your appliances from potential damage. Additional tips: Using appropriately.

For higher power requirements, add more batteries or opt for a 3000W inverter to meet startup currents effectively. The power output of an inverter is usually measured in watts. To calculate the wattage, use the formula:  $\text{Watts} = \text{Volts} \times \text{Amps}$ . For a standard 12V battery, a 100Ah capacity translates.

A 100Ah lithium battery can typically support an inverter up to 1,200W for 1 hour, assuming a 12V system. Actual runtime depends on load wattage and battery voltage. For example, a 600W load would run ~2 hours at 12V, factoring in 90% inverter efficiency. Always check your battery's voltage.

In this video, I break down everything you need to know about inverter sizing, battery compatibility, and power runtime — in simple, practical terms. We'll calculate how many watts (W) or kilowatts (kW) your 12V, 24V, and 48V batteries can safely handle, whether they're lithium or lead-acid. You'll.

A 100Ah battery typically supports an inverter size up to about 1000 watts for standard applications, balancing efficient runtime and battery health. Selecting the right inverter size depends on battery voltage, power consumption of connected devices, inverter efficiency, and safe operating limits.

This article reviews five top inverters and battery combos optimized for 100Ah



batteries, considering power output, battery type compatibility, safety features, and monitoring capabilities. Below is a summary table of these leading products: Check Price on Amazon This Renogy solar starter kit. Can a 100Ah battery be a 24V inverter?

Most 100Ah batteries are 12V, but some systems may use 24V. Your inverter must match your battery voltage (e.g., 12V inverter for a 12V battery). 2. Power Rating of the Inverter (Wattage) Inverters are rated by their continuous power output in watts (W). The right inverter size depends on how much power your appliances draw.

How do I match my inverter with a 100Ah battery?

To match your inverter with a 100Ah battery, several factors must be considered. Inverters are rated based on continuous power and surge power. Continuous power is the amount of power the inverter can supply continuously without overheating or damage. Surge power refers to the short-term power needed to start appliances with high startup currents.

Can I use a 2000 watt inverter with a 100 watt battery?

Yes, you can use a 2000 watt inverter with a 100ah battery. But if you use 2000 watts from your 12v 100ah battery, it will use up the battery faster and over time, it will also shorten the battery's life. Can I use a 1500W inverter with a 100Ah battery?

Yes, you can use a 1500 watt inverter with a 100ah battery.

How to choose an inverter for a 100 Ah battery?

When picking an inverter for your 100ah battery, it's best to choose a pure sine wave inverter. This type of inverter gives a steady power output, similar to what you get from the electricity grid. This clean power is safer for your appliances and makes them work their best.



## What size inverter should i use with a 100ah solar energy storage cabinet



### [What Size Inverter Can I Run Off a 100Ah Battery? Maximize ...](#)

Supporting solar energy systems with a 100Ah battery and inverter is popular among off-grid users. This configuration allows energy storage during sunlight hours, which ...

### [Solar Battery Size Guide: kWh, Inverter & Runtime](#)

How Many kWh Of Solar Battery Do I Need For My Home? 1. Start With Your Load Profile. 2. Critical Vs Full-Home. 3. From Loads To Solar Battery Size. 4. What Self ...



### [Integrated Energy Storage Cabinet](#)

The SafeCubeA100A50PT Integrated Energy Storage Cabinet is equipped with 3.2V/100Ah lithium iron phosphate batteries, supporting a maximum energy storage capacity of 102kWh. ...

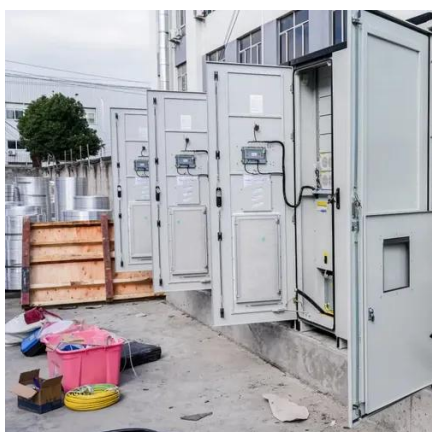
### [Can an Inverter Be Too Big for Your Battery System?](#)

How to Calculate the Right Inverter Size for Your Battery Match the inverter's continuous wattage rating to the battery's discharge capacity. For a 12V 200Ah battery (2.4kWh), a 2000W inverter ...



### [Solar Battery Bank Calculator for Off-Grid](#)

Use this battery bank size calculator to help you buy the right battery bank and ensure you get years of life for your solar panel kit system.



### [What size inverter can I run off a 100Ah lithium battery?](#)

What size inverter can I run off a 100Ah lithium battery? A 100Ah lithium battery can typically support an inverter up to 1,200W for 1 hour, assuming a 12V system. Actual runtime depends ...



### [Best Inverters Compatible With 100Ah Battery for ...](#)

Choosing the best inverter to pair with a 100Ah battery requires weighing several factors to ensure efficiency, longevity, and ...



### [Best Inverters Compatible With 100Ah Battery for RVs, Solar, and ...](#)



Choosing the best inverter to pair with a 100Ah battery requires weighing several factors to ensure efficiency, longevity, and safety in your power system. Not all inverters are ...



### [Lithium battery bank size for 3500 Watts , DIY Solar Power Forum](#)

$3500W / 51.2V = 68A$  Thus as few as 1 100Ah battery can handle the charge current. Basically, it's up to you. 1) the amount of PV you have determines how much energy ...

### [How to Determine What Size Inverter You Can Run Off a 100Ah Battery](#)

Determining the appropriate size of an inverter that can be run off a 100Ah battery involves understanding both the power output of the inverter and the energy capacity of the battery. A ...



### [What size inverter can I run off a 100Ah lithium battery?](#)

A 100Ah lithium battery can typically support an inverter up to 1,200W for 1 hour, assuming a 12V system. Actual runtime depends on load wattage and battery voltage. For example, a 600W ...



### [Everything You Need to Know About 12V 100Ah Lithium Battery](#)



12V 100Ah lithium batteries are efficient, versatile, and ideal for RVs, marine, and solar use. Learn about their benefits and applications.



### [What Size Inverter Can I Run Off a 100Ah Battery? Maximize ...](#)

What Size Inverter Is Safe to Use with a 100Ah Battery? The safe inverter size to use with a 100Ah battery is typically between 300W to 1200W, depending on your power ...

### [Selecting The Right Cable Size For Your Battery ...](#)

Selecting the proper DC cable size for a solar powered Off-grid system involves determining the maximum current flow (amps) from ...



### [Sizing the Right Inverter for 100ah Battery](#)

In this guide, I will walk you through the process of sizing the right inverter for a 100ah battery along with an inverter size chart.



### [What Size Inverter Can I Run Off a 100Ah Battery? A...](#)



This capacity influences how long an inverter can run appliances before needing a recharge. However, battery capacity alone doesn't dictate inverter size. The inverter converts ...

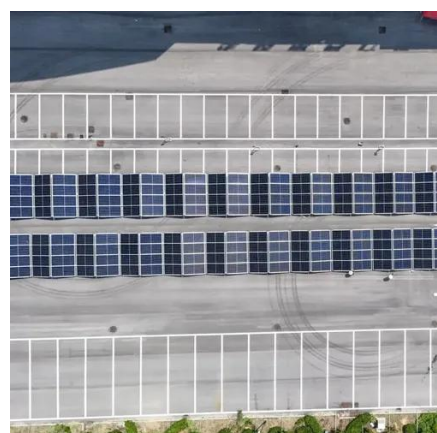
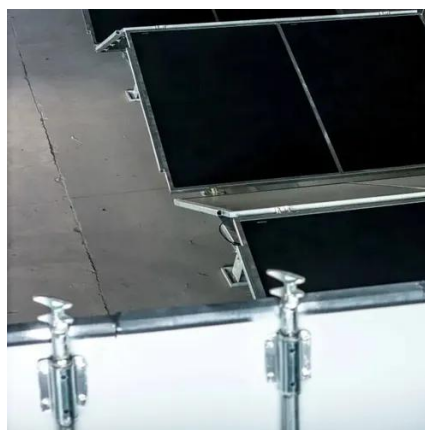


### [What Size Inverter for 100Ah Battery? - MWXNE POWER](#)

In this guide, we'll walk you through what size inverter works best with a 100Ah battery, how long your battery will last, and how to size your inverter-and-battery combo for ...

### [Lithium \(LiFePO4\) Battery Runtime Calculator - Dot Watts®](#)

Calculator assumption Lithium battery discharge efficiency: 95% (Source) Inverter efficiency: 90% how to use Lithium Battery runtime calculator? 1- Enter the battery capacity ...



### [The Only Battery Size Chart You'll Ever Need](#)

This article will help you understand the different battery sizes and provide you with a complete battery size chart.

### [What Inverter Size is Best for a 100Ah Battery?](#)



A 12V 100Ah battery can reasonably power an inverter up to 1000W-1200W for short periods. For continuous loads, 500W-800W is more efficient and battery-friendly.



### [What Size Inverter Do I Need for a 100Ah Battery?](#)

For example, a 12V 100Ah battery has 1200Wh capacity. Considering inverter efficiency (usually 80-95%) and power factors, a 1000W inverter is suitable to avoid ...

### [What Size Inverter for 100Ah Battery? , 12V, 24V, 48V Battery Inverter](#)

In this video, I break down everything you need to know about inverter sizing, battery compatibility, and power runtime -- in simple, practical terms. We'll calculate how ...



### [What Size Inverter for 100Ah Battery? - MWXNE POWER](#)

The actual usable energy depends on: Battery voltage (usually 12V, sometimes 24V) Depth of discharge (DoD) - how much of the battery you can safely use Battery type ...



## Contact Us

---

For inquiries, pricing, or partnerships:

<https://zawojcsolina.pl>

Phone: +48 22 173 6647

Email: [info@zawojcsolina.pl](mailto:info@zawojcsolina.pl)

Scan QR code for WhatsApp.

