



What size inverter should i use for a 160a solar energy storage cabinet lithium battery





Overview

Generally, it's recommended to size the inverter to 80-100% of the DC system's rated capacity. Before determine the inverter size, the most important thing is to calculate your average daily power consumption (kWh) and calculate your solar panel array size to match your power.

Generally, it's recommended to size the inverter to 80-100% of the DC system's rated capacity. Before determine the inverter size, the most important thing is to calculate your average daily power consumption (kWh) and calculate your solar panel array size to match your power.

A properly sized solar inverter typically lasts 10-15 years, though premium or microinverter units can reach 20-25 years with good maintenance. Think of inverter sizing like choosing the right-sized engine for your car. Too small, and you'll struggle on hills. Too large, and you're paying for power.

Choosing the right solar inverter size is critical—and one of the most common questions: what solar inverter size do I need?

Whether you are installing a rooftop system in California, powering a remote cabin in Alberta, or sizing for a community center in Rajasthan, getting it right means.

Right-sizing your inverter is a high-impact decision. It shapes upfront cost, long-term yield, battery performance, and grid compliance. This pillar piece gives you a complete, practical path to size an inverter, read efficiency curves, reduce clipping, and match storage—grounded in field.

Choosing the correct inverter and battery size is crucial for every microgrid system. Most people, especially beginners, make mistakes here. This leads to trouble later. Either they have to live with limitations on using electronics, or they waste a lot of energy. At LuxpowerTek, we have developed.

You'll learn how to calculate the right battery size, ensure inverter compatibility, and optimize performance with smart management tools. The first step in battery sizing is to assess your household's daily energy consumption. - Check your monthly electricity bill for average kWh usage per day -.



Choosing the right solar inverter is critical to getting the most out of your photovoltaic (PV) system. Many DIY installers and homeowners ask, “ what size solar inverter do I need?

” This guide will walk you through an easy, step-by-step process to accurately size your inverter, avoid common. How big should a solar inverter be?

Generally, it's recommended to size the inverter to 80-100% of the DC system's rated capacity. Before determine the inverter size, the most important thing is to calculate your average daily power consumption (kWh) and calculate your solar panel array size to match your power consumption. You could follow our to make this estimation.

Why is the solar inverter and Battery sizing calculator important?

Our Solar Inverter and Battery Sizing Calculator provides a simple and user-friendly solution. It is much easier to use and more convenient. Here, you can make a list of possible setups. Why is this sizing calculation essential?

First, you can use your electronic gadgets in your home with confidence.

Can you use a battery with a Growatt solar inverter?

By leveraging Growatt’s hybrid inverters with ARK battery systems and AI-powered features, homeowners can achieve maximum efficiency, savings, and energy independence. Learn how to size and pair a battery with your solar inverter in 2025. Discover key ratios, examples, and Growatt solutions for optimal solar + storage system design.

How long does a solar inverter last?

The inverter handles this crucial conversion, and its size directly impacts your system's efficiency and safety. A properly sized solar inverter typically lasts 10-15 years, though premium or microinverter units can reach 20-25 years with good maintenance. Think of inverter sizing like choosing the right-sized engine for your car.



What size inverter should i use for a 160a solar energy storage cabinet



[What Size Fuse Between Battery And Inverter? RenewableWise](#)

Do I need a fuse between battery and inverter? The short answer is yes, you do need a fuse (or a circuit breaker) between your battery bank and inverter. If an overcurrent ...

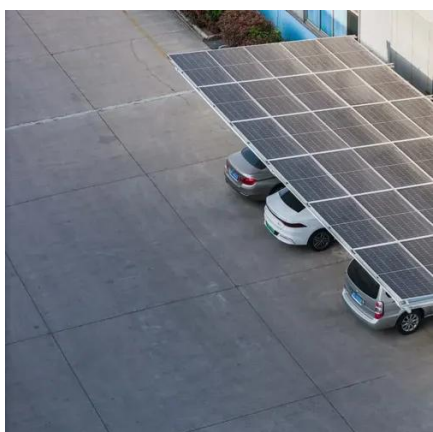
[What size inverter do you need for a 100ah battery?](#)

After reading this, you'll know the steps that you should take in order to properly size the inverter that you need. What size inverter for a 100Ah battery? For appliances that ...



[Determining the Solar and Inverter Size Needed to ...](#)

As a general rule of thumb, the size of your inverter should be similar to the DC rating of your solar panel system.



[What Size Solar Inverter Do I Need? A Quick Sizing Guide](#)

This guide will walk you through an easy, step-by-step process to accurately size your inverter, avoid common pitfalls, and highlight how our Lefor Solar Inverter Series can fit your specific ...



[How to Determine the Right Solar Inverter Size for Your System](#)

Learn how to choose the right solar inverter size for maximum efficiency, energy savings, and system performance. Avoid common pitfalls and boost ROI.



[Solar Inverter & Battery Sizing Calculator](#)

Choosing the correct inverter and battery size is crucial for every microgrid system. Our Solar Inverter and Battery Sizing Calculator provides a simple and user-friendly solution.



[How to Choose the Right Size Solar Inverter: Step-by-Step with ...](#)

This guide walks you through calculating inverter size based on panel capacity, power usage, and safety margins. We use real examples from installations in Texas and ...



[15kW / 35kWh Hybrid Solar System Integrated Energy Storage Cabinet](#)



This fully integrated solar energy solution comes pre-configured for seamless operation, including factory-set communication between the battery and inverter and pre-assembled power ...



[Battery and Inverter Sizing Guide 2025: How to Match Solar ...](#)

Learn how to size and pair a battery with your solar inverter in 2025. Discover key ratios, examples, and Growatt solutions for optimal solar + storage system design.



[Choosing and Sizing Batteries, Charge Controllers and Inverters ...](#)

Solar Panels Choosing and Sizing Batteries, Charge Controllers and Inverters for Your Off-Grid Solar Energy System Choosing and Sizing Batteries, Charge Controllers and Inverters for ...



[How to Choose the Right Size Solar Inverter: Step ...](#)

This guide walks you through calculating inverter size based on panel capacity, power usage, and safety margins. We use real ...



[Solar Inverter Sizing Guide for Maximum Efficiency .Mingch](#)



This article explains how to calculate your inverter size, what affects it, and how to avoid costly mistakes, especially when using high-efficiency solutions like MINGCH Electrical's ...



[Inverter Size Calculator - self2solar](#)

Choosing the right inverter size is essential for a reliable and efficient solar power system. Our Inverter Size Calculator simplifies this ...



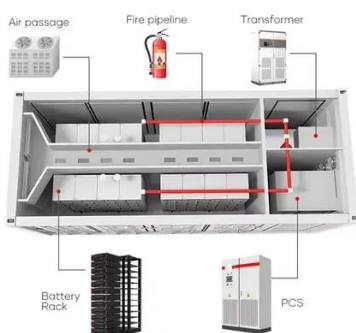
[Solar inverter size: Calculate the right size for your inverter](#)

Your inverter should match your solar and battery needs. A properly sized inverter ensures efficient charging, discharging, and home power supply.



[Outdoor Battery Box Enclosures and Cabinets](#)

AZE's outdoor battery racks and battery enclosures keep your batteries safe from weather, vermin and damage, we have enclosures for wall or floor ...

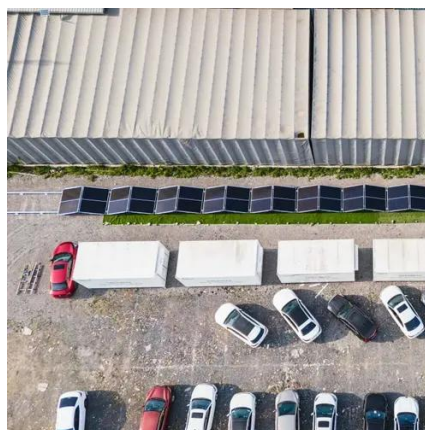


[Solar Inverter Sizing Guide for Maximum Efficiency](#)

...

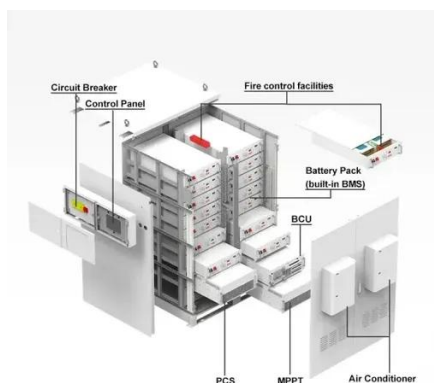


This article explains how to calculate your inverter size, what affects it, and how to avoid costly mistakes, especially when using high ...



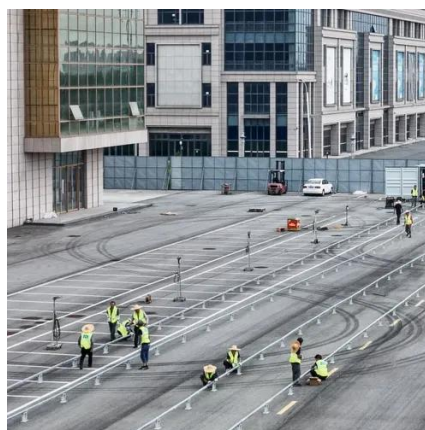
[Solar Inverter Sizing Guide: How to Size Your Inverter](#)

Learn how to properly size your solar inverter with our complete guide. Discover the optimal DC-to-AC ratio and avoid costly sizing mistakes.



[Choosing the Right Battery Size For Your Solar System , SolarEdge](#)

A well-sized battery allows you to store excess solar energy generated during the day for use at night or during power outages, ensuring a reliable and continuous power supply. ...



[How Do I Match My Battery Size to My Inverter?](#)

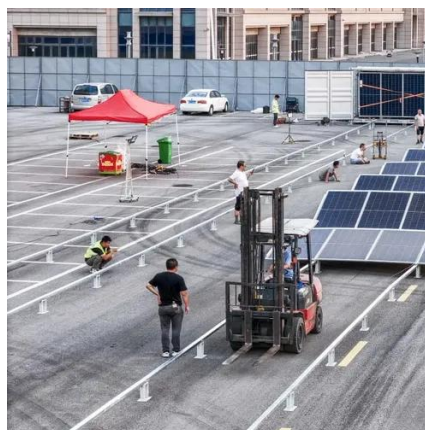
Matching your battery size to your inverter is essential for ensuring efficient power usage and preventing system overloads. A well-sized battery will provide adequate energy for your ...



[What Size Solar Inverter Do I Need? A Quick ...](#)



This guide will walk you through an easy, step-by-step process to accurately size your inverter, avoid common pitfalls, and highlight how our Lefor ...

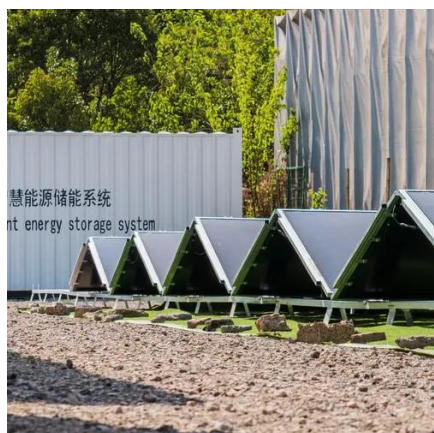


[Inverter Sizing and Efficiency](#)

This pillar piece gives you a complete, practical path to size an inverter, read efficiency curves, reduce clipping, and match ...

[Inverter Size Calculator - self2solar](#)

Choosing the right inverter size is essential for a reliable and efficient solar power system. Our Inverter Size Calculator simplifies this task by accurately estimating the ...



[DC breaker sizing , DIY Solar Power Forum](#)

I'm trying to size and source the necessary DC breakers/fuses for my inverter to battery bank. The inverter is rated for 6500 watt, with a ...

[How Many Batteries & Solar Panels for 10KW ...](#)



With the inverter size determined, the steps to match components to the 10kW inverter for optimal system performance will be ...





Contact Us

For inquiries, pricing, or partnerships:

<https://zawojcsolina.pl>

Phone: +48 22 173 6647

Email: info@zawojcsolina.pl

Scan QR code for WhatsApp.

