



# What does bms battery soh mean





## Overview

---

State of Health (SOH) is a quantitative measure that assesses how well a battery performs compared to its original, brand - new condition. Expressed as a percentage (with 100% representing a fully healthy, new battery), SOH tracks the gradual degradation of a battery over time.

State of Health (SOH) is a quantitative measure that assesses how well a battery performs compared to its original, brand - new condition. Expressed as a percentage (with 100% representing a fully healthy, new battery), SOH tracks the gradual degradation of a battery over time.

For anyone working with or relying on battery - powered devices—whether you're an EV owner, a renewable energy enthusiast, or a tech professional—understanding SOH is key to maximizing battery life, ensuring safety, and optimizing performance. This guide will break down everything you need to know.

What are SoC (state of charge) and SoH (state of health) for a battery?

Understanding and monitoring cells' states, at a particular point in time, is often needed in battery development in order to optimize their use. You may want to better understand the State-of-Charge  $\{ (SoC) \}$  and.

The main functions of Battery Management System (BMS) are battery state estimation, battery equalization, charge/discharge control, thermal management, communication diagnosis and safety protection, etc., as shown in the figure below: Among them, the state estimation function mainly includes the.

The major task of a battery management system (BMS) is to provide security and longevity of the battery, while also optimizing battery performance. This can be done through continuous monitoring and control of the battery's state-of-charge (SOC) and state-of-health (SOH). For a battery management.

State of Charge (SOC) and State of Health (SOH) are critical metrics in battery management systems (BMS) that help monitor the performance and longevity of batteries. SOC indicates the current charge level, while SOH reflects the overall condition and capacity of the battery. What do SOC and SOH.



In the battery industry, two terms are often mentioned: SOC (State of Charge) and SOH (State of Health). They are critical parameters in a Battery Management System (BMS) and play an important role in evaluating battery usage and lifespan. This article explains what SOC and SOH mean, their.



## What does bms battery soh mean



### [What are SOC and SOH of a battery, how to measure them?](#)

Battery SoC/State of Charge describes the remaining electricity available in the cell. SoH is the difference between used/fresh batteries.

### [The Importance of State of Charge \(SOC\) and...](#)

Discover the crucial role of State of Charge (SOC) and State of Health (SOH) in Battery Management Systems (BMS) and how they contribute to the ...



### [Battery Management Systems \(BMS\): A Complete Guide](#)

A Battery Management System (BMS) is essential for ensuring the safe and efficient operation of battery-powered systems. From real-time monitoring and cell balancing to thermal ...

### [Battery Management System \(BMS\) Detailed Explanation: ...](#)

Battery Management System (BMS) is the "intelligent manager" of modern battery packs, widely used in fields such as electric vehicles, energy storage stations, and consumer ...



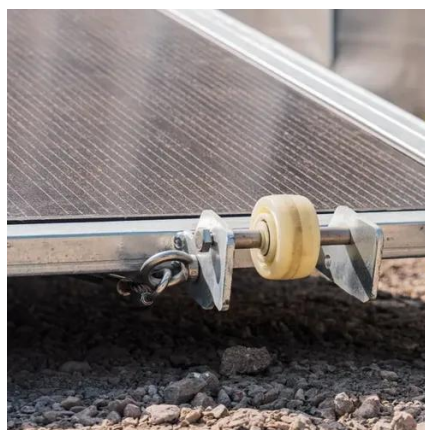
### [Mastering Battery SOH: The Key to Long-Lasting ...](#)

Learn what Battery SOH means, how it's measured, what factors affect it, and why understanding Battery State of Health is key to ...



### [The Importance of State of Charge \(SOC\) and State of Health \(SOH\)...](#)

Discover the crucial role of State of Charge (SOC) and State of Health (SOH) in Battery Management Systems (BMS) and how they contribute to the efficient operation of batteries.



### [Battery SOC and SOH Explained -State of Charge ...](#)

In the battery industry, two terms are often mentioned: SOC (State of Charge) and SOH (State of Health). They are critical parameters in a ...



### [Battery management system: SoC and SoH Estimation Solutions](#)



The major task of a battery management system (BMS) is to provide security and longevity of the battery, while also optimizing battery performance. This can be done through ...



### [Understanding Battery States: State of Charge \(SoC\) and State ...](#)

Discover the critical concepts of State of Charge (SoC) and State of Health (SoH) in battery technology. Learn how these parameters impact performance, longevity, and safety.

### [What is a Battery Management System \(BMS\)?](#)

A Battery Management System (BMS) safeguards lithium-ion batteries by monitoring voltage, current, and temperature, preventing ...



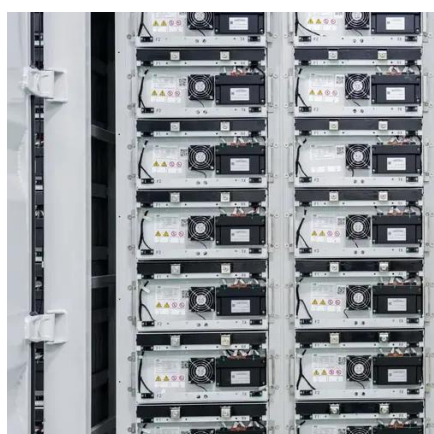
### [What Are SOC and SOH in Battery Management ...](#)

State of Charge (SOC) and State of Health (SOH) are critical metrics in battery management systems (BMS) that help monitor the ...

### [What is a Battery Management System \(BMS\)?](#)



A Battery Management System (BMS) is a piece of hardware that measures the voltage, current, and temperature of each cell in the ...

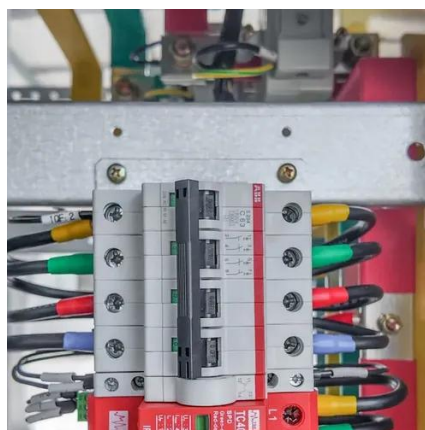


### Differences and Relationships of 3 Battery State: ...

The BMS SOH is expressed as a percentage, where 100% represents a battery in perfect health, and values below 100% indicate a ...

### What Are SOC and SOH in Battery Management ...

What do SOC and SOH mean in battery management systems? State of Charge (SOC) refers to the current charge level of a ...



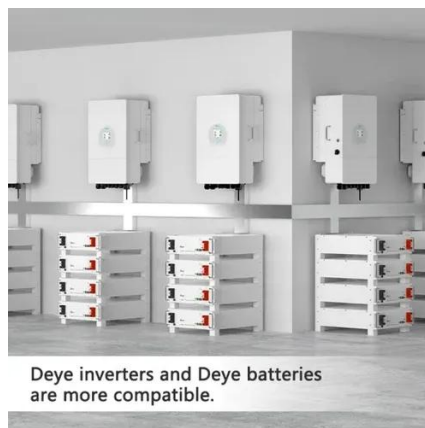
### The difference between battery SOC, SOH, SOE ...

The difference between battery SOC, SOH, SOE and DOD 1. Battery SOC The state of charge of the battery refers to the available state of the ...

### Understanding State of Charge (SOC) and State of Health (SOH) ...



Discover the importance of State of Charge (SOC) and State of Health (SOH) in battery systems. Learn how these key metrics enhance battery performance, safety, and ...



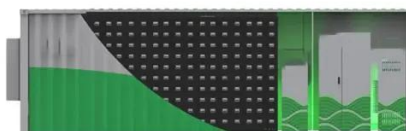
### [Battery SoC vs SoH: 2025 Guide to Metrics and ...](#)

Battery State of Charge (SoC) is the percentage of remaining energy in a battery, like a fuel gauge, while Battery State of Health (SoH) ...



### [Mastering Battery SOH: The Key to Long-Lasting and Reliable ...](#)

Learn what Battery SOH means, how it's measured, what factors affect it, and why understanding Battery State of Health is key to maximizing battery lifespan.



### [What Is SOH in BMS? A Complete Guide to ...](#)

State of Health (SOH) is a quantitative measure that assesses how well a battery performs compared to its original, brand - ...

### [Battery SOC and SOH Explained -State of Charge & Health for ...](#)



In the battery industry, two terms are often mentioned: SOC (State of Charge) and SOH (State of Health). They are critical parameters in a Battery Management System (BMS) and play an ...



### [Battery SoC vs SoH: 2025 Guide to Metrics and Maintenance](#)

Battery State of Charge (SoC) is the percentage of remaining energy in a battery, like a fuel gauge, while Battery State of Health (SoH) measures how much capacity and ...

### [The Ultimate Guide to SoH in BMS](#)

The State of Health (SoH) is a critical parameter in Battery Management Systems (BMS) that determines the overall performance, reliability, and lifespan of a battery.



### **TYVA Battery Academy**

The first parameter is the battery's coulometric statement in charge and discharge. Thus, we will permanently measure the electrons moving ...

### [What Are SOC and SOH in Battery Management Systems?](#)



State of Charge (SOC) and State of Health (SOH) are critical metrics in battery management systems (BMS) that help monitor the performance and longevity of batteries. ...



### [What is Battery SOC \(State of Charge\) and SOH ...](#)

SOC and SOH are two important parameters of a battery. They are related to the performance and state of the battery. Simply put, ...

### [Calculation of SOC & SOH for EV Battery , What ...](#)

Handling these tasks of constant and consistent evaluation of battery is the battery management system (BMS) that is always ...



### [What are SOC and SOH of a battery, how to measure them?](#)

State of Health (SOH) Estimation: SOH reflects the ratio of a battery's current capacity to its initial capacity and is used to assess the ...



### [What does SOC & SOH & SOP mean for Battery?](#)



State of Health (SOH) Estimation: SOH reflects the ratio of a battery's current capacity to its initial capacity and is used to assess the degree of aging and performance ...



[What Is SOH in BMS? A Complete Guide to Battery State of ...](#)

State of Health (SOH) is a quantitative measure that assesses how well a battery performs compared to its original, brand - new condition. Expressed as a percentage (with ...



## Contact Us

---

For inquiries, pricing, or partnerships:

<https://zawojcsolina.pl>

Phone: +48 22 173 6647

Email: [info@zawojcsolina.pl](mailto:info@zawojcsolina.pl)

Scan QR code for WhatsApp.

