



# What does battery cabinet a3 mean





## Overview

---

Q3: Can a battery storage system be expanded after installation?

A3: Yes, provided the original architecture supports modularity. Many modern systems use a modular rack or cabinet design that allows users to add more battery modules later.

Q3: Can a battery storage system be expanded after installation?

A3: Yes, provided the original architecture supports modularity. Many modern systems use a modular rack or cabinet design that allows users to add more battery modules later.

Do NOT attempt to construct this battery cabinet if you are unfamiliar with the risks involved. Never leave wires floating. Always connect to a terminal or insulate. Use insulated tools. Do not use a spanner longer than the distance between terminals. Work on only one battery at a time. Batteries.

A robust battery storage system design is the foundation for stabilizing grids, lowering energy costs for businesses, and ensuring power reliability across various scenarios. Engineers and project developers face complex challenges when configuring these systems. It is not simply about connecting.

The AGM car battery isn't just a source of power to start your engine — it supports your car's electronic systems. Installing the wrong battery size can lead to: That's why it's critical to understand how car battery sizing works before replacing your battery. So in this blog, I will show Car.

When purchasing a battery, you will see a series of numbers and letters in the name. These numbers and letters are the BCI group size of the battery. BCI stands for Battery Council International. This is a trade association that includes manufacturers, recyclers, distributor, and retailer.

A battery size chart is an essential tool that lists various battery group sizes, categorized by the Battery Council International, or BCI, along with critical specifications like dimensions, Cold Cranking Amps (CCA), and Reserve Capacity (RC). These charts are invaluable for identifying which.



Car batteries come in various sizes, each designated by a specific group number assigned by the Battery Council International (BCI). These group numbers help standardize car batteries by their physical dimensions, ensuring compatibility across different vehicle makes and models. Selecting the. What does a battery group size mean?

The numbers and letters in a battery group size represent the physical dimensions and terminal placement of the battery. They ensure it's compatible with your vehicle's make and model. How do I know if a battery will fit my vehicle based on the size chart?

What is a group size number on a car battery?

The group size number on a car battery is a standardized code that indicates the physical dimensions of the battery. The group size number can be found on the label of the battery and is usually a combination of letters and numbers.

What is a battery size chart?

A battery size chart is an essential tool that lists various battery group sizes, categorized by the Battery Council International, or BCI, along with critical specifications like dimensions, Cold Cranking Amps (CCA), and Reserve Capacity (RC). These charts are invaluable for identifying which battery fits your vehicle's requirements.

What does the number 23 mean on a car battery?

The letter D represents the battery's group size, while the number 23 indicates the battery's overall dimensions. The letter L represents the battery's polarity and venting requirements. How does one decipher the date code on a car battery?



## What does battery cabinet a3 mean

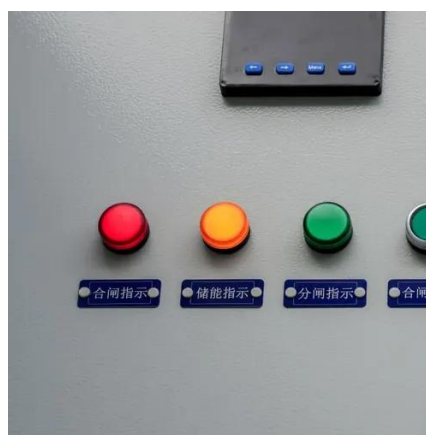


### What Does A3 Mean?

What Does A3 Mean From a Girl? When a girl uses the term a3, it typically means the same thing as when a guy uses it. It signifies ...

### [Understanding Battery Ah: A Guide to Amp-Hour Ratings](#)

What Does Ah or Ampere-hour Mean on A Battery? Ah stands for "ampere-hour" and is a crucial measure of a battery's capacity. Simply put, it tells you how much electrical charge a battery ...



### [Unveiling A3: The Universal Paper Size Explained](#)

A3. It's a term often encountered in printing, design, and various professional fields. But what exactly does A3 mean? Simply put, A3 refers to a standardized paper size, widely used across ...

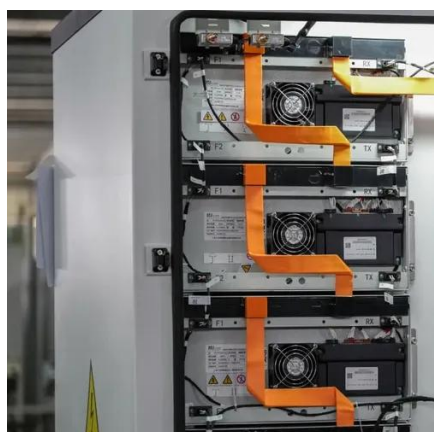
### [50+ Audi A3 Dashboard Warning Lights and ...](#)

In this content, I will share with you the meanings of Audi A3 warning lights and Audi A3 dashboard symbols in detail. I have prepared ...



### [2022 Audi A3 Indicator Lights Quick Guide](#)

Understand the 2022 Audi A3 indicator lights with our quick guide. Learn what each light means to ensure safe and informed driving



### [Do You Speak Auto Battery?](#)

This is the first and most important factor in determining if a given battery is right for your vehicle since the battery tray or ...



### **What does A3 mean?**

Definition of A3 in the Definitions dictionary. Meaning of A3. What does A3 mean? Information and translations of A3 in the most comprehensive dictionary definitions resource on the web.



### [Battery Group Size: What It Means and Why It ...](#)



What does battery group size mean in simple terms? Battery group size is a classification set by the Battery Council International (BCI) ...



### [What does energy storage cabinet load mean?](#)

With ongoing research and development, the capacity for energy storage cabinets will likely expand dramatically, supported by ...

### [What Do Numbers On A Car Battery Mean?](#)

Discover what the numbers on a car battery mean, including voltage, cold cranking amps (CCA), and reserve capacity for better ...



### [Car Battery Size Chart Guide \(2025\): Find the ...](#)

Specifically, it's the number of amps a battery can supply at 0°F (-18°C) for 30 seconds while maintaining a minimum voltage of 7.2 ...

### [Battery Size Chart Guide](#)



These numbers indicate the physical dimensions and terminal placements of the battery, ensuring you select a battery that fits your vehicle's battery tray and cable connections.

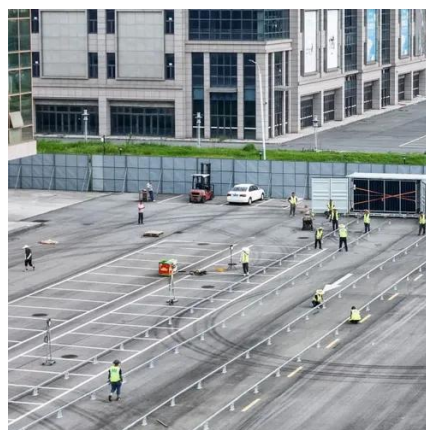


### [The Ultimate Guide to Lithium-Ion Battery Storage Cabinets](#)

Discover the importance of lithium-ion battery storage cabinets for safe battery storage and charging. Learn best practices, key features, and how to choose the right battery storage ...

### [A3 BATTERY CABINET ASSEMBLY](#)

A3 BATTERY CABINET ASSEMBLY ? This product uses high capacity batteries that carry the potential for injury and fire risk if short circuited. High terminal voltages may also exist. Do NOT ...



### [What Does Ah Mean on a Battery? Amp Hours ...](#)

Understanding Amp Hours (Ah) is the difference between a battery that lasts all day and one that dies when you need it most. ...

### [Understanding Battery Sizes \(and Battery Group Size Charts\)](#)



The first step in buying a new battery is to check a battery group size chart to determine which battery will fit in your vehicle. In addition to battery sizes, the chart will also ...



### [Do You Speak Auto Battery?](#)

This is the first and most important factor in determining if a given battery is right for your vehicle since the battery tray or compartment in the vehicle was designed around a ...

### [What Do Numbers On A Car Battery Mean?](#)

Discover what the numbers on a car battery mean, including voltage, cold cranking amps (CCA), and reserve capacity for better performance.



### [What Do the Numbers on a Battery Mean: Decoding Automotive ...](#)

These numbers aren't just random figures; they're critical indicators of the battery's specifications and how it's going to perform under the hood of your car. Understanding the ...

### [Battery Group Sizes and Cross Reference Chart with pictures](#)



The easiest way to find out what battery group you need is to measure your old battery or your car battery tray and find the size that you've got in our table above.



### [Battery Group Sizes and Cross Reference Chart with pictures](#)

What Is Battery Group Size? Choosing The Right Battery  
BCI Battery Group Size Chart  
How to Buy The Right Size Car Battery  
Common Battery Sizes by Vehicle Type  
Battery FAQ  
By now, you should have a good understanding of battery size groups and what they mean. However, there are many other considerations when choosing the correct battery for your vehicle, maintaining it, and many other relevant topics. Here are some of the most common questions that we get about batteries. See more on [batterygroupexpert](#)  
AutoZone

## **Battery Size Chart Guide - AutoZone**

These numbers indicate the physical dimensions and terminal placements of the battery, ensuring you select a battery that fits your vehicle's battery ...

### [Battery Storage System Design: Key Principles for Efficient ...](#)

Q3: Can a battery storage system be expanded after installation?  
A3: Yes, provided the original architecture supports modularity. Many modern systems use a modular rack or ...





## [What Does PCS Mean in the C& I Battery Energy ...](#)

What Does PCS Mean in the C& I Battery Energy Storage Systems Table of Contents Investing in a Battery Energy Storage System ...



## [Car Battery Size Chart Guide \(2025\): Find the Right Group Size ...](#)

Specifically, it's the number of amps a battery can supply at 0°F (-18°C) for 30 seconds while maintaining a minimum voltage of 7.2 volts for a 12V battery. A higher CCA ...





## Contact Us

---

For inquiries, pricing, or partnerships:

<https://zawojcsolina.pl>

Phone: +48 22 173 6647

Email: [info@zawojcsolina.pl](mailto:info@zawojcsolina.pl)

Scan QR code for WhatsApp.

