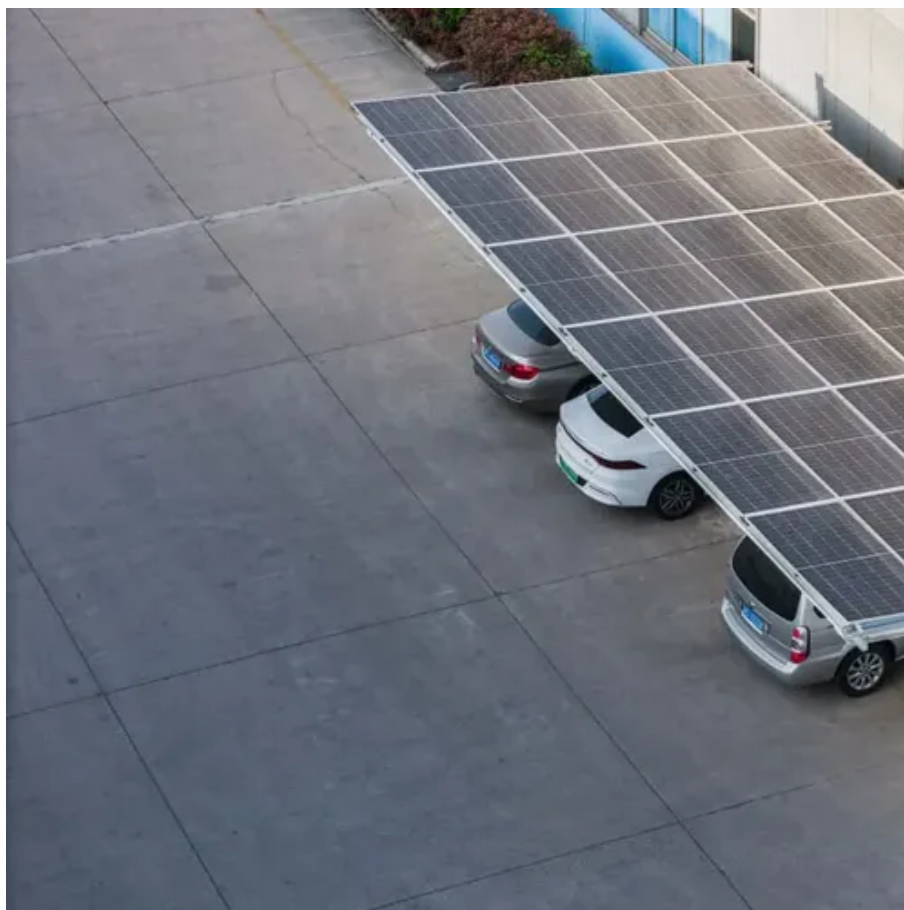




The earliest grid energy storage power station northwest of reykjavik





Overview

The plant is located at Hengill, approximately 11km away from the existing Nesjavellir geothermal power station in southwest Iceland. The plant was commissioned in five phases, from 2006 to 2011 and is owned and operated by Orkuveita Reykjavíkur.

The plant is located at Hengill, approximately 11km away from the existing Nesjavellir geothermal power station in southwest Iceland. The plant was commissioned in five phases, from 2006 to 2011 and is owned and operated by Orkuveita Reykjavíkur.

The Hellisheiði Power Station (Icelandic: Hellisheiðarvirkjun, Icelandic pronunciation: [ˈhɛtlɪs,hei:ðar,vɪrcʏn]) is the eighth-largest geothermal power station in the world and largest in Iceland. [1] The facility is located in Hengill, southwest Iceland, 11 km (7 mi) from the Nesjavellir.

Hellisheiðavirkjun, also known as the Hellisheidi Geothermal Power Plant, is one of the largest geothermal power plants in the world. Located approximately 25 kilometers (15.5 miles) east of Reykjavik, Iceland, this power plant is a shining example of Iceland's commitment to renewable energy and.

Did you know that Hellisheiði is the world's eighth geothermal power station and the largest in Iceland?

Sustainability is at the core of this 13,000-square meters state-of-the-art facility. Continue reading to find out everything you need to know about this geothermal power plant. Where Is.

The operation of the Reykjavik Electricity Authority began formally in 1921, when a hydroelectric power station was inaugurated on the Ellida river. The distribution system was enlarged to keep pace with the rapid increase in the population of the capital during the 1920's and soon the Ellida.

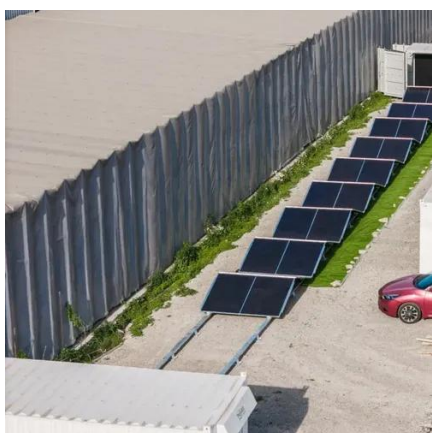
The 303MW Hellisheidi power plant is one of the world's biggest geothermal power plants by installed capacity. Steam at Hellisheidi plant is currently gathered from more than 300 boreholes. Credit: Ron Przysucha/Wikipedia Hellisheidi geothermal power plant is located at Hengil, Iceland. Credit:.



ON Power decided to harness a large geothermal energy resource just outside Reykjavik and build a modern geothermal flash steam combined heat and power plant (CHP). The Hellisheidi Geothermal Power Plant was built in phases, the first one commissioned in 2006 and the latest in 2018. The present.



The earliest grid energy storage power station northwest of reykjavik



[The earliest grid energy storage power station northwest of ...](#)

Located in Ruoqiang county in the Bayingolin Mongolian autonomous prefecture, the Ruoqiang pumped-storage power station is expected to contribute to grid stability in Xinjiang, a region ...

[The earliest grid energy storage power station in northwest Iceland](#)

Gas In 1905 a power plant was set up in Hafnarfjörður, a town which is a suburb of Reykjavík. Reykjavík wanted to copy their success, so they appointed Thor Jenssen to run and build a ...



[Hellisheidi Geothermal Power Plant, Hengill, Iceland](#)

Hellisheidi Power Plant Development
Hellisheidi Power Plant Makeup
Hellisheidi Hot Water Production and Supply
Hellisheidi Cold Water Production and Supply
Contractors and Suppliers Involved in The Hellisheidi Power Project
Orca CCS Plant Details
The Orca CCS facility, located adjacent to the Hellisheidi geothermal power plant, captures carbon dioxide (CO₂) directly from the air and stores it permanently as rocks in the earth's crust. The Orca carbon capture plant was developed and is operated by Climeworks, a direct air CO₂ capture technology company based in Switzerland. Icelandic company See more on power-technology COWI

Renewable energy: heat, power, and circular ...



The Hellisheidi Geothermal Power Plant was built in phases, the first one commissioned in 2006 and the latest in 2018. The present output of the ...

[Hellisheiðavirkjun Power Plant](#)

Located approximately 25 kilometers (15.5 miles) east of Reykjavik, Iceland, this power plant is a shining example of Iceland's commitment to renewable energy and sustainability.



[Hydropower in Iceland](#)

The first hydropower station was built in 1904. By 1937, electricity from hydropower replaced imported coal for cooking needs in Reykjavik. In the ...

[Amazon & Energy Northwest Announce Plans To Develop ...](#)

Amazon (Nasdaq; AMZN) and Energy Northwest, a public power agency leading in the development of next-generation nuclear technologies, today announced..



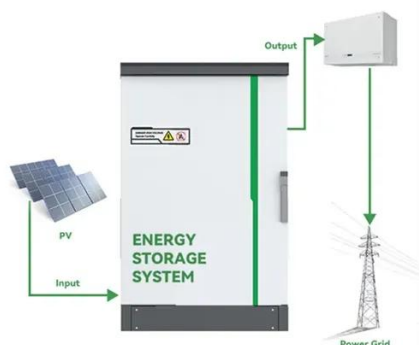
Power Plan

In 1990, Reykjavík Energy, a utility company, opened Nesjavellir Power Plant in one of Iceland's best geothermal areas. Today, there are six geothermal power plants in Iceland.



[The earliest grid energy storage power station northwest of Reykjavik](#)

Located in Ruoqiang county in the Bayingolin Mongolian autonomous prefecture, the Ruoqiang pumped-storage power station is expected to contribute to grid stability in Xinjiang, a region ...



[World's largest sodium-ion battery goes into operation](#)

The first phase of Datang Group's 100 MW/200 MWh sodium-ion energy storage project in Qianjiang, Hubei Province, was connected ...

[Hellisheiði Power Station](#)

Boreholes and pipes at the Hellisheiði Geothermal Plant. The power plant offers educational tours and presentations about sustainable energy as part of its Geothermal Energy Exhibition.



[THE REYKJAVIK ENERGY STORAGE PROJECT POWERING ...](#)



Marseille Energy Storage Power Station Project
Built at the Marseille-Fos Port, the marine geothermal power station Thassalia is the first in France, and even in Europe, to use the sea's ...

[Hellisheiði Power Station , Arctic Adventures](#)

The Hellisheiði Power Plant is located in Hengill and is only about 11 kilometers away from the Nesjavellir Geothermal Power Station. Being amongst the world's top ten geothermal energy ...



Standard 20ft containers



Standard 40ft containers



[Nesjavellir Geothermal Power Plant](#)

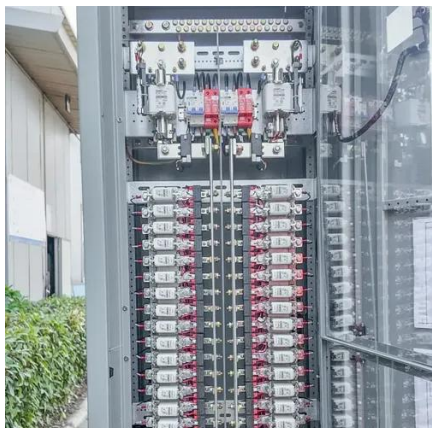
A part of this project was to dismantle two storage tanks at Oskjuhlid in Reykjavik and to erect them again at Reynisvatnsheiði. These storage ...

[Reykjavik's Renewable Energy Revolution: Harnessing ...](#)

Reykjavik, the capital of Iceland, is renowned worldwide for its dramatic landscapes and innovative spirit. Yet beyond its captivating natural beauty, Reykjavik serves as the epicentre ...



[First one million-kW pumped-storage power station ...](#)



As the first pumped-storage power station to begin operation in northwest China, Fukang pumped-storage power station possesses a ...

[Renewable energy: heat, power, and circular economy in one](#)

The Hellisheidi Geothermal Power Plant was built in phases, the first one commissioned in 2006 and the latest in 2018. The present output of the plant is 303 MWe and 200 MWth, making it ...



[Emergency Energy Storage Solutions in Reykjavik Powering ...](#)

When extreme weather hits Reykjavik or renewable energy output fluctuates, reliable emergency energy storage becomes the backbone of urban resilience. This article explores how modern ...

[Geothermal Exhibition . Visit Reykjavík](#)

Experience firsthand how green, sustainable energy is produced at Iceland's largest geothermal power plant. The Hellisheiði Geothermal Plant, owned ...



[Battery energy storage system](#)

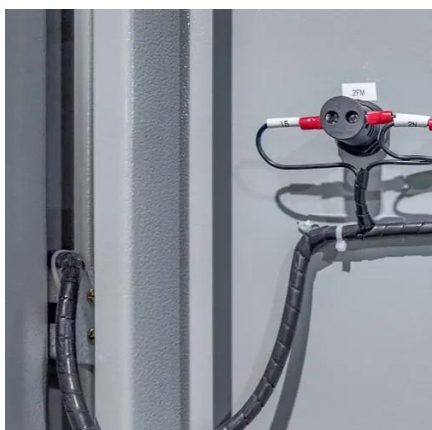


A battery energy storage system (BESS), battery storage power station, battery energy grid storage (BEGS) or battery grid storage is a type of ...



[Hellisheidi Geothermal Power Plant, Hengill, Iceland](#)

The plant's power output is primarily supplied to the aluminium refineries in the capital city of Reykjavik, which is located 20km ...



Power Plan

In 1990, Reykjavík Energy, a utility company, opened Nesjavellir Power Plant in one of Iceland's best geothermal areas. Today, ...

[Across China: Pioneering energy storage system lights up "roof ...](#)

The world's first intelligent grid-forming photovoltaic and energy storage power station, tailored for ultra-high altitudes, low-temperatures and weak-grid scenarios, has been ...



[Reykjavik energy storage plant operation](#)



Operated by ON Power, a subsidiary of Reykjavik Energy, Hellisheiði harnesses geothermal energy to produce electricity and hot water for Reykjavik and surrounding areas.



[World's largest grid-forming energy storage project ...](#)

The project is the largest of its kind in the global lithium iron phosphate battery storage sector, setting a benchmark for grid-forming ...

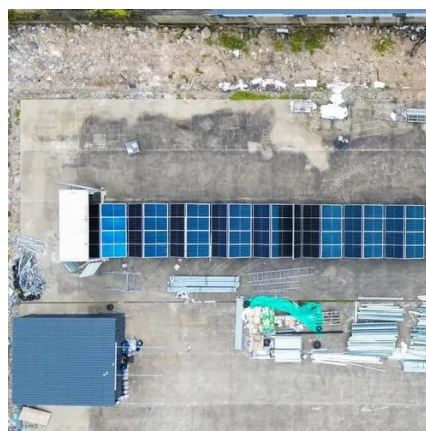


[Nesjavellir Geothermal Power Plant](#)

A part of this project was to dismantle two storage tanks at Oskjuhlid in Reykjavik and to erect them again at Reynisvatnsheidi. These storage tanks were built in the year 1968 and all parts ...

[Hellisheiði Power Station , Arctic Adventures](#)

The Hellisheiði Power Plant is located in Hengill and is only about 11 kilometers away from the Nesjavellir Geothermal Power Station. Being amongst the world's top ten geothermal energy ...



[Reykjavik Wind and Solar Energy Storage Power Station: A ...](#)



Why Hybrid Energy Systems Are the Future The Reykjavik Wind and Solar Energy Storage Power Station isn't just another renewable energy project--it's a masterclass in solving the ...

[World's first grid-scale, semi-solid-state energy storage project ...](#)

The 100 MW/200 MWh energy storage project featuring lithium iron phosphate (LFP) solid-liquid hybrid cells was connected to the grid near Longquan, Zhejiang Province, China.



[Hellisheidi Geothermal Power Plant, Hengill, Iceland](#)

A major carbon capture and storage (CCS) project, Orca, began operating at the Hellisheidi geothermal power plant site in September 2021. Claimed to be the world's biggest ...



Contact Us

For inquiries, pricing, or partnerships:

<https://zawojcsolina.pl>

Phone: +48 22 173 6647

Email: info@zawojcsolina.pl

Scan QR code for WhatsApp.

