



# Single-phase inverter cabinet used in power grid distribution substations in kabul





## Overview

---

This paper elaborates on designing and implementing a 3 kW single-phase grid-connected battery inverter to integrate a 51.2-V lithium iron phosphate battery pack with a 220 V 50 Hz grid.

This paper elaborates on designing and implementing a 3 kW single-phase grid-connected battery inverter to integrate a 51.2-V lithium iron phosphate battery pack with a 220 V 50 Hz grid.

With BENNING's INVERTRONIC compact range of inverters, the company offers highly reliable, cost-effective, single-phase, modular inverter systems which provide high-quality, maximum-reliability electrical power to the critical loads. In combination with TEBECHOP modular rectifier systems, the.

More and more mission critical loads for industrial and commercial applications require a smooth and uninterrupted supply of electricity. On the public network, major loads, as well as lightning strikes, generate dynamic overvoltages, undervoltages, sags/brownouts, and transients. The AC Priority.

As a new type of substation that has emerged after civil engineering substations, substation cabinets are suitable for home solar power system in residential areas, urban public substations, bustling downtowns, and construction power supplies, etc. If you want to learn more about substation.

Integrating residential energy storage and solar photovoltaic power generation into low-voltage distribution networks is a pathway to energy self-sufficiency. This paper elaborates on designing and implementing a 3 kW single-phase grid-connected battery inverter to integrate a 51.2-V lithium iron.

OPUS Inverter Systems are robust, free convection cooled, N+1 redundant DC to AC power conversion solutions for critical infrastructure applications. Inverter systems can be integrated to OPUS Power System and monitored via VIDI controller. Inverter Cabinet systems are configured according to.

In this paper, various inverter topologies are presented depending upon the number of power processing stages, the type of power decoupling between the PV module and grid, whether they utilizes a transformer (either line or high frequency)



or not and the type of grid-connected power stage. What is the difference between a stand-alone and a grid-tied inverter?

**Stand-alone inverters:** These are independent systems that convert DC power stored in batteries into AC power. They are primarily used in off-grid systems, such as remote cabins, RVs, and boats. **Grid-tied inverters:** These inverters are designed to convert DC power into AC power that is synchronized with the grid.

What is a stand-alone inverter used for?

The result is an AC output that can be used to power standard household appliances that operate on AC power. **Stand-alone inverters:** These are independent systems that convert DC power stored in batteries into AC power. They are primarily used in off-grid systems, such as remote cabins, RVs, and boats.

What is a grid tied inverter?

**Grid-tied inverters:** These inverters are designed to convert DC power into AC power that is synchronized with the grid. They are commonly used in residential solar photovoltaic systems. The quality of the output AC from a single-phase inverter is determined by the type of waveform it generates. There are typically three types:.

What is a single phase inverter?

**Inverter Circuit:** A circuit which is used to convert the specified voltage or frequency range with the combining of converter and inverter, it consist of electric switches such as thyristors and transistors. Single phase inverters are classified into two types. They are : Basically there are three types of waveform of the single phase inverter:



## Single-phase inverter cabinet used in power grid distribution substation



### [Design and Implementation of Single-Phase Grid-Connected Low ...](#)

This paper elaborates on designing and implementing a 3 kW single-phase grid-connected battery inverter to integrate a 51.2-V lithium iron phosphate battery pack with a 220 ...

### [Single phase grid-connected inverter: advanced control ...](#)

The increasing penetration of single-phase inverters in distribution networks has raised concerns about grid stability and power quality. Issues such as voltage regulation, harmonic distortion, ...



### [Single-Phase Inverter - Electricity - Magnetism](#)

In summary, single-phase inverters play an indispensable role in modern power systems. By converting DC power into usable AC power, they enable a multitude of ...

### [ITEE::A review of Single-Phase Inverter Topology for Grid ...](#)

In this paper, various inverter topologies are presented depending upon the number of power processing stages, the type of power decoupling between the PV module and grid, whether ...



### [Benning INVERTRONIC Compact Single-Phase ...](#)

The Benning INVERTRONIC Compact Single-Phase Cabinet Inverter System is perfect for industrial and commercial applications with critical ...



### **Substation cabinets**

This article will give you an overall introduction to substation cabinets and how to use it properly, also the precautions tips on the ...



### [INVERTRONIC compact: Single-Phase Inverter System \(Cabinet\)](#)

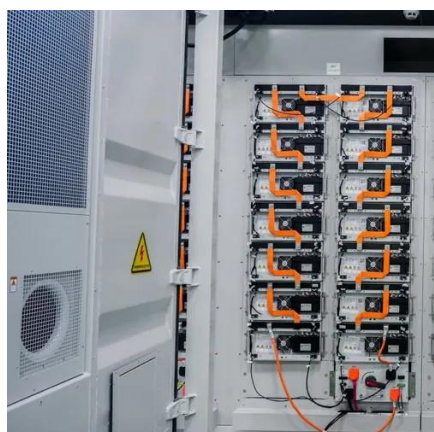
The AC Priority option for INVERTRONIC modular systems allows the loads to be powered by the incoming AC Bypass power during normal operation of the inverter system.



### [Single-Phase Modular Inverter \(cabinet\)](#)



With BENNING's INVERTRONIC compact range of inverters, the company offers highly reliable, cost-effective, single-phase, modular inverter systems which provide high-quality, maximum ...



### [Substations - Volume VI - Voltage Regulators and Capacitors](#)

Both three-phase and single-phase voltage regulators are used in distribution substations to regulate the load-side voltage. Substation regulators are one of the primary means, along with ...

### [Single Phase Rack Mounted Off-grid Inverter](#)

In summary, Single Phase Rack Mounted Off-grid Inverter rack/cabinet photovoltaic inverter with lithium battery communication is a game changer for residential solar power systems, ...



### [Single-Phase Modular Inverter \(cabinet\)](#)

With BENNING's INVERTRONIC compact range of inverters, the company offers highly reliable, cost-effective, single-phase, modular inverter ...

### [Basics of Designing Power Substations](#)



Power Substations For the most part, electric power substations are viewed as the most integral part of a power utilities' electric system, with electric systems being comprised of ...



### Substation cabinets

This article will give you an overall introduction to substation cabinets and how to use it properly, also the precautions tips on the installation and operation.



### [Design and Implementation of Single-Phase Grid ...](#)

This paper elaborates on designing and implementing a 3 kW single-phase grid-connected battery inverter to integrate a 51.2-V lithium ...



### [The Different Types of Substations and Their ...](#)

Introduction The power grid is a complex, interconnected network that delivers electricity from producers to consumers. A key ...



### [Single-Phase Modular Inverter \(cabinet\)](#)



With BENNING's INVERTRONIC compact range of inverters, the company offers highly reliable, cost-effective, single-phase, modular inverter systems which provide high-quality, maximum ...



### Single Phase Inverter

Here in this article, we will discuss types of single phase inverters, and their essential parts, applications, advantages, and disadvantages.



### Types of Electrical Substations and Functions

As the demand for electrical power continues to grow, it can be met through power generation substations. There are different types of power ...



### Single-Phase Inverter - Electricity - Magnetism

In summary, single-phase inverters play an indispensable role in modern power systems. By converting DC power into usable AC ...



### Power Distribution Systems



This section delves into the major components of AC power distribution systems, including distribution lines, distribution transformers, circuit ...



### [INVERTRONIC compact: Single-Phase Inverter ...](#)

The AC Priority option for INVERTRONIC modular systems allows the loads to be powered by the incoming AC Bypass power during normal operation ...

### [Understanding Grid Stations, Substations, and ...](#)

For energy developers, understanding the distinctions between grid stations, substations, and switchyards is essential to ...



### [Single Phase Inverter](#)

Here in this article, we will discuss types of single phase inverters, and their essential parts, applications, advantages, and ...

### [OPUS INV OC2066 Inverter Cabinet Systems](#)



OPUS Inverter Systems are robust, free convection cooled, N+1 redundant DC to AC power conversion solutions for critical infrastructure ...



### [What is distribution substation and its main components? , EEP](#)

In distribution substation, busbars are used at both high side and low side voltages to connect different circuits and to transfer power from the power supply to multiple outgoing ...

### [Guardians of the Grid: 6 Core Electrical Cabinets Explained](#)

Today, let's take a closer look at the incoming cabinet, the outgoing cabinet, the metering cabinet, the PT cabinet, the tie cabinet, and the isolation cabinet. These six "core ...



### [OPUS INV OC2066 Inverter Cabinet Systems](#)

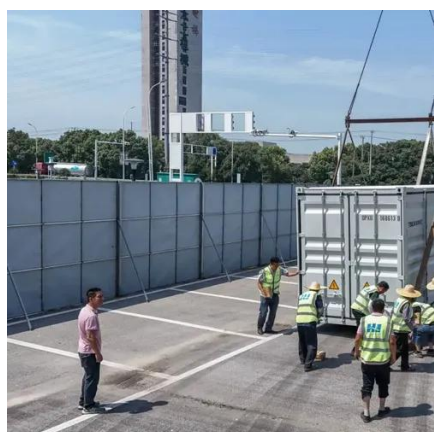
OPUS Inverter Systems are robust, free convection cooled, N+1 redundant DC to AC power conversion solutions for critical infrastructure applications. Inverter systems can be integrated ...



### [Substations - Power Grid Integration](#)



The electrical grid, in particular, is a smart network of specialized equipment that provides for the safe and efficient transmission ...

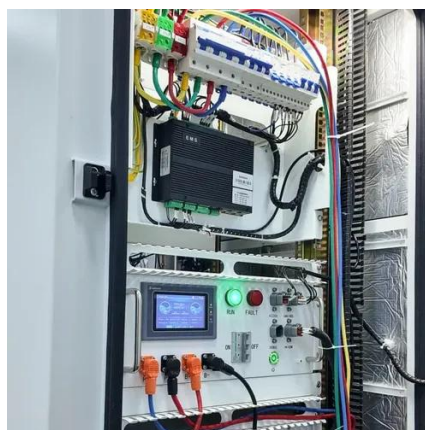


### [Medium voltage products Technical guide The MV/LV transformer](#)

It can be defined as a transforming, conversion, transmission or distribution substation. A MV/ LV transformer electrical substation consists, therefore, of the set of devices dedicated to the ...

### [What Is a Distribution Substation and Its Main Components](#)

A distribution substation plays a pivotal role in the electrical power grid, acting as the vital link between transmission systems and end consumers. This crucial infrastructure ...



### [The Ultimate Guide To Electrical Substation ...](#)

Electrical substation transformers are the most critical primary equipment in substations. Its main function is to increase or decrease the electric ...



## Contact Us

---

For inquiries, pricing, or partnerships:

<https://zawojcsolina.pl>

Phone: +48 22 173 6647

Email: [info@zawojcsolina.pl](mailto:info@zawojcsolina.pl)

Scan QR code for WhatsApp.

