



# San diego energy base station to cabinet





## Overview

---

San Diego Gas & Electric (SDGE or SDG&E) is a regulated utility that provides gas and electric service to customers in southern California, United States. It is owned by Edison International, an energy services holding company based in California. SDGE provides energy service to 3.7 million consumers through 1.49 million miles of lines.

These maps are provided by SDG&E in accordance with requirements set forth by the California Public Utilities Commission. This map is not survey grade. SDG&E is not responsible for any party's use of or reliance upon these maps.

These maps are provided by SDG&E in accordance with requirements set forth by the California Public Utilities Commission. This map is not survey grade. SDG&E is not responsible for any party's use of or reliance upon these maps.

These maps are provided by SDG&E in accordance with requirements set forth by the California Public Utilities Commission. This map is not survey grade. SDG&E is not responsible for any party's use of or reliance upon these maps. SDG&E makes no warranties, express or implied, regarding the accuracy.

Find local businesses, view maps and get driving directions in Google Maps.

SDG&E created a self-service hub for electric and gas construction information and resources you'll need when: New Service projects include renovations or upgrades that significantly change the electrical or gas power needs or new construction that requires electric (overhead or underground) or gas.

Manage and pay your bills, Start, Stop and Move services, and more online. Forgot Username or Password?

New to My Energy Center?

Sign up today Need More Time to Pay?

Suspect a gas leak?

Call 911 or call us at 1-800-611-7343. SDG&E isn't the only electricity provider in San Diego and Orange County.

San Diego Gas & Electric (SDGE or SDG&E) is a regulated public utility that



provides natural gas and electricity to San Diego County and southern Orange County in southwestern California, United States. It is owned by Sempra, a Fortune 500 energy services holding company based in San Diego. SDGE.

What are the types of above ground equipment that may be installed and why?

1. Transformers - The most commonly installed transformers in residential neighborhoods are green, approximately 3'x3'x 3' above ground boxes. 2. Other above ground equipment installed depends upon the electric load being. What is San Diego Gas & Electric (SDGE)?

Whether it's powering homes or supporting local businesses, SDGE plays an integral role in keeping San Diego running efficiently and sustainably. San Diego Gas & Electric (SDGE) is a leading utility company that provides electricity and natural gas services to the San Diego region.

Who owns San Diego Gas & Electric?

San Diego Gas & Electric (SDGE or SDG&E) is a regulated public utility that provides natural gas and electricity to San Diego County and southern Orange County in southwestern California, United States. It is owned by Sempra, a Fortune 500 energy services holding company based in San Diego.

Is SDG&E the only electricity provider in San Diego & Orange County?

SDG&E isn't the only electricity provider in San Diego and Orange County. While we are responsible for the delivery of electricity and other services, there are other providers, known as Community Choice Aggregators (CCAs), in the region that purchase electricity on behalf of homes and businesses. Learn more about CCAs.

Who owns SDGE energy?

It is owned by Sempra, a Fortune 500 energy services holding company based in San Diego. SDGE provides energy service to 3.7 million consumers through 1.49 million electric meters and more than 905,000 natural gas meters. The utility's area spans 4,100 square miles (10,600 square kilometers). SDGE employs about 5,000 people.



## San diego energy base station to cabinet

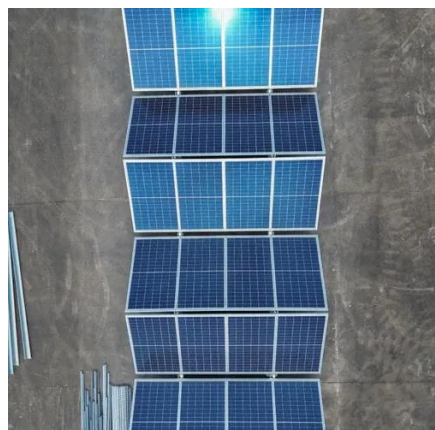


### [Battery Energy Storage Systems](#)

Learn more about the County of San Diego's Battery Energy Storage Systems Project.

### [SDG& E Interconnection Map](#)

SDG& E does not support the inappropriate use of this data that: (1) Puts the physical or cyber-security of the electric grid or gas pipelines at risk; (2) ...



### [Naval Base San Diego Directory](#)

Naval Base San Diego (NBSD) is the principal homeport of the Pacific Fleet, consisting of 60 Navy ships, 2 Coast Guard cutters and home base to 150 ...

### [SAN DIEGO FIRE-RESCUE DEPARTMENT](#)

While most lifeguard Stations are well below 5,000 square feet, please note that the architectural design of the lifeguard station shall use Green Building Technology in ...



### CONVERSION Q& A

It is SDG& E's practice to place equipment within the city franchise area (street right-of-way) whenever possible using best engineering practices. Details regarding equipment placement is ...



### [Batten down the batteries: Energy storage project](#)

...

An \$8 million battery energy storage project is coming to Naval Base San Diego, using zinc-based technology that its makers tout as ...



### Home , SDG& E Today

From Carlsbad to Costa Mesa, Pechanga Arena to Petco Park, the San Diego and Orange County regions ...



### [SDGE , San Diego Gas & Electric](#)



SDG& E isn't the only electricity provider in San Diego and Orange County. While we are responsible for the delivery of electricity and other services, there are other providers, known ...



### [San Diego Gas & Electric](#)

Overview  
Generation  
portfolio  
Interconnections  
History  
Controversies

San Diego Gas & Electric (SDGE or SDG& E) is a regulated public utility that provides natural gas and electricity to San Diego County and southern Orange County in southwestern California, United States. It is owned by Sempra, a Fortune 500 energy services holding company based in San Diego. SDGE provides energy service to 3.7 million consumers through 1.49 million e...

### [Energy projects approved at Camp Pendleton, ...](#)

California Energy Commission has approved a \$50 million grant to support energy storage projects at Camp Pendleton and Naval ...



### [What are the base station energy storage cabinets? , NenPower](#)

Base station energy storage cabinets are critical components of telecommunications infrastructure designed to ensure reliable power supply, support ...



## Home , SDG& E Today

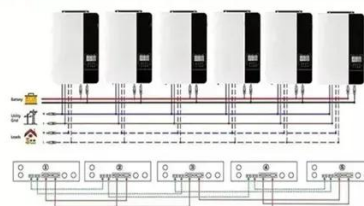
From Carlsbad to Costa Mesa, Pechanga Arena to Petco Park, the San Diego and Orange County regions bring an energy all their own. We're committed to powering the ...



## [State boosts critical battery storage project at Camp Pendleton ...](#)

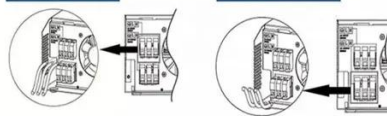
California today approved a \$42 million grant to International Electric Power to build a long-duration energy storage project at Marine Corps Base Camp Pendleton in San ...

Parallel (Parallel operation up to 6 unit (only with battery connected))



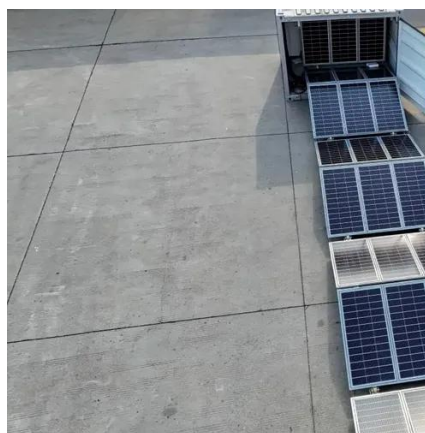
AC input wires

AC output wires



## [My Energy Center 2024 , San Diego Gas & Electric](#)

My Energy Center is a new unified digital customer portal that replaced My Account on August 4, 2024. My Energy Center features a modern design and makes it easier for you to manage ...



## [What are the base station energy storage ...](#)

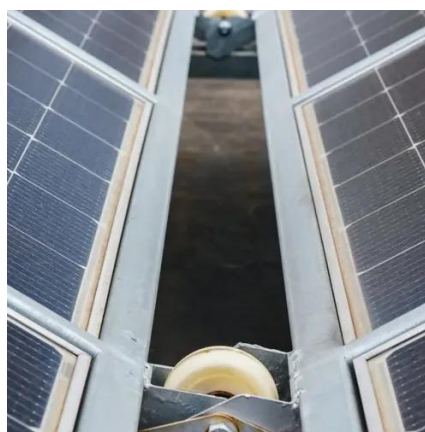


Base station energy storage cabinets are critical components of telecommunications infrastructure designed to ensure reliable power ...



### Google Maps

Find local businesses, view maps and get driving directions in Google Maps.



[PREFINISHED CABINETS , San Diego CA Prefab Kitchen Cabinets ...](#)

Beautiful RTA & Assembled Kitchen Cabinets Delivered to San Diego, CA Skip the Showroom for Big Savings on Solid Wood Cabinets - Shipped Directly to the San Diego Area Discover One ...

### [SDG& E Interconnection Map](#)

SDG& E does not support the inappropriate use of this data that: (1) Puts the physical or cyber-security of the electric grid or gas pipelines at risk; (2) Violates customer privacy; (3) ...



### FAQs



Learn more about building electrification by joining the San Diego Building Electrification Coalition (SDBEC) for our upcoming events, as well as events led by our coalition of partners.



### [NAVBASESANDIEGOINST 5450.8T CHAPTER Page](#)

105. Operations Department a. Liquid Cargo. The mission is to provide 24-hour oil spill response to NBSD and San Diego Harbor, south of the Coronado Bridge. Liquid Cargo is capable of oil ...



### **Project Resources**

Begin by referencing these process guides for detailed information for what to expect and how to prepare for new and upgraded service requests. They provide a roadmap for energization.

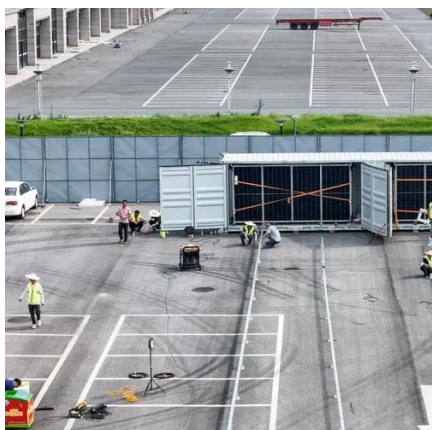


### [Understanding SDGE: A Comprehensive Guide to San Diego ...](#)

SDGE offers a wide range of services designed to meet the diverse energy requirements of its customers. The company provides electricity transmission and distribution ...



### [SAN DIEGO COUNTY FIRE PROTECTION DISTRICT](#)



and decommissioning of energy systems used for generating or storing electricity, including BESS. However, existing regulations, including the California Fire Code (CFC) and the County of San ...

### [San Diego, CA Electricity Generation Summary](#)

View all available electricity data in San Diego, CA. View monthly electricity generation, the breakdown by power source, details on the 63 power plants in San Diego, CA, and more.



**1075KWHH ESS**

### [Cabinet Pulls , Stylish Hardware for Effortless ...](#)

Explore our wide range of cabinet pulls, meticulously crafted to bring effortless elegance and functionality to your cabinets. Discover an array of ...

### [San Diego Gas & Electric](#)

San Diego Gas & Electric (SDGE or SDG& E) is a regulated public utility that provides natural gas and electricity to San Diego County and southern Orange County in southwestern California, ...



### [California Grants \\$50M for Energy Storage Projects at Camp ...](#)



The California Energy Commission (CEC) approved two grants totaling \$50 Million for Long-Duration Energy Storage (LDES) projects at Marine Corps Base Camp Pendleton ...



### [Kitchen Cabinets in San Diego](#)

Explore premium kitchen cabinets, quartz countertop colors, vanities, and custom closets. Expert home storage design solutions in San Diego.





## Contact Us

---

For inquiries, pricing, or partnerships:

<https://zawojcsolina.pl>

Phone: +48 22 173 6647

Email: [info@zawojcsolina.pl](mailto:info@zawojcsolina.pl)

Scan QR code for WhatsApp.

