



# Integrated ac dc power supply for solar telecom integrated cabinets





## Integrated ac dc power supply for solar telecom integrated cabinets



### [One Site One Cabinet Power Cabinet Solution](#)

One cabinet per site is sufficient thanks to ultra-high energy density and efficiency. The eMIMO architecture supports multiple input (grid, PV, genset) and output (12/24/48/57 V DC, ...)

### [48V Hybrid Solar Rectifier System](#)

48V Hybrid Solar Rectifier System, 48VDC Outdoor Solar Power System, solar power telecom base station can provide a stable ...



### [AC/DC Integrated Cabinet Market](#)

AC/DC cabinets are essential for hybrid power systems integrating solar PV, batteries, and generators at telecom sites, reducing diesel dependency and costs. Projects like ...



### [Outdoor Telecom DC Power Supply Wall Mount](#)

The Wall Mount Telecom Power Supply is an integrated outdoor power cabinet, integrating AC input power distribution, lightning protection unit, ...



### [Integrated DC Power 48VDC 90A Telecom Power Supply With ...](#)

The CNHT4890S is specially designed to meet the demand for compact, flexible, high performance, high reliability power supply.



### [Outdoor 100kW/215kWh Air-cooled Integrated Energy Storage ...](#)

High quality Outdoor 100kW/215kWh Air-cooled Integrated Energy Storage System For Grid Power / Solar Panel PV from China, China's leading product market Telecom Power System ...



### [House System Telecom Power Supply DC-AC Integrated UPS](#)

House System Telecom Power Supply DC-AC Integrated UPS manufactures, Source China high quality and best price UPS, Integrated UPS, Online UPS Manufacturers - Shenzhen Consnant ...

### [Telecom Cabinet with Integrated Power & Battery for Reliability](#)



The Power and Battery Integrated Cabinet combines power supply units and battery storage into a compact, weatherproof outdoor enclosure. Designed for telecom base stations, off-grid ...



### [1.74KW Outdoor Telecom Cabinet Rectifier System EPU43K4 ...](#)

This power supply system converts AC power into stable and reliable 48V DC power. The rectifier system is designed to be compatible with a 19-inch rack and is 1U in height.

### [100kW DC 200V~750V AC/DC power module Optical storage ...](#)

Application: Suitable for small and medium-sized industrial and commercial energy storage system scenarios, which can be used for peak and valley arbitrage, peak cutting and valley ...



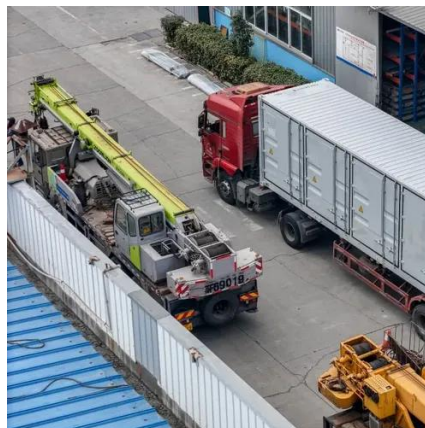
### [Eltek Flatpack2 Integrated](#)

The Flatpack2 is a two rack-unit high system that delivers 48V DC power to telecom infrastructure. The compact size of the system makes it perfect ...

## Power Supply System



Comprehensive High-Efficiency Telecom Power and Solar Integration Solutions Leveraging advanced power electronics control technology and modern materials, we provide global ...



### [Outdoor Telecom DC Power Supply Wall Mount](#)

The Wall Mount Telecom Power Supply is an integrated outdoor power cabinet, integrating AC input power distribution, lightning protection unit, switch rectifier, battery pack, DC output ...



### **Telecom Power System**

Capacity range: 60~1800A ATTOM -48VDC power system comes with standard 19-inch rack mount design with a management and remote monitoring.



### [24KW Integrated Telecom Power Cabinet with Rectifier and Power](#)

To meet the comprehensive power needs of such networks, it seamlessly combines high-efficiency rectifiers, AC/DC power distribution, surge protection, and optional battery ...



### [100kW DC 200V~750V AC/DC power module ...](#)



Application: Suitable for small and medium-sized industrial and commercial energy storage system scenarios, which can be used for peak and valley ...



### [Eltek Flatpack2 Integrated](#)

The Flatpack2 is a two rack-unit high system that delivers 48V DC power to telecom infrastructure. The compact size of the system makes it perfect for use in 19" wide racks and ...



### **Power Supply System**

From telecom base stations and outdoor sites to hybrid solar-powered systems, we provide scalable, energy-efficient, and highly integrated power system solutions, ensuring continuous ...



### [One Site One Cabinet Power Cabinet Solution](#)

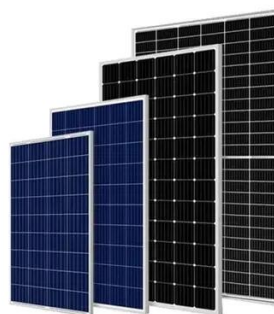
One cabinet per site is sufficient thanks to ultra-high energy density and efficiency. The eMIMO architecture supports multiple input (grid, PV, ...



### [Power Supply Cabinets](#)



Raycap Power Supply Cabinets Systems can accommodate Power Supply Unit (PSU), battery bank, AC and DC distribution units, and sensors.



### [24KW Integrated Telecom Power Cabinet with Rectifier and ...](#)

To meet the comprehensive power needs of such networks, it seamlessly combines high-efficiency rectifiers, AC/DC power distribution, surge protection, and optional battery ...



## Contact Us

---

For inquiries, pricing, or partnerships:

<https://zawojcsolina.pl>

Phone: +48 22 173 6647

Email: [info@zawojcsolina.pl](mailto:info@zawojcsolina.pl)

Scan QR code for WhatsApp.

