



How to turn off the wind-solar hybrid of a solar-powered communication cabinet





Overview

If you need to turn off or disconnect the system, do so in reverse order to the installation. Pressing any key will illuminate the backlight for 15 seconds. After 15 seconds of inactivity, the backlight will power off. Press the “▲” key to go back to the previous page of content.

If you need to turn off or disconnect the system, do so in reverse order to the installation. Pressing any key will illuminate the backlight for 15 seconds. After 15 seconds of inactivity, the backlight will power off. Press the “▲” key to go back to the previous page of content.

Store the manual where it can easily be accessed. This manual includes all safety warnings, installation, and operation guidance of SWS series wind&solar hybrid controllers. Let's go green; Let's win together Features: □ Wind&Solar hybrid controller in high quality. □ LCD Display. Easy setup. □.

DC supply, switching power supply or motor driven generator to simulate the wind generator to charge testing is prohibited! If your battery voltage lower than 9V, connect to controller is prohibited! Controller was damaged much possibly caused by this occurrence. Solar panel and loading rated power.

The manual explains how to connect the device to batteries, solar panels, and wind turbines. It also describes the LCD browsing instructions, abnormal status LCD show message automatically, buzzer alarm instructions, system setting instructions, troubleshooting, maintenance, usage environment.

At the same time, use a crystal oscillator for timing control, timing control precision□ other, and show more intuitive□ effectively extend the service life of the controller□ intelligent controller□ One-touch touch switches,complete all operations and settings□ Controller solidly fixed. L * W * H.

On the controller you can manually set whether using wind charge to battery. On the controller you can manually set whether using solar charge to battery. module automatically. Wind generator voltage is increased to the charging voltage, and it is boost charging. When wind generator voltage is.

If you need to turn off or disconnect the system, do so in reverse order to the



installation. Pressing any key will illuminate the backlight for 15 seconds. After 15 seconds of inactivity, the backlight will power off. Press the “▲” key to go back to the previous page of content. Press the “▼” key. What should I know before using a wind & solar hybrid controller?

Before Using the controller, please read all instructions and cautionary markings on the unit and this manual. Store the manual where it can easily be accessed. This manual includes all safety warnings, installation, and operation guidance of SWS series wind&solar hybrid controllers.

Where do I store a manual for a wind & solar hybrid controller?

Store the manual where it can easily be accessed. This manual includes all safety warnings, installation, and operation guidance of SWS series wind&solar hybrid controllers. Let’s go green; Let’s win together Features: Wind&Solar hybrid controller in high quality. LCD Display.

What is included in the wind/solar hybrid controller user manual?

Below you will find brief information for wind/solar hybrid controller. This document is a user manual for the wind/solar hybrid controller. It includes information on installation, use and troubleshooting. The manual explains how to connect the device to batteries, solar panels, and wind turbines.

How to wire a wind & solar hybrid controller?

1. Make sure switch is at ‘OFF’ situation. Note: Wire an in-line fuse holder no more than 150mm from the battery positive terminal.
2. Take off protection panel which on rear of device side.
3. Connect battery wires to controller NO.6 red terminal and NO.7 black terminals accordingly. Page 6 Specification of excellent wind&solar hybrid controller



How to turn off the wind-solar hybrid of a solar-powered communicat



[Hybrid Solar System: How It Works and Its Benefits](#)

A Hybrid Solar System contains solar panels, a hybrid inverter, and battery storage to create an uninterrupted energy solution. The solar panels store ...

[Wind Solar Hybrid System](#)

Wind solar hybrid system lets you save double the money and electricity. We produce world-class systems and specialize in providing commercial wind solar solutions.



[SilentWind MPPT HYBRID BOOST CHARGE ...](#)

How to disconnect the charge controller (wind, solar, battery): Disconnect the Silentwind generator (to avoid risks, once you remove the 3 wires from ...

[Downloads for ECO-WORTHY Solar Product ...](#)

Downloads These manuals can help you quickly understand ECO-WORTHY's solar products, so you can quickly and easily build your own ...



[Solar Wind Hybrid System: Everything You Need to Know](#)

This guide will explain exactly what a solar-wind hybrid system is, how it works, and why it's becoming the go-to hybrid solar solution for cabins, RVs, farms, and homes seeking ...

[Wind/solar hybrid controller instructions](#)

System Description: This controller is designed for wind turbines and solar power DC power supply system, street lighting system design, and the use of special computer chip intelligent ...



[SUNWAY SSWC-06-1224-TA USER MANUAL Pdf ...](#)

When solar module voltage goes above point of DTTV (Day Time Threshold Voltage), the solar controller will recognize the starting voltage and turn ...

[How to Safely Turn Off Your Solar Inverter](#)



The first step in shutting down your solar inverter is to turn off the AC disconnect. This switch is usually located near the inverter and ...



[SUNWAY SSWC-06-1224-TA USER MANUAL Pdf Download , ManualsLib](#)

When solar module voltage goes above point of DTTV (Day Time Threshold Voltage), the solar controller will recognize the starting voltage and turn off the load after 1 minutes delay.

[WIN POWER SWS SERIES USER MANUAL Pdf Download , ManualsLib](#)

View and Download Win Power SWS Series user manual online. Wind& Solar Hybrid Controller. SWS Series controller pdf manual download. Also for: Wws03-12, Wws04-12, Wws06-24.



[Harness the Power of Sun and Wind: Your Guide to a Home Hybrid Energy](#)

Conclusion In conclusion, solar and wind hybrid systems offer a promising solution for households seeking to ...



[SilentWind MPPT HYBRID BOOST CHARGE CONTROLLER ...](#)



How to disconnect the charge controller (wind, solar, battery): Disconnect the Silentwind generator (to avoid risks, once you remove the 3 wires from the generator, please put at least ...

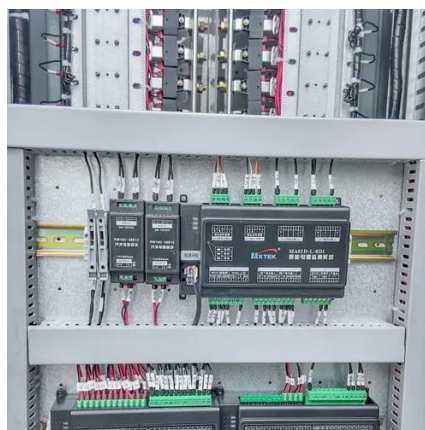


[Solar Wind Hybrid System: Everything You Need ...](#)

This guide will explain exactly what a solar-wind hybrid system is, how it works, and why it's becoming the go-to hybrid solar solution for cabins, ...

[wind/solar hybrid controller User Manual , Manualzz](#)

This document is a user manual for the wind/solar hybrid controller. It includes information on installation, use and troubleshooting. The manual explains how to connect the device to ...



User

When solar module voltage goes above point of DTTV (Day Time Threshold Voltage), the solar controller will recognize the starting voltage and turn off the load after 1 minutes delay.

[WIN POWER SWS SERIES USER MANUAL Pdf ...](#)



View and Download Win Power SWS Series user manual online. Wind& Solar Hybrid Controller. SWS Series controller pdf manual download. Also for: ...



[How to set up a simple hybrid wind & solar off-grid ...](#)

Integrating Small-Scale Wind Turbines with Solar Photovoltaic Systems: A Guide to Efficient Hybrid Energy Generation The ...



[Wind Turbine and Solar Panel Combination](#)

The wind solar hybrid system's main components include a wind turbine and tower, solar photovoltaic panels, batteries, wires, a ...



[Solar Wind Hybrid System: Everything You Need ...](#)

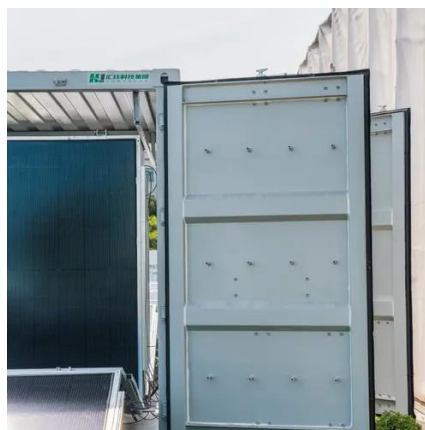
The wind solar hybrid system is a game-changer, especially for off-grid applications like remote cabins, RVs, or farms. It drastically reduces ...



[WindSoleil 600-Watt Off-Grid Solar + Wind Hybrid Kit](#)



This WindSoleil Solar & Wind Energy Hybrid Kit helps you get off the grid and provide your own electricity. Great for Small Cabins, Tiny Homes, Huts, or RV's. [Battery Included]



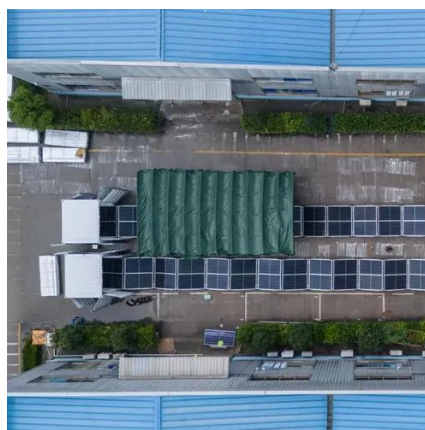
[Solar Hybrid System in the Philippines](#)

How a hybrid system works in the Philippines, its benefits, and how to use it to have more security and economy in energy generation.



[Should I Turn My Hybrid Inverter Off at Night?](#)

If you turn the hybrid power inverter off every night, you break this monitoring routine. That can lead to gaps in performance data, missed alerts, communication hiccups ...



[Wind & Solar Hybrid Controller User Manual](#)

(If do not buy Boost & Buck Wind Solar Controller, there is no this function) Once wind generator voltage is lower than battery voltage, controller starts boost



[Hybrid Wind & Solar MPPT Charge Controller](#)



If you need to turn off or disconnect the system, do so in reverse order to the installation.





Contact Us

For inquiries, pricing, or partnerships:

<https://zawojcsolina.pl>

Phone: +48 22 173 6647

Email: info@zawojcsolina.pl

Scan QR code for WhatsApp.

