



# How to divide the battery cabinet into amperes and current





## Overview

---

First, determine the battery capacity (C) in Amp-hours (Ah). Next, determine the desired charge time (t) in hours. Next, gather the formula from above =  $I = C / t$ . Finally, calculate the Charging Current (I) in Amps (A).

First, determine the battery capacity (C) in Amp-hours (Ah). Next, determine the desired charge time (t) in hours. Next, gather the formula from above =  $I = C / t$ . Finally, calculate the Charging Current (I) in Amps (A).

The capacity of a battery or accumulator is the amount of energy stored according to specific temperature, charge and discharge current value and time of charge or discharge. Even if there is various technologies of batteries the principle of calculation of power, capacity, current and charge and.

Working space shall be measured from the edge of the battery cabinet, racks, or trays, (NEC 480.9, 110.26) Spaces about the ESS shall comply with NEC 110.26. Working space shall be measured from the edge of the ESS modules, battery cabinets, racks, or trays, (NEC 706.10(C)) For battery racks, there.

Amperage, or current, is the amount of electricity flowing through a wire. In battery systems, amps represent how fast energy is being drawn from or delivered to the battery. High amp drawers can heat a battery or reduce lifespan, so correct calculation is critical. Part 2. Why these calculations.

By knowing the Amp Hour rating of a battery and the current draw of the device, you can estimate the runtime of the battery before it needs to be recharged or replaced. All you need to do is divide the capacity of a battery in ampere-hours (Ah) by the current draw in amperes (A). This will give you.

The resistance R in ohms ( $\Omega$ ) is equal to the voltage V in volts (V) divided by the current I in amps (A): The resistance R in ohms ( $\Omega$ ) is equal to the squared voltage V in volts (V) divided by the power P in watts (W): The resistance R in ohms ( $\Omega$ ) is equal to the power P in watts (W) divided by the.

An Amps Draw Calculator is an essential tool designed to compute the current draw (in amperes) of an electrical device based on its power consumption and the voltage of the power source. This understanding is critical to ensure that electrical



systems are safe, efficient, and capable of managing.



## How to divide the battery cabinet into amperes and current



### Ohms Law Calculator

Simple to use Ohm's Law Calculator. Calculate Power, Current, Voltage or Resistance. Just enter 2 known values and the calculator will solve for the others.

### kVA Calculator

FAQs How do I convert kVA to amps? Find the voltage of the system. Then, multiply the apparent power in kVA by 1,000 to obtain a value in VA (volt ...



SUPPORT REAL-TIME ONLINE  
MONITORING OF SYSTEM STATUS



### [Current divider, DC Circuits](#)

Each resistor (branch) current is a fraction, or percentage, of the total current. This is why a parallel resistor circuit is often called a current divider. Disconnect the battery from the rest of ...

### [Battery pack calculator : Capacity, C-rating, ampere, charge and](#)

For a given capacity, C-rate is a measure that indicate at what current a battery is charged and discharged to reach its defined capacity. A 1C (or C/1) charge loads a battery that is rated at, ...



## Current Calculator

Use our current calculator to calculate amps given the voltage, power, or resistance. Plus, learn the formulas to calculate current.



## [Current divider, DC Circuits](#)

Each resistor (branch) current is a fraction, or percentage, of the total current. This is why a parallel resistor circuit is often called a current divider. ...



## [Amps to Watts Converter](#)

To convert amps (electrical current) to watts (electrical power) at a fixed voltage, you can use the equation:  $watts = amps \times volts$ . Simply ...



## [Basics of Voltage, Current, and Resistance for ...](#)



Learn the fundamentals of voltage, current, and resistance in electronics. Ohm's Law, practical applications, and key concepts with ...



### [Volts To Amps Calculator - Easy Conversion Tool](#)

Volts to Amps Calculator This simple calculator allows you to convert voltage (in volts) to current (in amps) by using Ohm's Law, which states that the current in a circuit equals the voltage ...

### [Battery pack calculator : Capacity, C-rating, ampere, charge and](#)

Free battery calculator! How to size your storage battery pack : calculation of Capacity, C-rating (or C-rate), ampere, and runtime for battery bank or storage system (lithium, Alkaline, LiPo, Li ...



### [How to divide the battery cabinet into amperes and current](#)

The basic formula for calculating battery amp hours is to divide the battery's watt-hours (Wh) by its voltage (V). This will give you the battery's amp hours (Ah) capacity.



### [Amp Hours questions : r/ElectricalEngineering](#)



If you divide amp hours by time you get amps, which is your average current. If you multiply amps times hours you get amp hours, which is a measure of charge capacity. A 100 amp hour ...

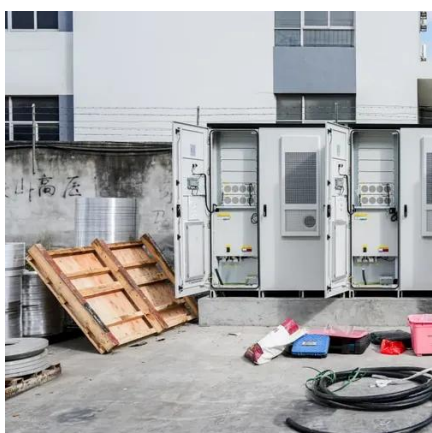


### Amps Draw Calculator

An Amps Draw Calculator is an essential tool designed to compute the current draw (in amperes) of an electrical device based on ...

### [Charging Current Calculator](#)

Enter the battery capacity and the desired charge time into the calculator to determine the required charging current. This calculator helps in designing and setting up ...



### [Guide to Calculating Watts, Volts, and Amps](#)

Learn how to calculate watts, volts, and amps for lithium batteries with simple formulas and examples, ideal for EVs, solar, and energy systems.

### [Guide to Calculating Watts, Volts, and Amps](#)



Learn how to calculate watts, volts, and amps for lithium batteries with simple formulas and examples, ideal for EVs, solar, and ...



### Amps Draw Calculator

An Amps Draw Calculator is an essential tool designed to compute the current draw (in amperes) of an electrical device based on its power consumption and the voltage of ...

### Battery Energy Storage System Electrical Checklist

ESS modules, battery cabinets, racks, or trays shall be permitted to contact adjacent walls or structures, provided that the battery shelf has a free air space for not less than 90% of its length.



### Ohm's Law Calculator

Ohm's law states that the current through a conductor between two points is directly proportional to the voltage across the two points. The law was named after the German physicist Georg ...

### Charging Current Calculator



Enter the battery capacity and the desired charge time into the calculator to determine the required charging current. This calculator ...

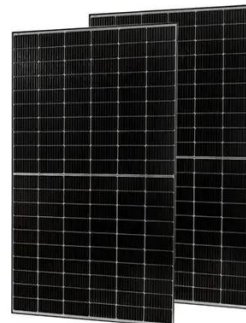


[Calculate Amperes , simple explanation and online ...](#)

An example is choosing the correct battery size for an electronic device. If the battery does not supply enough current, the ...

### [Amp Hours to Amps \(Ah to A\) Conversion Calculator](#)

Convert amp hours to amps (Ah to A) with our conversion calculator. Calculate the average charging or discharging current of a ...



### [Watts/Volts/Amps/Ohms Calculator](#)

Calculates dc power / voltage / current / resistance. Enter 2 values to get the other values and press the Calculate button: Ohm's law calculator . The resistance R in ohms (?) is equal to the ...

### [Current Divider Calculator, Formula, Divider Calculation](#)



A current divider is a configuration in electrical circuits that divides the input current into two or more paths with different impedances. This principle is essential for circuit analysis and ...



### [Watts To Amps Calculator: Convert Watts To Amps \(DC, AC, 3 ...](#)

Converting watts to amps is fairly easy. In most cases, you will have to divide watts by voltage (V) to get amps. The Watts To Amps Calculator will help you with the ...

### [How Many Amps Is A Car Battery?](#)

Reserve capacity is closely tied to Cold Cranking Amps (CCA) and cranking amperes, reflecting the battery's overall endurance under challenging conditions. Prioritizing reserve capacity ...



### [Amps Calculator - Accurate Electrical Measurements](#)

An amps calculator can help you determine the current needed to charge your EV efficiently at home or at charging stations. By inputting the battery capacity and charging ...



## Contact Us

---

For inquiries, pricing, or partnerships:

<https://zawojcsolina.pl>

Phone: +48 22 173 6647

Email: [info@zawojcsolina.pl](mailto:info@zawojcsolina.pl)

Scan QR code for WhatsApp.

