



# How much percent can an solar outdoor power cabinet discharge to at most





## Overview

---

While lithium batteries can handle 80-90% discharge, lead acid should be limited to 50% for maximum lifespan. Regularly check battery water levels (for flooded), keep terminals clean, and ensure proper charging to maximize battery life. Temperature-controlled storage extends.

While lithium batteries can handle 80-90% discharge, lead acid should be limited to 50% for maximum lifespan. Regularly check battery water levels (for flooded), keep terminals clean, and ensure proper charging to maximize battery life. Temperature-controlled storage extends.

The depth of discharge (DoD) is the percentage of the battery's capacity that you can safely use. Most deep-cycle batteries have a recommended DoD of around 50% - 80%. Let's say we're using batteries with a recommended DoD of 50%. This means that if you want to use 2000 Wh of energy per day, you'll.

Oversize your solar array by 20-30% to account for panel degradation (0.5%/year), less-than-ideal conditions, and future expansion. Batteries are the heart of your off-grid system. Choose based on cost, lifespan, maintenance, and performance requirements. Depth of discharge significantly impacts.

The power storage capacity of a solar battery cabinet is typically measured in kilowatt-hours (kWh). This unit represents the amount of energy that the battery can store and deliver over a specific period. Another important concept is the depth of discharge (DoD). The DoD refers to the percentage.

Before you can calculate the battery capacity required for your off-grid cabin, you need to understand your power consumption. This involves identifying all the appliances you will be using and determining their power ratings, as well as tracking the daily usage hours for each appliance. This.

How much can a solar battery discharge?

A solar battery can discharge between 3.6 kilowatt-hours (kWh) to 16 kWh, depending on the battery's size and type. 1. Factors influencing discharge, 2. Typical capacities of residential batteries, 3. Importance of battery management systems, 4. Applications.



Next, consider the depth of discharge (DoD) for your batteries. This indicates how much of the battery's capacity you can safely use. A common DoD is 80%. Therefore, for 4,800 watt-hours requirement, you need at least 6,000 watt-hours of battery storage. Lastly, factor in the autonomy period. This. What is the depth of discharge of a solar battery?

The depth of discharge is the percentage of the battery that has been discharged relative to the total battery capacity. For example, if you discharge 6 kWh from a solar battery with a capacity of 8 kWh, the battery's depth of discharge would be 75% (6 kWh / 8 kWh). WHAT IS THE STATE OF CHARGE?

What is the difference between battery capacity and depth of discharge?

Battery capacity is the total electrical energy supply available from the battery, expressed as a unit of power over time, such as kilowatt-hours (kWh). The depth of discharge is the percentage of the battery that has been discharged relative to the total battery capacity.

How do I calculate battery capacity for my off-grid cabin?

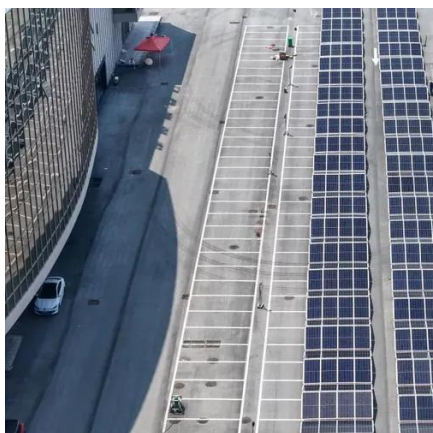
Before you can calculate the battery capacity required for your off-grid cabin, you need to understand your power consumption. This involves identifying all the appliances you will be using and determining their power ratings, as well as tracking the daily usage hours for each appliance.

How do you maintain a solar battery?

Regularly check battery water levels (for flooded), keep terminals clean, and ensure proper charging to maximize battery life. Temperature-controlled storage extends lifespan. Charge controllers regulate power from solar panels to batteries, preventing overcharging. MPPT controllers are essential for off-grid systems.



## How much percent can an solar outdoor power cabinet discharge to a



### [Battery Enclosures & Cabinets](#)

Battery Enclosures & Cabinets Most industrial off-grid solar power sytems, such as those used in the oil & gas patch and in traffic control systems, ...

### [Battery Storage 101: Depth of Discharge](#)

The depth of discharge is the percentage of the battery that has been discharged relative to the total battery capacity. For example, if you ...



LIQUID/AIR COOLING

PROTECTION IP54/IP55

PCS EMS

BATTERY /6000 CYCLES

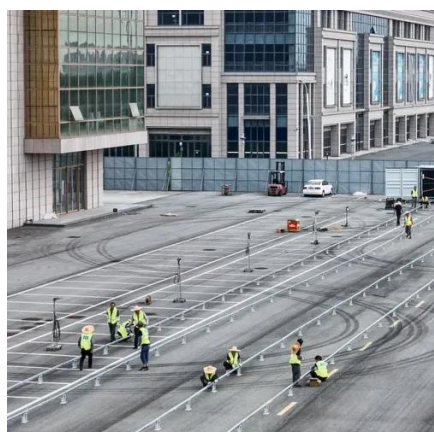
### **Reddit**

We would like to show you a description here but the site won't allow us.

### [How much can a solar battery discharge?..](#)

#### [NenPower](#)

The capacity of discharge for a solar battery is influenced by a variety of elements, critical of which includes the type of battery technology employed. Lithium-ion, sealed lead ...



### [How do I calculate the battery capacity needed for ...](#)

The depth of discharge (DoD) is the percentage of the battery's capacity that you can safely use. Most deep-cycle batteries have a recommended DoD ...

### [How Much Energy Can a Solar Battery Store? A Complete Guide ...](#)

A typical solar battery stores about 10 kWh. This can support critical home systems for around 24 hours during a power outage. To meet higher energy needs,



### [How to Calculate the Battery Capacity for an Off ...](#)

The depth of discharge (DOD) is the percentage of the battery's total capacity that is discharged before recharging. It is important ...



### [How Much Solar Battery Storage Do I Need? A Guide to Sizing ...](#)



Common recommendations for Depth of Discharge state that users should typically discharge solar batteries between 50% and 80%. A DoD of 50% is common for lead-acid ...



### [How much power can a solar generator produce](#)

Most solar generators can provide a reliable source of clean energy, but the amount of power they can produce varies greatly depending on several factors.



### [Battery Backup Reserve: How many leave it at 20%? : r/solar](#)

Discussion of solar photovoltaic systems, modules, the solar energy business, solar power production, utility-scale, commercial rooftop, residential, off-grid systems and more. Solar ...



### [How Much Power Can a Solar Battery Store and What You Need ...](#)

Discover how much power solar batteries can store and their critical role in optimizing your energy use. This article explores different battery types, storage capacities, ...



### [How much can a solar battery discharge? .. NenPower](#)



The capacity of discharge for a solar battery is influenced by a variety of elements, critical of which includes the type of battery ...



### [The Complete Off Grid Solar System Sizing ...](#)

Generally, Lithium batteries have an optimal DOD of 80 to 100%, and Lead-Acid batteries an optimal DOD of 30 to 50%.



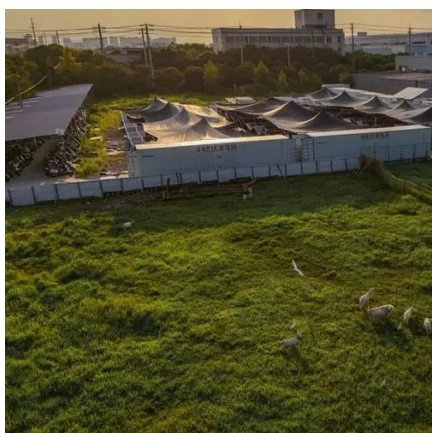
### [How do I calculate the battery capacity needed for a solar power ...](#)

The depth of discharge (DoD) is the percentage of the battery's capacity that you can safely use. Most deep-cycle batteries have a recommended DoD of around 50% - 80%.



### [Outdoor Battery Box Enclosures and Cabinets](#)

AZE's outdoor battery racks and battery enclosures keep your batteries safe from weather, vermin and damage, we have enclosures for wall or floor ...



### [Battery Storage Calculator](#)



Example 1: Solar Panel Backup. Scenario: You have a 15 kWh battery with a depth of discharge of 70%. How much usable storage do you have? Practical impact: With ...



### [Understanding Solar Battery Depth of Discharge](#)

The depth of discharge is a percentage of the electrical energy that can be withdrawn from the battery relative to the total battery ...



### [How to Calculate the Battery Capacity for an Off-Grid Cabin](#)

The depth of discharge (DOD) is the percentage of the battery's total capacity that is discharged before recharging. It is important to avoid discharging the battery to its maximum ...



### [How much electricity can the energy storage cabinet store?](#)

Electricity storage capacity within an energy storage cabinet can be quantified based on several critical factors: 1. Size and specifications of the storage uni...



### [Off-Grid Solar System Calculator For Accurate Sizing](#)



While lithium batteries can handle 80-90% discharge, lead acid should be limited to 50% for maximum lifespan. Regularly check battery water levels (for flooded), keep terminals clean, ...



### [Can A Solar Panel Discharge A Battery? Causes, Reasons, And ...](#)

Yes, solar panels can discharge a battery under certain conditions, especially at night. If there is no blocking diode or if the panel is damaged, electricity

### [Tesla Powerwall 3 Review: The Most Popular ...](#)

We like the Tesla Powerwall 3's power and well-rounded specifications, but it only comes in one size.



Standard 20ft containers



Standard 40ft containers



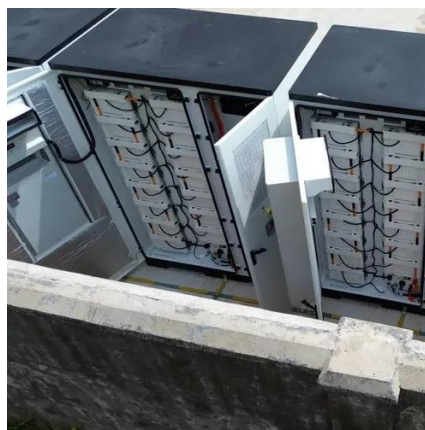
### [How to calculate the power storage capacity needed for a solar ...](#)

By following the steps outlined in this blog post, you can accurately calculate the required power storage capacity and choose the right solar battery cabinet for your needs.

### [How much can a solar battery discharge? .. NenPower](#)



FINAL REMARKS When contemplating the discharge capabilities of solar batteries, it becomes clear how multifaceted the topic ...



### [Understanding Solar Battery Depth of Discharge](#)

The depth of discharge is a percentage of the electrical energy that can be withdrawn from the battery relative to the total battery capacity. For example, if you discharge ...



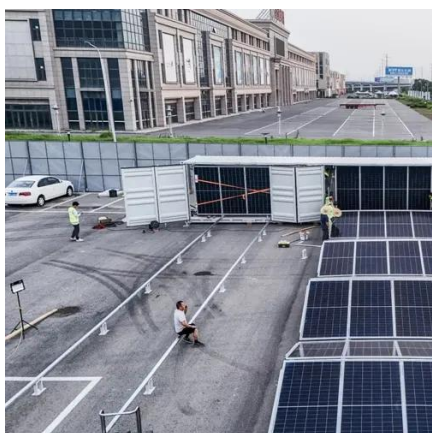
### [Battery Storage 101: Depth of Discharge](#)

Most modern lithium-ion batteries have DoDs ranging anywhere from 80% to 95%, with many best-in-class solutions sporting 100% depth of discharge ...



### [The Complete Off Grid Solar System Sizing Calculator](#)

Generally, Lithium batteries have an optimal DOD of 80 to 100%, and Lead-Acid batteries an optimal DOD of 30 to 50%.



### [Battery Storage 101: Depth of Discharge](#)



The depth of discharge is the percentage of the battery that has been discharged relative to the total battery capacity. For example, if you discharge 6 kWh from a solar battery with a capacity ...



### [Deep Cycle Battery: How Much Can You Discharge? Myths, Best ...](#)

How Much Can You Discharge a Deep Cycle Battery Without Affecting Its Lifespan? You can safely discharge a deep cycle battery to about 50% of its capacity without ...

### [Solar Battery Efficiency: Navigating Depth of ...](#)

Getting the most of Portable Solar Solutions For portable solar products like solar-powered lights or small gadgets, compact lithium-ion ...





## Contact Us

---

For inquiries, pricing, or partnerships:

<https://zawojcsolina.pl>

Phone: +48 22 173 6647

Email: [info@zawojcsolina.pl](mailto:info@zawojcsolina.pl)

Scan QR code for WhatsApp.

