



How much electricity can a 12v250ah battery store





Overview

48V250Ah lithium battery battery capacity in kWh = $(48V \times 250Ah) / 1000 = 12kWh$
12V20Ah AGM battery capacity in kWh = $(12V \times 250Ah) / 1000 = 3kWh$ Therefore, how much electricity a battery can store is fundamentally determined by its kWh capacity. In many cases, it cannot be judged by just Ah.

48V250Ah lithium battery battery capacity in kWh = $(48V \times 250Ah) / 1000 = 12kWh$
12V20Ah AGM battery capacity in kWh = $(12V \times 250Ah) / 1000 = 3kWh$ Therefore, how much electricity a battery can store is fundamentally determined by its kWh capacity. In many cases, it cannot be judged by just Ah.

For instance, a 12V battery with a 500 Ah capacity can store about 6,000 watt-hours (Wh) or 6 kilowatt-hours (KWh) (calculated as 500 Ah x 12 V). This energy can power various devices for long durations. For example, a 100Ah battery can theoretically provide 1 amp of current for 100 hours. However.

25°C (77°F) and then a freshening char 2.8 A7545m 168. 9 5 4 8. 8 5 78.0 B805 81.7 75 3 2 6 apacity, cell consistency, and long-ter ance with IEC t disp ay, Leoch reserve the final right of explanation. LEOCH. All rights reserved.Trademarks and logos are the property of LEOCH and its.

Founded in 1991, Huixin Battery has a production area of 13,000 square meters and a total asset value of more than 15.8 million yuan. We employ more than 20 professional engineers and technical persons. With the Introducing of several International or domestic key equipment and technologies, our.

How much electricity can a battery store?

Electricity storage potential in batteries varies significantly, influenced by several factors: 1. Capacity measured in amp-hours or watt-hours determines the total energy stored, 2. Chemistry type, such as lithium-ion or lead-acid, impacts efficiency and.

Based on this formula, we can start to calculate how many kWh of electricity this 250Ah battery is equivalent to. According to the above picture, we read the battery voltage or the nominal voltage, as 12V. And its battery amp-hours is 250Ah. Then, substituting it into the above formula, we can get.



Battery capacity tells you how much energy a battery can store and deliver over time. It's usually expressed in: To calculate how much energy a battery holds in watt-hours, use: If your battery capacity is in mAh (milliamps), convert it to Ah first: You have a 12V battery rated at 100Ah. So it. How much energy does a 12V 100Ah battery store?

kWh (kiloWatt-hour) or Wh (Watt-hour) is the unit that measures Electrical Energy. A 12V-100Ah battery can store 1200Wh or 1.2kWh of energy, and therefore could be said to have 1.2kWh of energy capacity. If the 100Ah battery is rated at 24 Volts, such as this Ampere-Time battery, it can store 2400Wh or 2.4kWh of energy.

What is a 12V 250ah lithium battery?

12V 250Ah Lithium Battery Is A Deep Cycle Battery To Replace the Lead Acid Battery MANLY Battery supports high-performance 12v 250ah lithium battery With LiFePO4 Technology.

Can a 12V 100Ah battery be used as a power supply?

A 12V 100Ah battery can be used as a power supply for small loads such as PCs, laptops, printers, cell phone chargers, LED lights, and WiFi routers. It has sufficient energy storage capacity for these small loads.

How much energy does a battery hold?

To calculate how much energy a battery holds in watt-hours, use: If your battery capacity is in mAh (milliamps), convert it to Ah first: You have a 12V battery rated at 100Ah. So it stores 1200 watt-hours of energy. If you're powering a 100-watt device:



How much electricity can a 12v250ah battery store

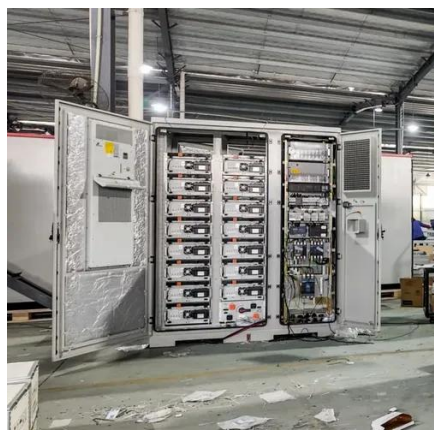


[Battery Run Time Calculator](#)

Calculate battery run time for 12V, 24V, and 48V batteries based on battery capacity & power consumption.

[250AH Battery Datasheet . PDF . Rechargeable ...](#)

The battery has a nominal voltage of 12V, capacity of 250Ah, and is suitable for applications including solar wind systems, lighting systems, and power ...



[How Many Watts Does a 200Ah Battery Have?](#)

Understanding how many watts a 200Ah battery has is essential whether you're setting up a home inverter, planning a solar system, or selecting commercial UPS solutions ...

[12V 250Ah Lithium Battery](#)

Manly Battery has a daily production capacity for battery cells exceeding 1,200,000 and can assemble up to 3,000 batteries per day. 12v 250ah lithium battery is our famous product.



[How Many kWh Does a Solar Battery Hold and How to Choose ...](#)

Solar battery capacity in kWh measures how much electrical energy a battery can store and supply. One kWh represents the energy used by a 1,000-watt appliance running for ...

[Lithium-Ion Battery 12V](#)

Lithium-Ion Battery 12V - 250Ah - 3.2kWh - PowerBrick+ offers a high level of safety with an embedded BMS and use of high quality Lithium cylindrical ...



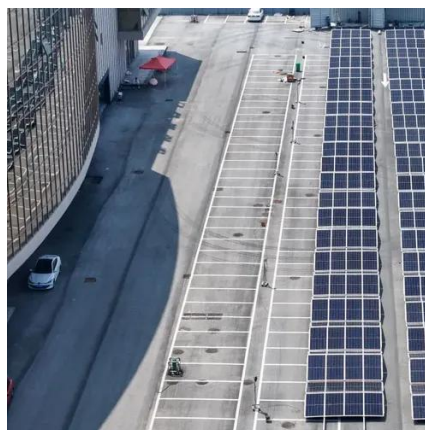
[How Many Watts in 12V 200Ah Battery?](#)

In other words, it tells you how much power the battery can store. A higher Ah rating means that the battery can store more power ...

[250AH Battery Datasheet , PDF , Rechargeable Battery , Energy ...](#)



The battery has a nominal voltage of 12V, capacity of 250Ah, and is suitable for applications including solar wind systems, lighting systems, and power stations.



[Can A 200Ah Battery Run On A 2000 Watt Inverter? Load ...](#)

A 200Ah battery can support a 2000W inverter for about 2.2 hours at full capacity. If you use a 400W appliance, the runtime extends to roughly 11 hours.

[How much electricity can a battery store? .. NenPower](#)

Electricity storage potential in batteries varies significantly, influenced by several factors: 1. Capacity measured in amp-hours or watt-hours determines the t...



[How much electricity can a battery store? .. NenPower](#)

Electricity storage potential in batteries varies significantly, influenced by several factors: 1. Capacity measured in amp-hours or watt ...

[12V250AH \(6-GFM-250\) VRLA Battery](#)



Under the "Rongsheng" and "Huixin" brands, we are producing a range of lead acid batteries, which can be used in solar energy, UPS, ships, electric bicycles, forklifts, the electronics ...



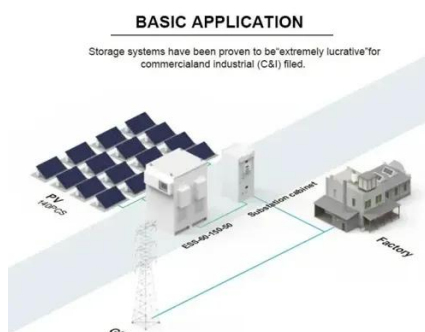
12V250AH (6-GFM-250) VRLA Battery

Under the "Rongsheng" and "Huixin" brands, we are producing a range of ...



Understanding Battery Capacity and Inverter Compatibility

To estimate how long a battery can run an inverter, we need to consider the power draw and the battery's capacity. Using a 100 Ah battery with a 1000W inverter, we perform the ...



12V Storage Battery: How Much Energy is Available, Capacity, ...

A typical 12V storage battery can provide energy ranging from 20 to 100 amp-hours (Ah), depending on the battery type and size. This translates to 240 to 1200 watt-hours ...

LPL SERIES-LONG LIFE STANDBY PLPL12-250 ...



LPL SERIES-LONG LIFE STANDBY P-TITLE
LPL12-250 (12V250Ah) CHARACTERISTICS Item
Rated Voltage Nominal Capacity (25°C)



[How to Calculate Battery Capacity \(Ah, mAh, and Watt-hours\)](#)

This guide will explain what battery capacity means, how to calculate it, and how to convert between units like Ah, mAh, and Wh -- with a calculator to make it all easy.

[12V 250Ah Lithium Battery](#)

Manly Battery has a daily production capacity for battery cells exceeding 1,200,000 and can assemble up to 3,000 batteries per day. 12v 250ah ...



[How much electricity does a 250ah solar cell produce](#)

The concept of amp-hour capacity is fundamental in determining how much energy a solar cell can generate. Amp-hour (Ah) ratings reflect the ability of a battery to provide a ...



[Lithium Battery Watt Hour Calculator: \(mAh / Ah ...\)](#)



Converting battery amp hours to watt-hours will give an idea of how much actual energy your battery can store or deliver. For example, A ...



[LiFePO4 200Ah \(Everything you need to know\)](#)

Let's start with the basics: A 200Ah LiFePO 4 battery is a device used to store and provide electrical energy, consisting of one or ...



[How Much Power Can a 12V Battery Produce?](#)

A 12V battery can produce power measured in watt-hours (Wh), depending on its capacity in amp-hours (Ah). For example, a 12V battery rated at 100Ah can deliver up to 1200 ...



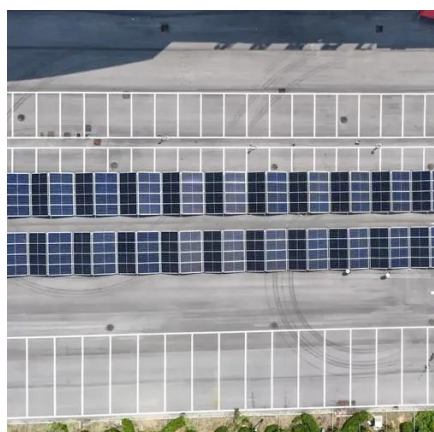
[How much electricity can a 12v250ah battery store](#)

A 12V-100Ah battery can store 1200Wh or 1.2kWh of energy, and therefore could be said to have 1.2kWh of energy capacity. If the 100Ah battery is rated at 24 Volts, such as this Ampere-Time ...

[How many watts of solar energy does a 250a battery produce](#)



To understand how much power a 250Ah (amp-hour) battery can generate from solar energy, it's vital to consider several key factors that influence energy output....

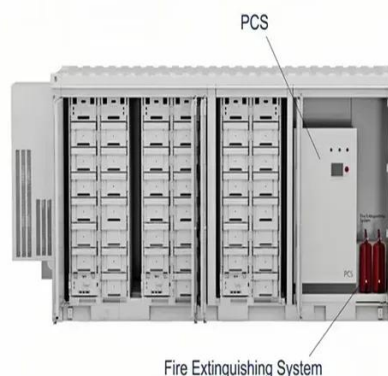


[250Ah to kWh Conversion for Battery](#)

To complete the 250Ah to kWh Conversion for Battery, we first need to find the battery voltage and battery capacity (in Ah) on the battery datasheet. Then according to the datasheet above, ...

[How to Calculate Battery Capacity \(Ah, mAh, and ...\)](#)

This guide will explain what battery capacity means, how to calculate it, and how to convert between units like Ah, mAh, and Wh -- ...



[Battery Amp hours To Watts \(Ah to Watts\) Calculator](#)

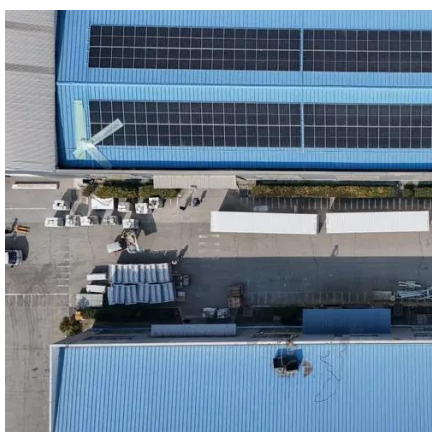
And also converting your 12v battery in watts will give you an idea of how many watts it can store so you can pick the right size solar ...



[Everything About the 200Ah Lithium Battery: A Comprehensive ...](#)



Explore how a 200Ah lithium battery works, how long it lasts, and how to choose the best one for RVs, solar, and backup power applications.



[12V 250Ah Lithium Battery 100A BMS LiFePO4 ...](#)

12V 250Ah Lithium Battery 100A BMS LiFePO4 Marine RV Battery Group 8D Deep Cycle for Trolling Motor, Camper, Trailer, Solar ...



Contact Us

For inquiries, pricing, or partnerships:

<https://zawojcsolina.pl>

Phone: +48 22 173 6647

Email: info@zawojcsolina.pl

Scan QR code for WhatsApp.

