



How much does a grid-connected cabinet cost for a substation in the Middle East





Overview

A solar grid-connected cabinet typically costs between \$3,000 to \$10,000, influenced by various factors such as components quality, installation complexity, and energy requirements.

A solar grid-connected cabinet typically costs between \$3,000 to \$10,000, influenced by various factors such as components quality, installation complexity, and energy requirements.

This article explores the price range for electrical substations, offers a comprehensive cost comparison, and sheds light on the significance of distribution transformers and switchgear within these installations. Electrical substations are critical nodes within the power grid, responsible for.

This article provides a comprehensive guide for Electrical Estimators focused on cost estimation for electrical substations, examining the challenges, methodologies, and innovative techniques that leverage business intelligence to drive accuracy and efficiency. Cost estimation is one of the most.

How much does a solar grid-connected cabinet usually cost?

1. A solar grid-connected cabinet typically costs between \$3,000 to \$10,000, influenced by various factors such as components quality, installation complexity, and energy requirements. One primary aspect impacting the pricing is the system.

Total project ranges: A small, compact distribution substation can start around \$1,000,000 and climb toward \$3,000,000 for modest upgrades. A mid-size station with a 20–40 MVA transformer, modern protection, and concrete yard may run \$3,000,000 to \$8,000,000. Large transmission-level facilities.

This guide provides a transparent look into pricing by capacity, component, and region—equipping engineers, contractors, and procurement teams with accurate insights for 2024 and beyond. What Is a Compact Substation?

A compact substation (also known as a package substation or kiosk substation).

For instance, when quantity = 10; total cost for grounding would be $10 \times 800 =$



\$8,000 for a 10,000sq.ft yard. Predefined cost of \$3,000 suggested. Change it to match actual figures. \$40 per foot assumed. Includes posts and foundations. High-security fence is additional. Modify the above cost.



How much does a grid-connected cabinet cost for a substation in the



[Transmission Cost Estimation Guide](#)

MISO's transmission cost estimation guide for MTEP22 describes the approach and cost data that MISO uses in developing its cost estimates. This document's assumptions and ...

[Primary unit substations design guide](#)

A substation using one or two Air Terminal Chambers (ATCs) is different from a substation using close-coupling on both the primary and secondary sides. An ATC uses a cable connection on ...

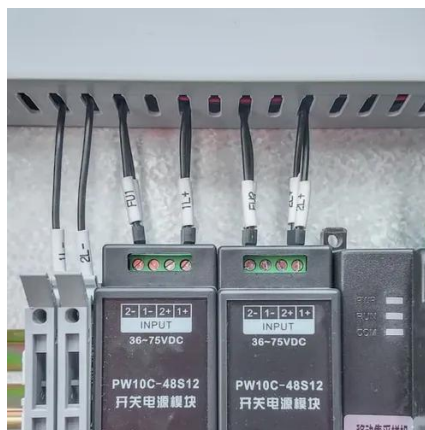


[Attachment_A-Unit_Cost_Guide.xlsx](#)

Unit costs include costs to procure materials, installation, engineering, project management costs, home office costs, and contingency. Unit costs exclude allocated corporate overhead, ...

[Compact Substation Price List](#)

Compare 2024 compact substation price list by capacity, features, and region. Learn what impacts cost and how to choose the right 11kV or 33kV substation for your project.



Photovoltaic Grid Connected Cabinets:

A Middle Eastern textile factory installed photovoltaic grid-connected cabinets to offset daytime power usage. Within the first year, the site reduced grid electricity costs by 35%, ...



National Grid

Costs may also increase over time, with significant increases in costs in the energy sector and related services in recent years. We provide indicative costs both of a "typical connection" ...



Substation cabinets

This article will give you an overall introduction to substation cabinets and how to use it properly, also the precautions tips on the ...

much



(in combinations such as 'as much', 'this much')
Used to indicate, demonstrate or compare the quantity of something.

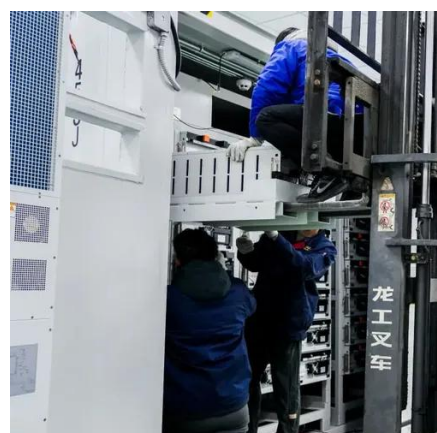


How much does a solar grid-connected cabinet usually cost?

A solar grid-connected cabinet typically costs between \$3,000 to \$10,000, influenced by various factors such as components quality, installation complexity, and energy ...

COST ESTIMATING METHODOLOGIES FOR ...

In fact, new overhead transmission lines can cost \$1 million or more per mile. The process of building transmission and substation level projects often takes many years--even in the most ...



The basic things about substations you MUST ...

To explain in very simple words, I would say that substation is a bunch of electrical devices gathered and connected in one place.

MUCH , English meaning



MUCH definition: 1. a large amount or to a large degree: 2. a far larger amount of something than you want or need.... Learn more.



[How Much Does It Cost to Build a Substation?](#)

Deconstruct the true cost of an electrical substation, analyzing how voltage, engineering complexity, and long-term operations affect the budget.

[Substation Cost Estimator , PEguru](#)

A comprehensive tool to determine the cost of building a substation or any small portion of it. All material cost is populated. Input quantity for an estimate.



[Price Range for Electrical Substations Cost Comparison](#)

This article explores the price range for electrical substations, offers a comprehensive cost comparison, and sheds light on the significance of distribution transformers and switchgear ...



much



a great quantity, measure, or degree: not much to do; He owed much of his success to his family. a great, important, or notable thing or matter: He isn't much to look at.

INTEGRATED DESIGN
EASY TO TRANSPORT AND INSTALL,
FLEXIBLE DEPLOYMENT

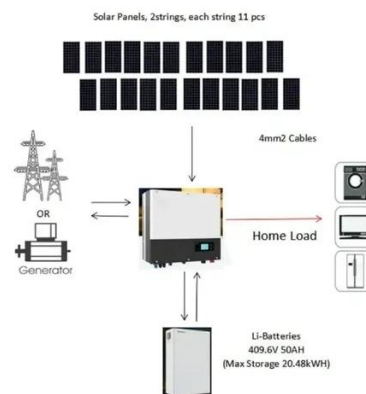


How Middle East Energy Transition Will Stimulate

Introduction The energy and electricity landscape in the Middle East (ME) is in a midst of transition as climate change, and energy security concerns took center hold in 2022. Extreme ...

MUCH Definition & Meaning

The meaning of MUCH is great in quantity, amount, extent, or degree. How to use much in a sentence.



Much

Much is used as an adjective or adverb, but it always means a large quantity, extent, or degree. When something hurts very much, it's very painful, and when your friend says your gift is very ...

The Connections Charging Process , National Grid



There are certain charges in the connections process that will be associated with the cost of connecting to the transmission system. If you apply to ...



[A Comprehensive Guide to Prefabricated Substations](#)

Prefabricated substation 1) What is a prefabricated substation? A prefabricated electric substation is an electric unit assembled within a factory and sealed in a protective ...

[Pacific Gas and Electric Company's Unit Cost Guide](#)

Pacific Gas and Electric Company's Unit Cost Guide Updated: March 2025 In accordance with Attachment A to Decision D.16-06-052 Unit Cost Guide represents facilities generally required ...



[Photovoltaic Grid Connected Cabinets:](#)

A photovoltaic grid-connected cabinet helps your solar system connect safely to the grid, stabilize energy output, and reduce power costs. Whether for residential, commercial, or ...



Contact Us

For inquiries, pricing, or partnerships:

<https://zawojcsolina.pl>

Phone: +48 22 173 6647

Email: info@zawojcsolina.pl

Scan QR code for WhatsApp.

