



How many watts of solar energy per square meter at noon





Overview

What is solar panel watts per square meter (W/M)?

Solar panel watts per square meter (W/m) measures the power output of a solar panel based on its size. Compare solar panels to see which generates most electricity per square meter. A higher W/m value means a solar panel produces more power from a given area. This can help you determine how many solar panels you need for your energy needs.

How much solar power does a square meter get?

This first map shows the yearly average, in kilowatt-hours per square meter for an average yearly day. Translation: At high noon on a clear day, each square meter receives 1000 watts of solar power. If you look at the large yellow areas, you will see that it gets around 6,000 watts on an average day.

How much power does a solar panel get a day?

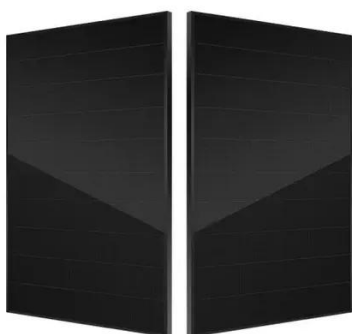
Translation: At high noon on a clear day, each square meter receives 1000 watts of solar power. If you look at the large yellow areas, you will see that it gets around 6,000 watts on an average day. So, even though the average day is exactly 12 hours, the power you actually get on your panels is equal to about 5 to 6 hours of full sun per day.

How many Watts Does a solar panel use per square foot?

The average solar panel's wattage per square foot is 15 watts, though high-efficiency panels can achieve 20+ watts per square foot. Standard residential panel dimensions are approximately 17.5 square feet (6.5' × 3.25'), while commercial panels typically measure around 21 square feet.



How many watts of solar energy per square meter at noon



[Solar Energy Information and Diagram](#)

The solar power density at the equator on a bright day at noon is about 1000 watts per square meter. This value is called the "standard sun". It is used in the industry for rating efficiency ...

[How many watts of solar energy per square meter . NenPower](#)

On average, solar irradiance at the Earth's surface ranges between 1000 to 1200 watts per square meter under ideal conditions. However, actual values can vary significantly ...



many determiner

Definition of many determiner in Oxford Advanced Learner's Dictionary. Meaning, pronunciation, picture, example sentences, grammar, usage notes, synonyms and more.

[MANY definition and meaning . Collins English Dictionary](#)

You use many to indicate that you are talking about a large number of people or things. I don't think many people would argue with that. Not many films are made in Finland. Do you keep ...



[Guide To Peak Sun Hours](#)

For example, Illinois averages 3 - 4 peak sun hours per day. During this time, your solar panels will get close to 1,000 watts of solar ...



[Solar Energy Per Square Meter: How Much Power Can You Get?](#)

This article explores solar energy per square meter and the various factors that influence energy output, such as location, climate, and panel efficiency. It provides crucial ...



many

Many, innumerable, manifold, numerous imply the presence or succession of a large number of units. Many is a popular and common word for this idea: many times. Numerous, a more ...

[Power Per Square Meter Calculator](#)



Solar Energy Potential: On average, Earth's surface receives about 1,000 watts of solar power per square meter under direct sunlight. Wind Turbines: Modern wind turbines can ...



[US Solar Insolation Maps](#)

Translation: At high noon on a clear day, each square meter receives 1000 watts of solar power. If you look at the large yellow areas, you will see that it gets around 6,000 watts on an average day.

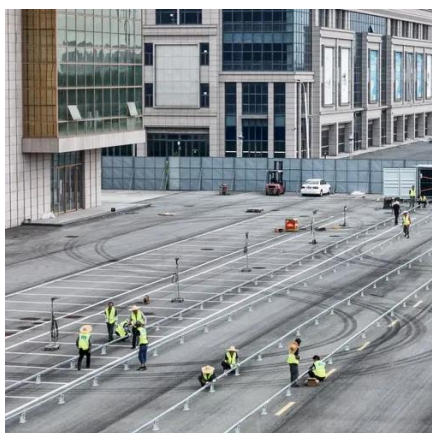
[MANY Definition & Meaning , Dictionary](#)

MANY definition: constituting or forming a large number; numerous. See examples of many used in a sentence.



Many

A large number of persons or things: "For many are called, but few are chosen" (Matthew 22:14).



[Solar Panel Output Per Square Meter](#)



Discover how much electricity solar panels generate per square meter, explore efficiency factors, technology comparisons, and future innovations in photovoltaic energy.



[Peak Sun Hours Calculator \(by address, city, or zip ...\)](#)

In fact, peak sun hour describes an hour of exposure to direct sunlight with an intensity reaches an average of 1000 watts per square ...

[Solar energy - Explaining Science](#)

However, the main issue is that countries which could generate the most solar energy (particularly those in Africa) actually have modest ...



[How much does a solar panel actually produce?](#)

By using a fixed set of conditions, all solar panels can be more accurately compared and rated against each other. There are three standard test ...



[US Solar Insolation Maps](#)



Translation: At high noon on a clear day, each square meter receives 1000 watts of solar power. If you look at the large yellow areas, you will see ...

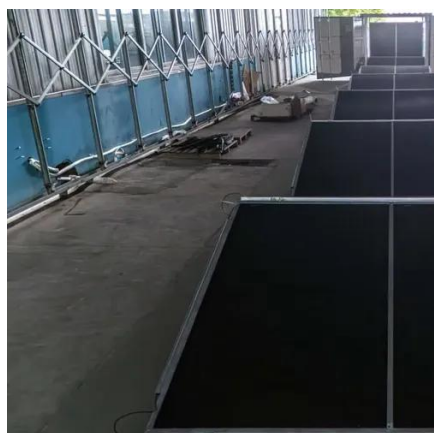


[How much is the average actual power can a solar panel rating ...](#)

However, even on a cloudy day, a solar panel will still generate some electricity. Solar panels are typically rated for their maximum power output under standard test conditions (STC). STC ...

[many , meaning of many in Longman Dictionary of Contemporary ...](#)

many meaning, definition, what is many: a large number of people or things: Learn more.



[Power Per Square Meter Calculator](#)

Power per square meter calculations are vital for designing and evaluating solar panels, assessing the heating efficiency of radiators, and analyzing the illumination levels of ...

[Solar Irradiance by Zip Code Calculator](#)



Solar Irradiance Definition Solar irradiance is the power per unit area (surface power density) received from the Sun in the form of electromagnetic radiation in the wavelength range of the ...





Contact Us

For inquiries, pricing, or partnerships:

<https://zawojcsolina.pl>

Phone: +48 22 173 6647

Email: info@zawojcsolina.pl

Scan QR code for WhatsApp.

