



How big a solar cell is needed for 70 watts





Overview

By inputting your energy consumption details, this calculator can provide you with an estimate of how many solar panels you'll need to cover your energy needs.

By inputting your energy consumption details, this calculator can provide you with an estimate of how many solar panels you'll need to cover your energy needs.

Solar panel size is measured in watts (W) and indicates how much electricity the panel can produce under standard test conditions. Here's the key distinction every homeowner should understand: Most residential solar panels in 2025 come in three main configurations: The most common choice for.

The size of solar panels varies depending on the number of photovoltaic (PV) cells they include. Each cell adds to the panel's total voltage and power output. The most commonly used cell layouts are 60-cell, 72-cell, and 96-cell panels. Let's consider their main features and purpose: 60-cell solar.

Many portable solar panels for RV are in the 100 to 300 watt range. The physical size of the panels often correlate to the watts, the bigger the panels the more watts it can generate. Here are the sizes for some of the more popular portable solar panels. Portable panels are undergoing numerous.

The Solar Panel Size Estimator Calculator is a tool designed to help you determine the appropriate size of solar panels needed for your specific energy requirements. By inputting your energy consumption details, this calculator can provide you with an estimate of how many solar panels you'll need.

Individual solar cells are typically 5" x 5", or 6" x 6". Most brands employ the larger size however, SunPower uses 5-square inch cells, enabling them to increase power yet reduce overall dimensions. A rectangle is the most efficient and practical shape; it is perfect for configuring the required.

Each solar cell measures about 6 inches square, though dimensions can vary slightly between manufacturers. When these cells are arranged into panels and surrounded by a protective frame, glass, and backing materials, you get the standard solar panel dimensions used in residential and commercial. How many Watts Does a portable solar panel generate?



Solar panels for homes average 250 to 400 watts. Many portable solar panels for RV are in the 100 to 300 watt range. The physical size of the panels often correlate to the watts, the bigger the panels the more watts it can generate. Here are the sizes for some of the more popular portable solar panels.

How much wattage should a solar panel have?

When considering solar panel sizes and wattage, you'll typically find options ranging from 250 to 400 watts. Opting for higher wattage units can be a game-changer, especially for those with limited roof space.

How much energy does a 60 cell solar panel use?

A typical US home consumes 877 kWh monthly. To replace everything with solar, you need a 6.5 kWh solar panel. 60 cell solar panels come in different sizes, ranging from 285 watts to 375 watts. For example: The solar cells vary, but the size of the individual cells are always 6 x 6 inches.

What size solar panels do I Need?

As you can see from the chart earlier, portable solar panels are more varied in size. A good rule of thumb is portable panels for RVs are in the 32 x 62 inch range, sufficient for any camper. They're also lighter than standard solar arrays so it won't stress your RV roof. Please keep in mind that size should not be your only consideration.



How big a solar cell is needed for 70 watts



[A Complete Guide to Solar Panel Size . 8MSolar](#)

Residential solar installations usually use 60-cell panels, which have become the industry standard for home energy systems. These panels measure approximately 65 inches ...

[Understanding Solar Panel Sizes and Wattage: A Complete Tutorial](#)

For example, a standard 60-cell module measures about 65 inches by 39 inches, while a larger 72-cell unit is approximately 77 inches by 39 inches. These dimensions are ...

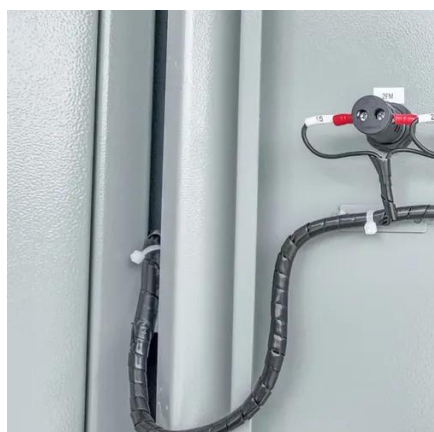


[Detailed Guide to Solar Panel Size & Dimensions](#)

Looking to install solar panels? Learn about solar panel dimensions, wattage, cell types, and how to calculate the system size for ...

[What Size Charge Controller You Need \(Calculated\)](#)

See also: What A Solar Charge Controller Does (Explained) Ideal For Simple Systems PWM charge controllers are available in 10 A, 20 A, and 30 A capacities and are ...



[Solar Panel Size Guide \(with 4 Charts\)](#)

By inputting your energy consumption details, this calculator can provide you with an estimate of how many solar panels you'll need to ...

[3-In-1 Solar Calculators: kWh Needs, Size, Savings, Cost, Payback](#)

Combined, these solar panel calculators will give you an idea of how big a solar system you need, how many kWh per year will it generate, how much you'll save by switching to solar in the ...



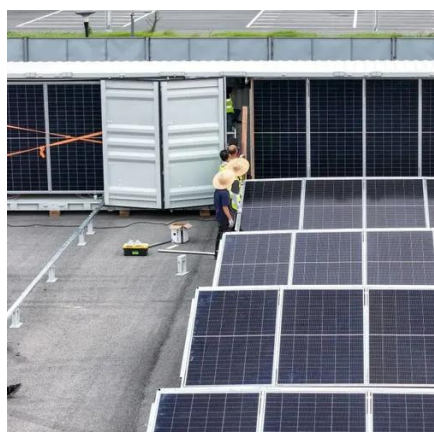
[Solar Panel Size Calculator - Estimate Panel Width](#)

The Solar Panel Size Estimator Calculator is a tool designed to help you determine the appropriate size of solar panels needed for your ...

[MPPT charge controller calculator: Find the right ...](#)



MPPT Size Calculator The MPPT calculator has 6 input fields that will describe your solar energy system: 1- Solar panel wattage: This ...

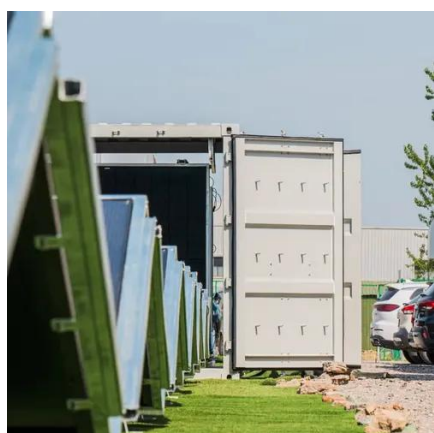


[How Many kWh Does A Solar Panel Produce Per ...](#)

Quick outtake from the calculator and chart: For 1 kWh per day, you would need about a 300-watt solar panel. For 10kW per day, you would need ...

[The Ultimate Guide to Solar Panel Size, Weight & Wattage \(2025\)](#)

Standard residential solar panels are typically around 5.8 feet long by 3.5 feet wide and weigh between 40 to 50 pounds. However, the exact dimensions depend heavily on the ...



Solar Calculator

Calculate how much power you need with these solar calculators to estimate the size and the cost of the solar panel array needed for your home energy usage.

[3-In-1 Solar Calculators: kWh Needs, Size, ...](#)



Combined, these solar panel calculators will give you an idea of how big a solar system you need, how many kWh per year will it generate, how ...



[How Big of a Solar Panel Do I Need to Run Lights?](#)

How big of a solar panel do you need to run lights? The answer depends on the type of light, the wattage of the bulb, and the number of ...



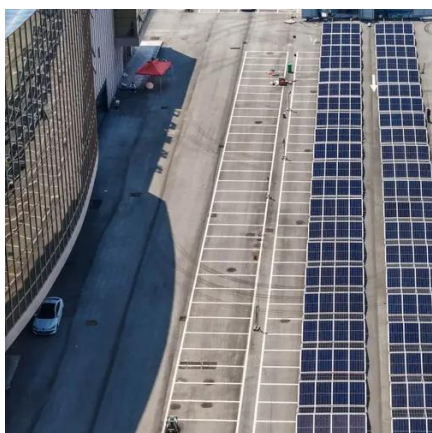
[Solar Panel Size & Dimensions Guide 2025 . Complete Specs](#)

In this comprehensive guide, you'll learn everything you need to know about solar panel sizing, from standard dimensions to weight considerations, helping you determine the ...



[What Size Solar Panel To Charge 100Ah Battery? \(Calculator\)](#)

Chart Of What Size Solar Panel Is Needed To Charge Your 100Ah 12V Battery. We have calculated what size solar panel you need to charge any 100Ah battery in 1, 2, 3, ... 20 peak ...



[The Complete Off Grid Solar System Sizing ...](#)



Using your daily energy usage and Peak Sun Hours, and assuming a system efficiency of 70%, the calculator estimates the ...



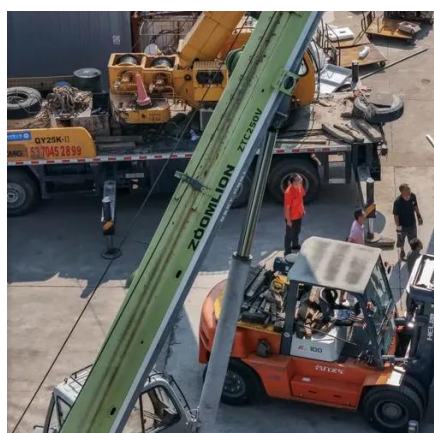
[Solar Panel Size Calculator - Estimate Panel Width](#)

By inputting your energy consumption details, this calculator can provide you with an estimate of how many solar panels you'll need to cover your energy needs. This tool is ...



[What Size Solar Panel Do I Need to Charge a 12v Battery for Off ...](#)

Discover the right solar panel size to efficiently charge your 12V battery. Learn how to calculate wattage, consider battery capacity, and optimize your solar charging setup for maximum ...



[Wattage Calculator for Solar Panel: Equation](#)

The size rating for each solar array usually goes from about 100 watts to as much as 3,000 watts or higher. To successfully use a solar panel system, ...

[What Size Solar Panel Do I Need to Charge a 12v ...](#)



Discover the right solar panel size to efficiently charge your 12V battery. Learn how to calculate wattage, consider battery capacity, and optimize ...



[Solar Panel Size Guide \(with 4 Charts\)](#)

Many portable solar panels for RV are in the 100 to 300 watt range. The physical size of the panels often correlate to the watts, the bigger the panels the more watts it can generate. Here ...



[Solar Panel Size Calculator: What Size Panel Do I Need?](#)

Calculate what size solar panel you need to charge a lithium or lead acid battery with our free solar panel ...



[How to Size a Solar System \[Step-by-Step Guide\]](#)

Once you have your final array size, simply divide by the wattage of your desired solar panels to figure out how many panels you need. Using our example of a 7.2 kW (7,200-watt) array for ...



[Solar Panel Dimensions: Average Size Explained](#)



Residential and commercial properties favor 60 and 70-cell solar panels, with 250 - 350-watts output. Watts represents the unit's theoretical power production.



[Solar Panel Wattage Calculator](#)

Use our solar panel wattage calculator to find out! If you want to reduce your house's electricity cost and see whether it's worth shifting to solar power, ...

[Solar System Size Calculator: How Much Solar Do ...](#)

Use our free solar system size calculator to estimate how much solar you need for your house. Quickly calculate how many solar ...





Contact Us

For inquiries, pricing, or partnerships:

<https://zawojcsolina.pl>

Phone: +48 22 173 6647

Email: info@zawojcsolina.pl

Scan QR code for WhatsApp.

