



Field operation user external cabinet 10kW





Field operation user external cabinet 10kW

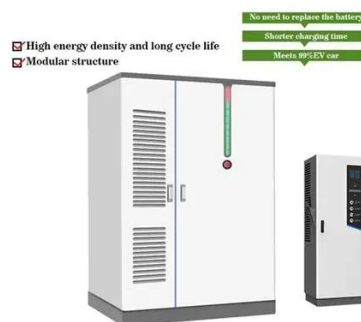


[Vertiv\(TM\) Liebert® GXT5 UPS](#)

With unity power factor (1.0), it allows more connected loads saving space and costs. This 230V in/ 230 out single phase UPS has scalable runtime options with matching external battery ...

[User 's and installation guide](#)

1 How to read this manual	
.....	7 1.1
Safety-related signs.	
.....	7 ...



SRT10KXLT

Schneider Electric USA. SRT10KXLT - APC Smart-UPS On-Line, 10kVA/10kW, Tower, 208V, 4x L6-20R+2x L6-30R NEMA outlets, Network Card+SmartSlot, Extended runtime, W/O rail kit.

[User's and installation guide](#)

This manual contains important instructions that you should follow during installation and maintenance of the UPS and batteries. Please read all instructions before operating the ...



GVSUPS10KB4FS

Highly efficient, easy-to-deploy 10kW, 208V 3-phase UPS that brings best-in-class power protection and low total cost of ownership to edge, small and medium data centers, as well as ...



[Product Data Sheet \(PDF\): L-828/L-829 Ferroresonant ...](#)

Compliance and Applications Certified to FAA AC 150/5345-10 (Current Edition) Our L-828 / L-829 Constant Current Regulator is used to provide power to airfield lighting systems. It offers a ...



[Liebert EXM Modular UPSs , Vertiv Backup Power ...](#)

The Vertiv Liebert EXM UPS provides efficient and economical operation with a flexible power system offering scalable and redundant features ...



TAB 2024-1



The intelligent design of the BE Quick Block FM 10kW without or without additional modules can deliver the redundancy and performance of a full 1+1 system for a much-reduced initial ...

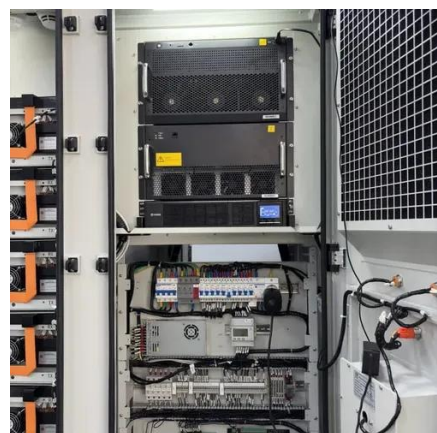


[LIEBERT VERTIV GXT5 INSTALLER/USER ...](#)

View and Download Liebert Vertiv GXT5 installer/user manual online. Vertiv GXT5 ups pdf manual download.

SRT10KRMXLT

Schneider Electric USA. SRT10KRMXLT - APC Smart-UPS On-Line, 10kVA/10kW, Rackmount 6U, 208V, 4x L6-20R+2x L6-30R NEMA outlets, Network Card+SmartSlot, Extended runtime, ...



[User 's and installation guide](#)

Please read all instructions before operating the equipment and save this manual for future reference. This is a product for commercial and industrial application in the second ...

GVSUPS10KB4FS



Schneider Electric USA. GVSUPS10KB4FS - Galaxy VS UPS 10kW 208V, 1 internal 9Ah smart modular battery string, expandable to 4, Start-up 5x8.



Liebert ITA2 External Battery Cabinet System

The EBC System consists of (2) 2U cabinets per string (total 4U per string) and provides the Liebert ITA2 UPS with extended battery runtimes. It is easy to install and operate.

GVSUPS10KRFS

Highly efficient, easy-to-deploy 10 kW, 208 V 3-phase UPS that brings best-in-class power protection and low total cost of ownership to edge, small and medium data centers, as well as ...



STOCK CABINET UNIT HEATERS

CABINET: The cabinet shall be of heavy duty cold-rolled steel. The heater front covers shall be securely attached to the cabinet with a maximum of two slotted head style spring latches ...

Vertiv Liebert GXT5 UPS



The UPS system is easy to deploy and maintain due to its user-friendly LCD interface and remote management capabilities supported by the Vertiv RDU101 communications card which makes ...



User's Guide

SW112 INT/EXT: INTERNAL position: The Power knob controls the power level. EXTERNAL position: The power level is controlled by a user supplied 0-10V signal applied to P-REF 1 and 2 of ...

[10KW PLC distribution cabinet-LED Display Distribution Cabinet](#)

10KW PLC distribution cabinet The PLC intelligent power distribution box is equipped with PLC as the interlligent control unit along with monitoring sensors to reslize the external environment ...



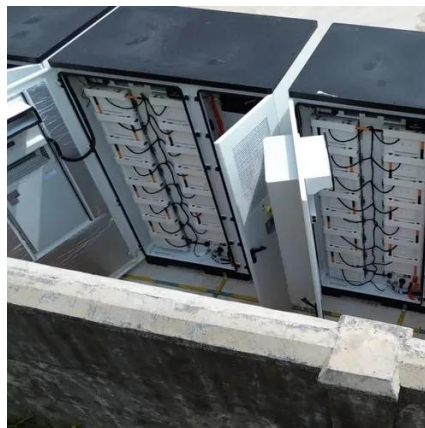
[APC Symmetra PX Operation Manual 208V \(10kW ...](#)

APC Symmetra PX Operation Manual 208V (10kW - 80kW) - Free download as PDF File (.pdf), Text File (.txt) or read online for free. APC Symmetra ...

[Vertiv\(TM\) Liebert® GXT5 UPS](#)



With unity power factor (1.0), it allows more connected loads saving space and costs. This 230V in/ 230 out single phase UPS has scalable runtime ...



[Vertiv Liebert EXS from 10 to 80 kVA](#)

Vertiv™ Life™ Services remote diagnostics and preventive monitoring (Premier Warranty)
Important note: These Service Programs do not cover internal or external batteries, or other ...



[Liebert ITA2 External Battery Cabinet System](#)

The EBC System consists of (2) 2U cabinets per string (total 4U per string) and provides the Liebert ITA2 UPS with extended battery runtimes. It is ...



[EATON 91PS UPS USER AND INSTALLATION MANUAL , ManualsLib](#)

Installing UPS external battery cabinet and battery power cabling The battery cabinet type for the 91PS/93PS 8-10 kW UPS is EBC-H. The UPS uses 32 battery blocks per string.



[EATON 91PS USER AND INSTALLATION MANUAL Pdf ...](#)



View and Download Eaton 91PS user and installation manual online. 8-40 kW. 91PS ups pdf manual download. Also for: 93ps, 93ps-15, 93ps-20, 93ps-30, 93ps-40, 91ps-8, 91ps-10, 91ps ...

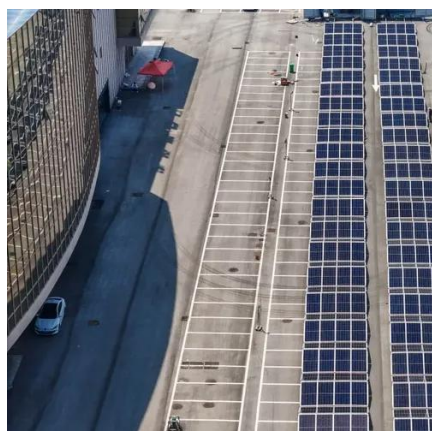
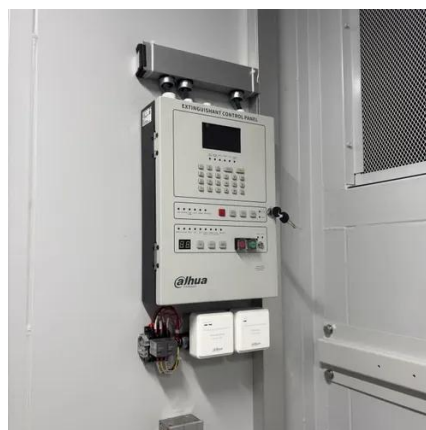


External Type Cabinets

External Type Cabinets offer durable, weather-resistant enclosures for safeguarding critical telecom and network equipment outdoors. Designed for security and efficient organization, ...

Army Field Feeding Systems

Program Program Description: Description: The The Food Food Sanitation Sanitation Center Center (FSC) (FSC) provides provides the the sanitation sanitation capability capability ...



10KW Electric Load Bank

Remote Operation: Some 10kW models support remote control via wired or wireless connections, allowing safe operation from a distance during high-power tests. Safety Interlocks: Features ...

GVSUPS10KFS



Highly efficient, easy-to-deploy 10kW, 208V 3-phase uninterruptible power supply (UPS) that brings best-in-class power protection to edge, small and medium data centers, as well as to ...

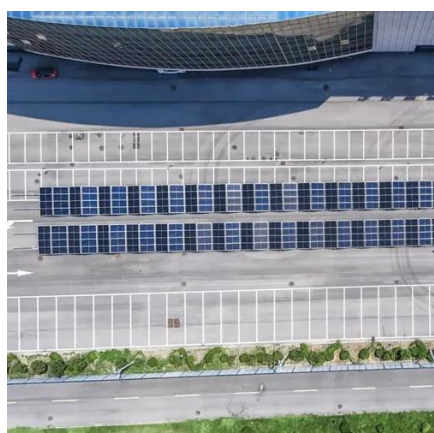


[TECHNICAL MANUAL OPERATOR'S MANUAL FOR](#)

A WARNING or CAUTION will apply each time the related step is repeated. Prior to starting any task the WARN-INGS or CAUTIONs included in the text for that task must be reviewed and ...

[Fronius Symo GEN24 Plus 10kw 3p Hybrid User Guide](#)

Discover the comprehensive operating instructions for the Fronius Symo GEN24 Plus 10kw 3p Hybrid inverter. Learn about installation, data communication, FAQs, and safety measures for ...



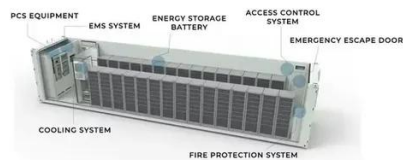
[Manuals & instructions](#)

Operating manuals and installation instructions for our products & solutions.

Liebert®



Innovative design layout and process greatly increase product reliability. Operation and display panel with model-specific color LCD offers simple configuration and control of the UPS. ECO ...





Contact Us

For inquiries, pricing, or partnerships:

<https://zawojcsolina.pl>

Phone: +48 22 173 6647

Email: info@zawojcsolina.pl

Scan QR code for WhatsApp.

