



Energy storage power station ccu control enable





Overview

This article discusses key aspects of energy storage system control systems, explores technical challenges and emerging trends, and highlights how effective business intelligence and data analytics can drive enhanced decision-making in the electric power generation.

This article discusses key aspects of energy storage system control systems, explores technical challenges and emerging trends, and highlights how effective business intelligence and data analytics can drive enhanced decision-making in the electric power generation.

The energy storage power station is dynamically distributed according to the chargeable/dischargeable capacity, the critical over-charging ES 1# reversely discharges 0.1 MW, and the ES 2# multi-absorption power is 1.1 MW. The system has rich power of 0.7MW in 1.5-2.5 s. What happens when energy storage.

In order to solve the problem of variable steady-state operation nodes and poor coordination control effect in photovoltaic energy storage plants, the coordination control strategy of photovoltaic energy storage plants based on ADP is studied. Establish the photovoltaic energy storage power station.

Carbon capture, utilisation and storage (or “CCUS”) technologies can play an important role in this transformation in three ways: First, retrofitting carbon capture technologies is an important solution to avoid the “lock-in” of emissions from the vast fleet of existing fossil-fuelled power plants.

What are the control strategies for energy storage power stations?

1. The control strategies for energy storage power stations encompass various techniques aimed at optimizing performance and reliability, including: 1) Real-time monitoring systems, 2) Advanced predictive algorithms, 3) Demand.

That's essentially what an energy storage station control system does daily - but with megawatts instead of felines. As the backbone of modern energy storage, these digital maestros coordinate everything from battery whispers to grid-roaring power discharges. Let's crack open this technological.



Energy management systems (EMSs) are required to utilize energy storage effectively and safely as a flexible grid asset that can provide multiple grid services. An EMS needs to be able to accommodate a variety of use cases and regulatory environments. 1. Introduction Energy storage applications can. Can photovoltaic energy storage power stations be controlled efficiently?

At the same time, the coordinated control problem of multiple voltage and reactive power resources was fully considered. By establishing an optimal voltage control model, precise control of the power station voltage was achieved, significantly improving the coordinated control effect of photovoltaic energy storage power stations.

When a photovoltaic energy storage power station is under coordinated control?

When a photovoltaic energy storage power station is under coordinated control, the photovoltaic energy storage power station shall be set for a fixed period of time in order to ensure the safety of the photovoltaic energy storage power station being connected to the power grid (Wang et al., 2021).

Can CCUS be used in low-carbon power systems?

Targeted policy measures, like the 45Q and 48A tax credits in the United States, will be critical to realise the potential of carbon capture technologies in power generation. The role of CCUS in low-carbon power systems - Analysis and key findings. A report by the International Energy Agency.

What is the optimal energy storage power of photovoltaic energy storage?

The optimal energy storage power of photovoltaic energy storage power station is obtained based on the real-time data such as the charge state of the storage system. This paper constructs an optimal voltage control model through ADP algorithm and obtains the optimal coordinated control strategy.



Energy storage power station ccu control enable



[What are the control strategies for energy storage power stations](#)

The control strategies for energy storage power stations encompass various techniques aimed at optimizing performance and reliability, including:
1) Real-time monitoring ...

[Powerwall - Home Battery Storage . Tesla](#)

Powerwall is a home battery that provides whole-home backup and protection during an outage. See how to store solar energy and sell to the grid to earn credit.



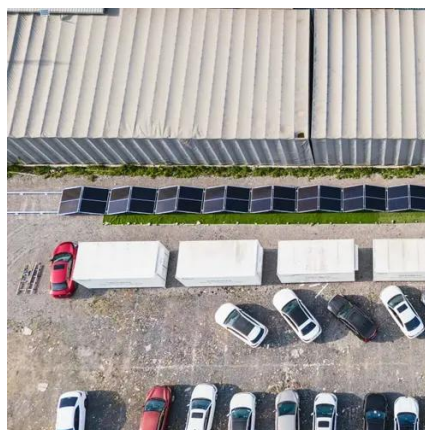
[CHAPTER 15 ENERGY STORAGE MANAGEMENT SYSTEMS](#)

Rodrigo authored research papers on the subjects of control of energy storage systems and demand response for power grid stabilization, power system state estimation, and detection of ...

[What are the control strategies for energy storage](#)

...

The control strategies for energy storage power stations encompass various techniques aimed at optimizing performance and ...



[What is an energy storage power station? , NenPower](#)

In summary, energy storage power stations stand at the confluence of efficient energy use, environmental stewardship, and ...

[Coordinated control strategy of multiple energy storage power stations](#)

Due to the disordered charging/discharging of energy storage in the wind power and energy storage systems with decentralized and independent control, sectional energy storage ...



[Q& A: Carbon capture and storage](#)

1. What is carbon capture and storage (CCS)?
2. What is BECCS?
3. What is DACCS?
4. What is carbon capture and utilisation (CCU)?
5. How much CO2 can be captured by CCS?
6. How ...

[What equipment does an energy storage power station need?](#)



Energy storage power stations require a variety of specialized equipment to ensure efficient and reliable operation. 1. Energy storage technologies, 2. Power co...



Government cabinet paves way for carbon capture ...

The German government cabinet has approved a draft law that would allow the underground storage of CO2 and enable its large-scale ...

What systems does the energy storage power ...

As global reliance on renewable energy intensifies, energy storage systems will undoubtedly continue to evolve, becoming more ...



Energy storage power station ccu control enable

Smart grid technologies and advanced control systems have the potential to enable better integration and management of energy storage systems in nuclear power plants.

What is an energy storage power station ...



Energy storage power stations offer an essential service in modern energy systems, becoming integral to achieving sustainable, ...



[Potential for Carbon Capture Utilization, and Storage](#)

Carbon capture, utilization, and storage (CCUS) technology may contribute to achieving these targets. This study aims to reduce uncertainties related to the development and potential of ...

[Energy management strategy of Battery Energy Storage Station ...](#)

In recent years, the use of large-scale energy storage power supply to participate in power grid frequency regulation has been widely concerned. The charge and discharge cycle ...



[Mastering Energy Storage Control Systems](#)

This article discusses key aspects of energy storage system control systems, explores technical challenges and emerging trends, and highlights how effective business intelligence and data ...

[The Brain Behind Energy Storage: How Control Systems Power Modern Stations](#)



As the backbone of modern energy storage, these digital maestros coordinate everything from battery whispers to grid-roaring power discharges. Let's crack open this ...



[Ørsted eyes CCU and S at Danish biomass CHP ...](#)

Ørsted A/S is planning to establish carbon capture at two of its Danish biomass-fired combined heat and power plants.

[Two-Stage Optimization Strategy for Managing ...](#)

Considering the randomness of new energy output such as scenery and the electricity consumption on the load side, the increase in the installed proportion of new energy will also ...



LPR Series 19' Rack Mounted

[Coordinated control strategy of photovoltaic energy storage power](#)

By establishing an optimal voltage control model, precise control of the power station voltage was achieved, significantly improving the coordinated control effect of ...



[Typical unit capacity configuration strategies and their control](#)



This study introduces innovative capacity configuration strategies for M-GES plants, namely Equal Capacity Configuration (EC) and Double-Rate Capacity Configuration ...



[What does the energy storage power station control?](#)

1. Energy storage power stations perform several vital functions: 1, they regulate energy supply and demand for grid stability, 2, ...

[The role of CCUS in low-carbon power systems - Analysis](#)

Batteries and other forms of energy storage are being further developed and deployed, but carbon capture, utilisation and storage technologies are also part of the portfolio ...



[Power Plant Controller \(PPC\) , Hitachi Energy](#)

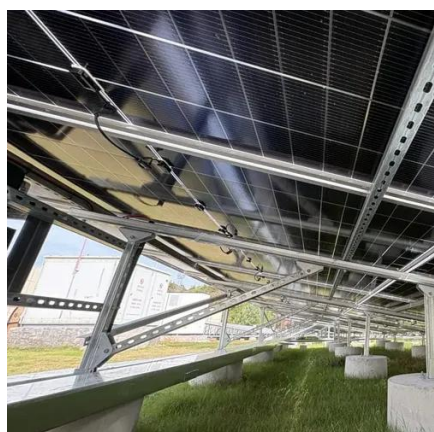
Learn how to achieve unparalleled renewable and storage power management with the Hitachi Energy Power Plant Controller.



[Research on Control Strategy of Energy Storage Power Station ...](#)



This paper considers the relationship between the control strategy of energy storage converter and the action of relay protection device, and studies the control strategy of energy storage ...



[Top 5 energy storage BMS companies in China in ...](#)

This article is aimed at providing you with details on China's Top 5 energy storage BMS companies, including the development ...



Contact Us

For inquiries, pricing, or partnerships:

<https://zawojcsolina.pl>

Phone: +48 22 173 6647

Email: info@zawojcsolina.pl

Scan QR code for WhatsApp.

