



# Does the voltage of solar battery cabinet lithium battery pack need to be balanced





## Overview

---

When should a battery be balanced?

Balancing should be done whenever a significant difference in cell voltages is observed. Regular monitoring of cell voltages is recommended to ensure optimal battery performance. If you have a BMS, they will already come with a balancer. Most of the time this is a low current balancer.

How to balance lithium batteries in parallel?

Balancing lithium batteries in parallel involves measuring each battery's voltage before connection, ensuring they're within an acceptable range of each other, and then connecting all positive and negative terminals together. [What Does It Mean For Lithium Batteries To Be Balanced?](#)

.

What is balancing lithium battery packs?

Balancing lithium battery packs, like individual cells, involves ensuring that all batteries within a system maintain the same state of charge. This process is essential when multiple battery packs are used together in series or parallel configurations.

What is battery balancing?

Battery balancing is the process of equalizing the charge among individual cells within a battery or between batteries in a group to maintain consistent voltage levels and state of charge (SOC). This ensures that no cell is overcharged or undercharged, helping to prevent performance issues, capacity loss, and a shortened battery lifespan.



## Does the voltage of solar battery cabinet lithium battery pack need to



### [Lithium battery cabinet voltage requirements](#)

Next, we need to configure the voltage and capacity settings of the lithium battery energy storage system to meet the application requirements. Adjust voltage thresholds and capacity limits to ...

### [How many volts does a lithium battery solar panel](#)

...

To effectively power a solar panel system, a lithium battery typically requires a voltage range of 12V, 24V, or 48V, depending on the ...



### [High Voltage Solar Energy Storage LiFePO4 ...](#)

JZH Rack / Cabinet Type Energy Storage Lithium Battery (LiFePO4) is integrated by the High Quality LFP (LiFePO4) Prismatic Cell (square ...

### [3. Battery bank wiring](#)

Battery unbalance can be detected by looking at the midpoint voltage of a battery bank. If the midpoint voltage is monitored, it can be used to ...



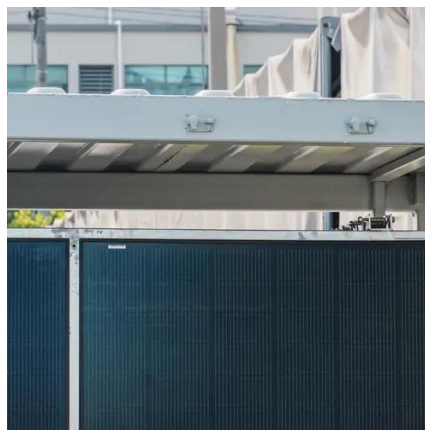
### [Do Lithium Batteries Need to Be Balanced?](#)

Balancing is a critical aspect of lithium battery management, necessary for ensuring safe, efficient, and reliable operation. By equalizing cell voltages, balancing helps prevent ...



### [How to Balance Lithium Batteries in Parallel](#)

Regular checks and measurements of each battery pack's voltage can help ensure that all are charging and discharging evenly. The more symmetrical and even the ...



### [How to Balance Your Lithium Battery Pack During Installation](#)

Balancing a lithium battery pack during installation is critical to ensure all cells have the same voltage, which prevents damage and optimizes battery life and performance.



### [Battery Voltage vs. Panel Voltage: Can Your Battery Voltage Be ...](#)



Use a charge controller or a voltage regulator to balance the system. These devices manage charging requirements and prevent potential damage to the battery. This ...



### [48V Lithium Battery Pack Maintenance Guide: Unlock the ...](#)

The 48V lithium battery pack, with its high energy density and long cycle life, is the "energy heart" of storage systems, electric vehicles, solar setups, and more.

### [How to keep lithium batteries in series balanced? : r/SolarDIY](#)

I have the majority of my batteries connected in parallel first, then I connect them in series to get the voltage I need. Batteries really like being connected in parallel.



### [Does each lithium battery pack need to be connected in series](#)

Are lithium-ion batteries wired in series? In fact, every battery pack we sell consists of a collection of cells that have been wired in series (and often in parallel, too). In this guide, we'll walk you ...



### [Help in balancing cells in new 48v battery , DIY Solar Power Forum](#)



Keep charging it and reducing current every time it cuts off due to cell high voltage until the cells all achieve the same voltage - somewhere between 3.55v and 3.65v. (1 week to ...)



### [Battery Balancing: Techniques, Benefits, and How It Works](#)

Not all battery chemistries require balancing, but balancing is essential for lithium-ion batteries and other multi-cell systems where consistent charge across cells is crucial for performance ...



### [Techniques for Balancing Batteries-Improve ...](#)

Learn everything about balancing batteries, why it's important, and how to balance batteries properly to extend their lifespan and improve safety.



### [Battery Balancer Guide: Boost Battery Performance & Lifespan](#)

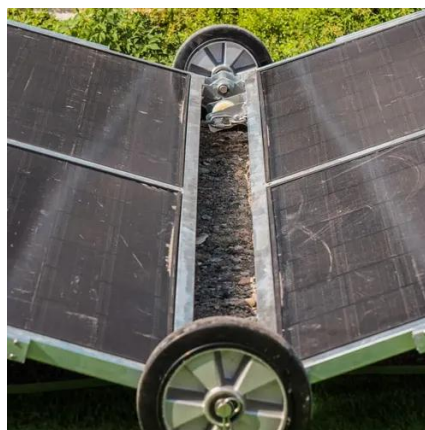
Battery balancers ensure stable voltage across all cells in a lithium battery pack, improving performance, lifespan, and safety. In applications from EVs and solar storage to ...



### [How to Build Your Own Battery Pack: A Step-by-Step Guide](#)



What is a DIY battery pack? A DIY battery pack is a custom-built energy storage solution created by connecting multiple individual battery cells, typically lithium-ion cells like 18650s, to meet ...



### [How many volts does a lithium battery solar panel require?](#)

To effectively power a solar panel system, a lithium battery typically requires a voltage range of 12V, 24V, or 48V, depending on the configuration and specific application.

### [How to Balance Lithium Batteries in Parallel](#)

Regular checks and measurements of each battery pack's voltage can help ensure that all are charging and discharging evenly. The ...



### [How to Check Battery Cell Voltage](#)

Learn how to check battery cell voltage safely and accurately with expert-approved steps and the best tools.

### [Guide to Battery Cabinets for Lithium-Ion Batteries: 6 Essential](#)



How long should a lithium-ion battery cabinet withstand a fire? A lithium-ion battery storage cabinet should withstand an internal fire for at least 90 minutes, in compliance with ...

### Support Customized Product



### [How to Balance Lithium Batteries with Parallel BMS?](#)

How to Connect Lithium Batteries in Parallel Safely? In order to prevent potential hazards and optimize battery performance, it is ...

### [Active vs. Passive Balancing: A Guide to LiFePO4 Cells](#)

Does balancing work with the voltage reading of the battery cell? Yes, balancing works by monitoring and adjusting the voltage of individual cells to ensure they all have equal ...



### [Does the lithium battery pack need a charger](#)

Does A Lithium Ion Battery Need Float Charging To properly charge a lithium-ion battery, it is essential to use a charger specifically designed for lithium-ion batteries. Follow the ...



### [3. Battery bank wiring](#)



Battery unbalance can be detected by looking at the midpoint voltage of a battery bank. If the midpoint voltage is monitored, it can be used to generate an alarm when it deviates beyond a ...





## Contact Us

---

For inquiries, pricing, or partnerships:

<https://zawojcsolina.pl>

Phone: +48 22 173 6647

Email: [info@zawojcsolina.pl](mailto:info@zawojcsolina.pl)

Scan QR code for WhatsApp.

