



# Distributed Energy User Cabinet Rack Type





## Overview

---

The rack-type energy storage system supports user-side energy response scheduling and remote duty operation and maintenance, supports parallel/off-grid operation, and can be widely used in data centers, communication base stations, charging stations, small and medium-sized.

The rack-type energy storage system supports user-side energy response scheduling and remote duty operation and maintenance, supports parallel/off-grid operation, and can be widely used in data centers, communication base stations, charging stations, small and medium-sized.

Modern Smart Rack Cabinets have been reimagined as intelligent power nodes—bridging the gap between facility distribution and in-rack devices. They deliver circuit-level visibility, predictive alerts, and integration with Building Management Systems (BMS) to directly reduce downtime and improve.

RackPower Intelligent Power Distribution Units address controlling power on Cabinets as well as Open Frame Racks and Wall-Mount enclosures. Design your power solution using a variety of configuration options. The units are available in horizontal 19-. If the portfolio of pre-configured items does.

energy management, namely, Distributed Energy (DE). The growing access to and obtainability of renewable energy sources, smart meter tech, and climate-induced regulation and policy facilitati arbitrage mode and stable power quality management. CATL's electrochemical energy storage products have.

The rack-type energy storage system supports user-side energy response scheduling and remote duty operation and maintenance, supports parallel/off-grid operation, and can be widely used in data centers, communication base stations, charging stations, small and medium-sized distributed new energy.

Each PDU type—basic, metered, monitored, and switched—offers unique features for reliability and control. Industry data shows that better power management with the right PDU can prevent up to 80% of outages and improve operational performance by 25%. NBYOSUN provides certified, high-quality power.

Every rPDU (Rack Power Distribution Unit) released by Delta is a result of our total



commitment to engineering the most efficient and reliable power solutions on the market. They can be trusted for reliable power distribution while also offering protection for devices inside the rack. Data centers.



## Distributed Energy User Cabinet Rack Type



### [Rack Power Distribution , Schneider Electric USA](#)

Metered-by-outlet Rack Power Distribution Units (Rack PDU) provide real-time remote monitoring at the outlet level to provide advanced data center energy management.

### [Key Differences Between Cabinet Power Distribution Units ...](#)

Compare cabinet power distribution unit types--basic, metered, monitored, and switched--to choose the best fit for your data center's power needs.

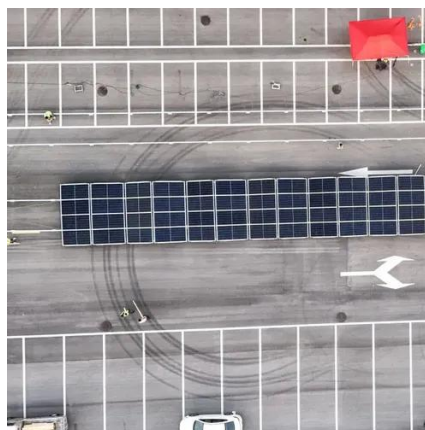


### [Rack Power Distribution Unit \(rPDU\)](#)

With the use of a Delta rPDU, energy flows steadily to every device inside a rack cabinet. Protection, optimized power distribution, and intelligent management begin with Delta rPDUs ...

### [Is the Rack Header Cabinet Obsolete?No-Meet the Smart Rack ...](#)

Modern Smart Rack Cabinets have been reimagined as intelligent power nodes --bridging the gap between facility distribution and in-rack devices. They deliver circuit-level ...



### Is the Rack Header Cabinet Obsolete?No-Meet the Smart Rack Cabinet

Modern Smart Rack Cabinets have been reimagined as intelligent power nodes --bridging the gap between facility distribution and in-rack devices. They deliver circuit-level ...



### Distributed energy storage cabinet design

What is distributed energy storage? The application described as distributed energy storage consists of energy storage systems distributed within the electricity distribution system and ...



### How To Choose The Right Rack Cabinet For Your Data Centre

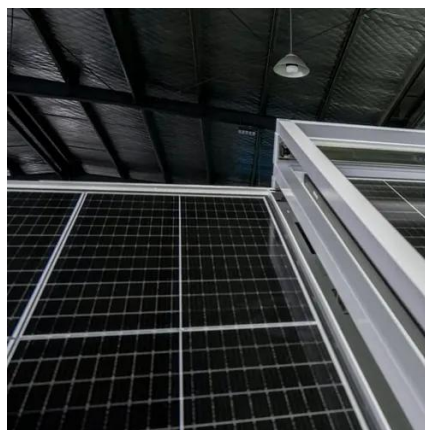
In this guide, we'll show you how to pick the best rack cabinet for your needs -- from size and airflow to power and safety -- so your data center stays reliable and ready to grow.



### Introduction to distributed energy storage cabinets



The rack-type energy storage system supports user-side energy response scheduling and remote duty operation maintenance, supports parallel/off-grid operation, and can be widely used in ...



### [Cabinet & floor standing PDU solutions](#)

Beyond the capabilities of a power strip, a rack PDU offers a range of intelligent features to help control the power distributed to IT devices. Rack PDUs are used in 120V, 200-240V and other ...

### [Cabinet Energy Storage](#)

The rack-type energy storage system supports user-side energy response scheduling and remote duty operation and maintenance, supports parallel/off-grid operation, and can be widely used ...



### [RackPower Intelligent Power Distribution Units , nVent DATA ...](#)

RackPower Intelligent Power Distribution Units address controlling power on Cabinets as well as Open Frame Racks and Wall-Mount enclosures. Design your power solution using a variety of ...

### [RackPower Intelligent Power Distribution Units](#)



RackPower Intelligent Power Distribution Units address controlling power on Cabinets as well as Open Frame Racks and Wall-Mount enclosures. ...





## Contact Us

---

For inquiries, pricing, or partnerships:

<https://zawojcsolina.pl>

Phone: +48 22 173 6647

Email: [info@zawojcsolina.pl](mailto:info@zawojcsolina.pl)

Scan QR code for WhatsApp.

