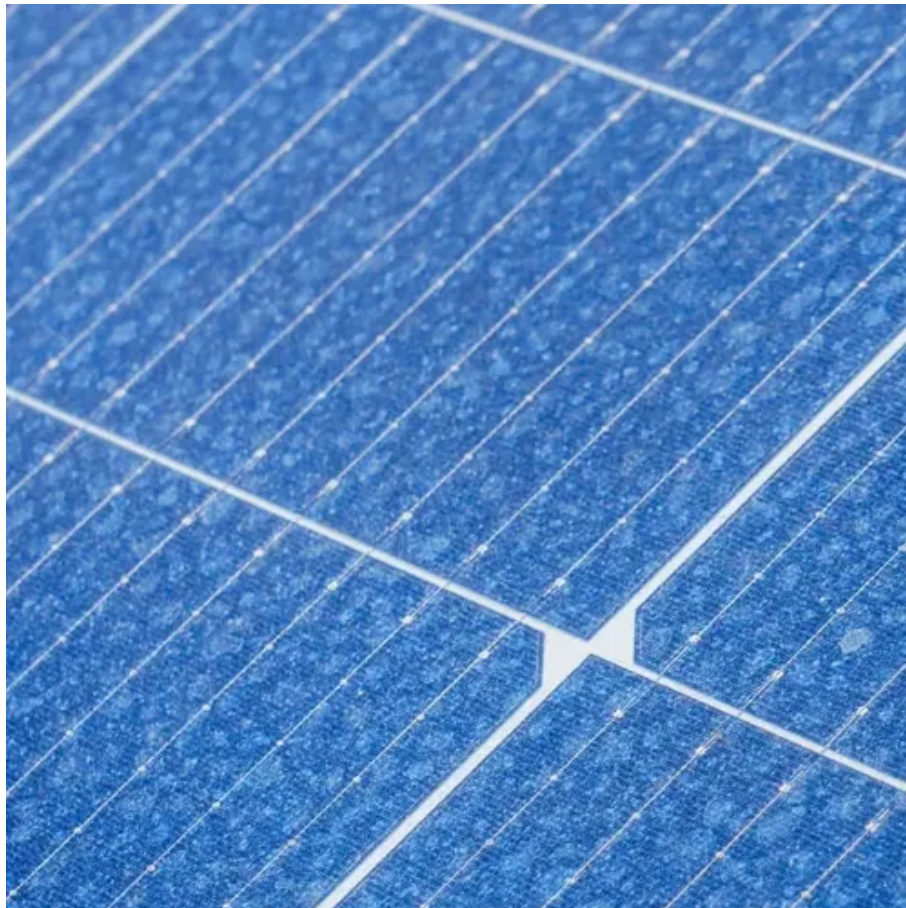




Configuration Scheme for 1000mm Deep Server Racks in Oilfields





Overview

Despite having the ability to customize with a rack builder, it's crucial to understand the unique dynamics of each data center. Our server rack configurator offers an extensive selection of acce.



Configuration Scheme for 1000mm Deep Server Racks in Oilfields



[Xtreme 24U IP54 Server Racks 600mm Wide 1000mm Deep](#)

The Xtreme 24U IP54 Server Rack is a 25U high, 600mm wide and 1000mm deep free standing server rack from Server Room Environments for use in industrial computer ...

[Xtreme 12U IP54 Server Racks 600mm Wide 1000mm Deep](#)

The Xtreme 12U IP54 Server Rack is a 47U high, 600mm wide and 1000mm deep free standing server rack from Server Room Environments for use in industrial computer rooms, datacentres ...



[How to Rack a Server: Step-by-Step Guide & Best ...](#)

Learn how to rack a server with this detailed step-by-step guide. Includes setup tips, cable management, cooling, and safety practices.



[Server Rack Layout Best Practices -- Data Room ...](#)

Adhering to server rack layout best practices is essential in ensuring the optimal arrangement of equipment, which significantly ...



[Server Rack Installation Guide for Efficient Data ...](#)

Unlock the full potential of your data center with our server rack installation guides. Improve efficiency, organization, and scalability with expert advice ...

[NSR 47U Server Racks 800mm Wide 1000mm Deep](#)

A 47U NSR range server rack for applications requiring an 800mm wide by 1000mm deep rack with an internal depth of 870mm and mesh doors, single at the front and wardrobe at the rear.



[Server Rack Sizes: The Complete Guide to Standard, Custom, ...](#)

Below is a comprehensive, fully detailed guide covering all standard server rack sizes, form factors, height considerations, depth classifications, and best-practice configuration ...

[Create a rack diagram with the best FREE Network ...](#)



How to create a simple Rack Diagram Creating a rack diagram is an important step to having sustainable good cable management in the ...



[42U Colocation Server Racks 600mm Wide ...](#)

A 42U colocation server rack to separate and secure client servers in a data centre 600mm wide and 1000mm deep. Available with 2, 3 or 4 bay ...



[Server Rack Installation Guide for Efficient Data Centers](#)

Unlock the full potential of your data center with our server rack installation guides. Improve efficiency, organization, and scalability with expert advice for seamless setups



[42U server rack with glass door 600x1000x2000mm \(WxDxH\)](#)

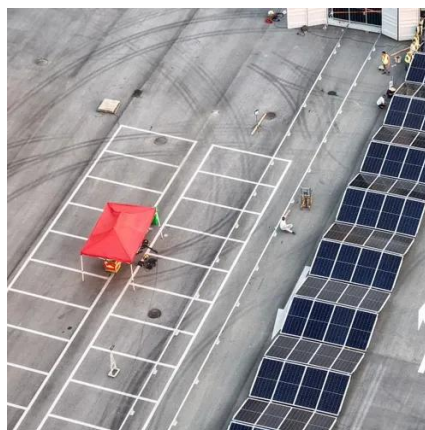
Buy 42U server rack with glass door 600x1000x2000mm (WxDxH) The server cabinet specialist! Fast delivery Competitively priced Good support (chat / telephone)



[How to Setup a Server Rack: Tips and Tricks {Step ...](#)



This article outlines the steps to setup a server rack and offers the tips and tricks for securely building the rack.



[Xtreme 12U IP54 Server Racks 600mm Wide 1000mm Deep](#)

The Xtreme 12U IP54 Server Rack is a 47U high, 600mm wide and 1000mm deep free standing server rack from Server Room Environments for use in industrial computer ...

[How Deep Should My Server Rack Cabinet Be? A ...](#)

Airflow, cable space, and power distribution units (PDUs) all come into consideration when determining how deep you should design ...



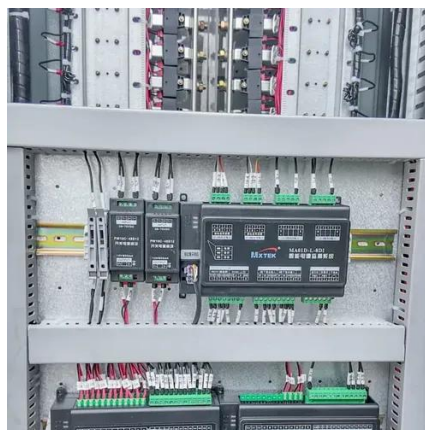
[Rack-Basics-White-Paper-English](#)

Although 19-inch racks are always the same nominal width, the height and depth vary. The depth of the rack rails is usually adjustable to some degree. The height of the rack is divided into ...

[How Deep Should My Server Rack Cabinet Be? A Complete Guide](#)



Airflow, cable space, and power distribution units (PDUs) all come into consideration when determining how deep you should design your server rack. Let's examine ...



[Server Rack Layout Best Practices -- Data Room Equipment ...](#)

Adhering to server rack layout best practices is essential in ensuring the optimal arrangement of equipment, which significantly contributes to the overall effectiveness and ...

[NSR 36U Server Racks 800mm Wide 1000mm Deep](#)

Buy the NSR 39U server rack 600mm wide 1000mm deep with mesh doors online from Server Room Environments for use in computer rooms, offices, IT facilities and data centres.

FLEXIBLE SETTING OF MULTIPLE WORKING MODES



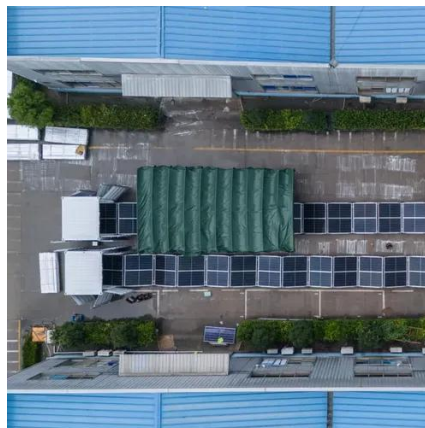
[Xtreme 12U IP54 Server Racks 600mm Wide ...](#)

The Xtreme 12U IP54 Server Rack is a 47U high, 600mm wide and 1000mm deep free standing server rack from Server Room ...

[Guidelines for Server Rack Layouts and Designs](#)



The experts at DataSpan have compiled important guidelines for server rack layouts and design. Contact us for more information on how to design server racks.



[Guidelines for Server Rack Layouts and Designs](#)

The experts at DataSpan have compiled important guidelines for server rack layouts and design. Contact us for more information on ...



Contact Us

For inquiries, pricing, or partnerships:

<https://zawojcsolina.pl>

Phone: +48 22 173 6647

Email: info@zawojcsolina.pl

Scan QR code for WhatsApp.

