



# Comparison of Low-Pressure Outdoor Cabinets for Wastewater Treatment Plants





## Overview

---

This popular guide to the important elements that must be considered in the design of wastewater treatment works was revised (May 2016) to reflect the need for resiliency in the face of storm surge and extreme weather.

This popular guide to the important elements that must be considered in the design of wastewater treatment works was revised (May 2016) to reflect the need for resiliency in the face of storm surge and extreme weather.

It focuses on preventing the two most common failure modes: water ingress from high-pressure washdowns and corrosion from environmental exposure. The dominant constraint is maintaining the enclosure's seal integrity throughout the equipment's lifecycle. For an OEM engineer or system integrator.

Our weather-resistant outdoor enclosures are the ideal choice if the control cabinets are to be installed directly next to the wastewater treatment plant. Perfect for large sewage treatment plants or existing machine rooms: We supply the technology - control unit, compressor and stepper motors -.

The purpose of this document is to assist developers and design firms with successfully completing wastewater designs for proposed developments. This guide offers a standard set of templates that are proposed for wastewater system designs and outlines the minimum submittal information considered to.

The following standards are for the design of interim wastewater treatment systems, permanent wastewater treatment systems, and lift stations to be dedicated to GBRA and/or operated by GBRA. Please review the following guidelines carefully and contact GBRA for a consultation meeting to address any.

This popular guide to the important elements that must be considered in the design of wastewater treatment works was revised (May 2016) to reflect the need for resiliency in the face of storm surge and extreme weather. The manual was completely revised in 2011 to reflect current practices and to.

Onsite Wastewater Treatment and Disposal Systems Manual (PDF) - This manual provides supplemental and new information for wastewater treatment professionals in the public and private sectors, expanding upon the design manual



listed below. Design Manual: Onsite Wastewater Treatment and Disposal. Who needs a wastewater treatment plant design guide?

The guide is written for engineers who design wastewater treatment plants, state regulators who review and approve designs, and municipalities that are soliciting professional design services for wastewater treatment facilities. The 2016 revision adds key concepts and criteria related to flooding, storm-surge, and extreme weather.

Does the wastewater treatment Engineering & Design Manual contain standards?

It does not contain standards for those systems, nor does it contain pertinent rules or regulations Wastewater Treatment Engineering and Design resources for industry professionals including technology fact sheets and EPA manuals.

What are the requirements for a low voltage RTU cabinet?

Provide control circuits in low voltage panel for RTU cabinet. L. Heater: 1500 watt minimum, 120 VAC, single phase, with thermostat and tip-over switch. Heater shall be portable floor type. Provide GFCI receptacle for heater. Heater shall be suitable for use in a damp (corrosive) environment.

When should a contractor provide uninterrupted wastewater treatment?

The contractor shall provide for uninterrupted wastewater treatment at all times during construction. Any work involving power outages, bypass pumping, pump and haul, or any other wastewater process interruption must be performed between 8:00am and 5:00pm excluding weekends and holidays.



## Comparison of Low-Pressure Outdoor Cabinets for Wastewater Treatment

---



### [Wastewater Screening & Classification of Screens](#)

...

Wastewater Screening Wastewater Screening is the first unit operation in all wastewater treatment plants. Screen is the device used to ...

### Microsoft Word

These treatment plant operating costs, on a per 1,000 gallon basis, along with the electrical costs for pumping wastewater from the subdivisions to either package treatment plants or regional ...



### [TR-16 Guides for the Design of Wastewater Treatment Works](#)

This popular guide to the important elements that must be considered in the design of wastewater treatment works was revised (May 2016) to reflect the need for resiliency in the face of storm ...

### [Help for Wastewater Treatment Plant Owners and Operators](#)

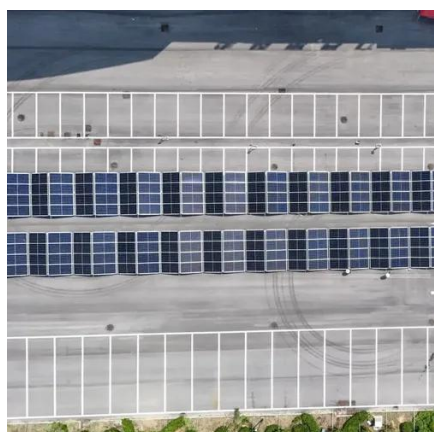
Help for Wastewater Treatment Plant Owners and Operators Learn the advantages and disadvantages, applicability, performance, design criteria, operation and ...



### [HVAC System Design for Waste Water Treatment](#)

...

HVAC system design for a waste water treatment plants (WWTPs) requires careful consideration of the unique environmental ...



### [NEMA 4X Outdoor Cabinet Cooling: A Guide for Engineers](#)

This is the standard for saltwater environments, wastewater treatment plants, and food processing facilities. The critical concept for cooling these enclosures is maintaining a ...



### [Wastewater Low Pressure Design Guide](#)

Several items located in this package can help assist designers in document submittal requirements when preparing proposed wastewater plans and calculations. This guide is ...



### [Municipal Wastewater , US EPA](#)



These systems were designed to convey sewage and wastewater to a treatment plant during dry weather. Under wet weather ...



### [Wastewater Treatment Plants & Collection Systems](#)

3.9 Pressure (STEP and Grinder Pump) and Gravity (STEG) Sewer Systems . 24

### [Key Elements of a Wastewater Treatment Plant](#)

Explore the essential components of a wastewater treatment plant and their roles in maintaining public safety and environmental health. ?? Learn how each section functions effectively!



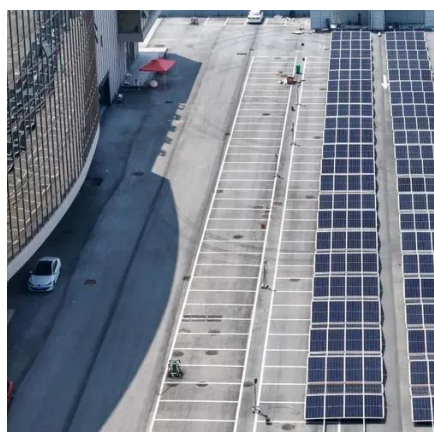
### [Level and Pressure Instrumentation for Wastewater Treatment](#)

Flow-rate measurement in open channels the treatment plant in open collection channels or flumes. Th flow rate is measured at various points in these channels. Measurement of the ...

### [THE ULTIMATE GUIDE TO ENCLOSURE COOLING](#)



NEMA 4X: For indoor or outdoor use, providing protection from extreme weather and climate, and exposure to dust and corrosive materials. This type of enclosure is also watertight and ...



### [Wastewater Treatment Engineering & Design Resources](#)

Design Manual: Onsite Wastewater Treatment and Disposal Systems (PDF) - This design manual provides technical information for those involved in the design, construction, operation, ...

### [Wastewater Treatment Plant Design](#)

Addressing pressure from population growth, climate change, and funding challenges is paramount for the future of wastewater ...



### [HVAC System Design for Waste Water Treatment Plants](#)

HVAC system design for a waste water treatment plants (WWTPs) requires careful consideration of the unique environmental challenges to ensure: 1) safe operation with ...

### [Key Elements of a Wastewater Treatment Plant](#)



Explore the essential components of a wastewater treatment plant and their roles in maintaining public safety and environmental health. ?? Learn how ...



### Wastewater Treatment Facilities

In a wastewater treatment facility, there's always the chance that contaminated water could get splashed onto electrical enclosures, but water resistant NEMACO(TM) electrical enclosures are ...



### Standards and Design Guidelines for Wastewater Treatment ...

Minimum Standards for Interim Wastewater Treatment Plants (5 Years Maximum and up to 100,000 GPD AADF) Interim wastewater treatment systems will be allowed with the ...



### Wastewater Treatment Plants

Wastewater package plants are available in many configurations to achieve different levels of effluent. This includes nutrient removal ...



### Wastewater Treatment Facilities



304 stainless cabinets. Our stainless steel cabinets can house valuable or sensitive materials in your wastewater treatment facility. 304 stainless steel is resistant to corrosion and oxidation ...



### [Standards and Design Guidelines for Wastewater Treatment ...](#)

The following standards are for the design of interim wastewater treatment systems, permanent wastewater treatment systems, and lift stations to be dedicated to GBRA and/or ...



## Contact Us

---

For inquiries, pricing, or partnerships:

<https://zawojcsolina.pl>

Phone: +48 22 173 6647

Email: [info@zawojcsolina.pl](mailto:info@zawojcsolina.pl)

Scan QR code for WhatsApp.

