



# Battery cabinet layout requirements base station





## Overview

---

Address multi-discipline requirements for battery area layout and design. This document addresses architectural, electrical, mechanical, civil, fire protection, and plumbing requirements. Incorporate new and revised industry standards.

Address multi-discipline requirements for battery area layout and design. This document addresses architectural, electrical, mechanical, civil, fire protection, and plumbing requirements. Incorporate new and revised industry standards.

The Unified Facilities Criteria (UFC) system is prescribed by MIL-STD 3007 and provides planning, design, construction, sustainment, restoration, and modernization criteria, and applies to the Military Departments, the Defense Agencies, and the DoD Field Activities in accordance with USD (AT&L).

How should battery racks and cabinets be designed & installed?

Battery racks and cabinets should be designed and installed to meet the requirements for the seismic zone they are installed in. The racks and cabinets should be designed and purchased to accommodate the weight and size of the batteries.

Minimum clearances must be maintained between the cabinets and surrounding building parts/cabinet to accommodate the installation and maintenance of the base station. The following constraints must be considered for cabinet clearances: In line-ups where battery back-up cabinets may be needed, the

Each battery occupies a 3ft x 3ft area and is just over 36 inches tall, which is crucial for planning installation space appropriately. The Base installation team tailors configurations to specific site layouts, ensuring efficiency and compliance. Typically, the Base Power system is installed near.

ers lay out low-voltage power distribution and conversion for a b de ion - and energy and assets monitoring - for a utility-scale battery energy storage system entation to perform the necessary actions to adapt this reference design for the project requirements. ABB can provide support during all.

Industrial battery rooms require careful design to ensure safety, compliance, and



operational efficiency. This article covers key design considerations and relevant standards. 1. Space Planning and Layout 900mm min Battery Room Layout 1200mm Primary Access End Access 1000mm Battery Racks Industrial.



## Battery cabinet layout requirements base station

---



### [NFPA 70E Battery and Battery Room Requirements - NFPA](#)

Safety requirements for batteries and battery rooms can be found within Article 320 of NFPA 70E

### [Utility-scale battery energy storage system \(BESS\)](#)

The main goal is to support BESS system designers by showing an example design of a low-voltage power distribution and conversion supply for a BESS system and its main components.



### [Battery Room Design Requirements - ...](#)

It does not cover maintenance free or computer room type batteries and battery cabinets. Main keywords for this article are Battery Room Design ...

### [Lithium-Ion Battery Charging Safety Cabinet](#)

Justrite's Lithium-Ion Battery Charging Cabinet is engineered to charge and store lithium batteries safely, mitigating common risks during charging.



### FLEXIBLE SETTING OF MULTIPLE WORKING MODES

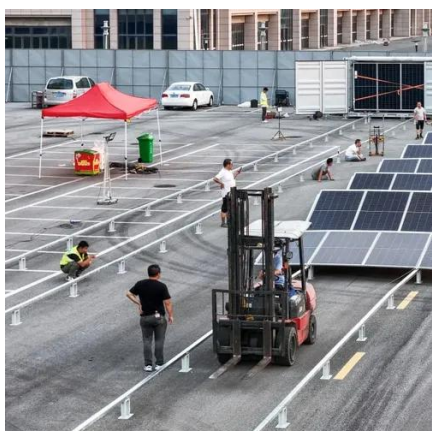


### Battery Room Design Requirements - PAKTECHPOINT

The overall dimensions of the battery room shall permit an orderly layout of the battery rack (s). The racks shall be arranged to facilitate inspection, maintenance, testing, and addition of water.

### UFC 3-520-05 Stationary Battery Areas; replaced by UFC 3...

Provide technical requirements for enclosed battery areas. Address multi-discipline requirements for battery area layout and design. This document addresses architectural, electrical, ...



### Equipment layout and clearances

Minimum clearances must be maintained between the cabinets and surrounding building parts/cabinet to accommodate the installation and ...

### What are the standard requirements for battery ...



When installing battery energy storage cabinets, several considerations should be prioritized to ensure optimal performance and ...



### [Designing Industrial Battery Rooms: Fundamentals and Standards](#)

Industrial battery rooms require careful design to ensure safety, compliance, and operational efficiency. This article covers key design considerations and relevant standards.

### [Utility-scale battery energy storage system \(BESS\)](#)

This reference design focuses on an FTM utility-scale battery storage system with a typical storage capacity ranging from around a few megawatt-hours (MWh) to hundreds of MWh.



### [Battery Cabinets vs. Battery Racks](#)

Cabinet design, by contrast, must address the problem of removing heat as well as any off-gassing from the battery. Cabinet ...

### [The Ultimate Guide to Battery Charging Cabinets:](#)

...



A lithium battery cabinet is designed to protect batteries from overheating, prevent thermal runaway, and contain any potential fires. ...



### [Designing Industrial Battery Rooms: Fundamentals and Standards](#)

Designing Industrial Battery Rooms: Fundamentals and Standards Industrial battery rooms require careful design to ensure safety, compliance, and operational efficiency. This article ...

### [Where can the battery system be installed? What are the ...](#)

Each battery occupies a 3ft x 3ft area and is just over 36 inches tall, which is crucial for planning installation space appropriately. The Base installation team tailors configurations to specific ...



### [Choosing the Right Battery Storage Cabinet: A ...](#)

Before selecting a lithium battery charging cabinet, evaluate your specific operational needs, charging habits, and site layout. ...



### [Cooling for Mobile Base Stations and Cell Towers](#)

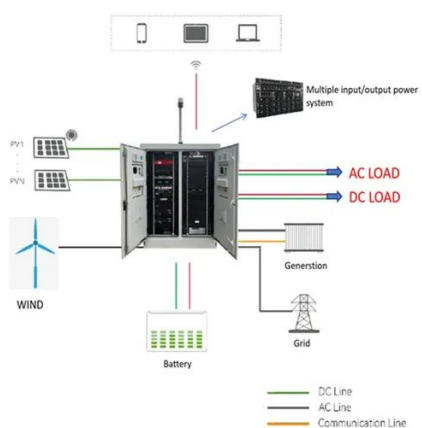


These air conditioners are constantly running throughout the year, consuming large amounts of energy. Many electronic cabinets found in base stations and cell towers are cooled needlessly ...



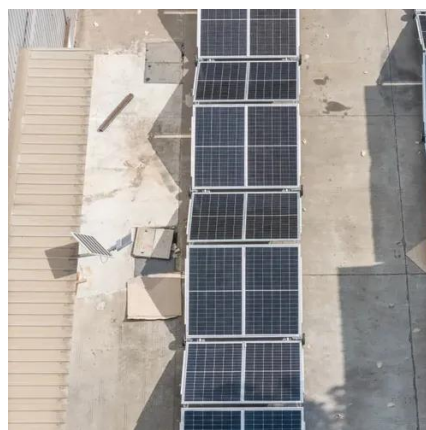
### 5G Base Station Architecture

Standalone Base Station Introduction to Standalone Base Stations A 5G Base Station is known as a gNode B (next 'generation' ...



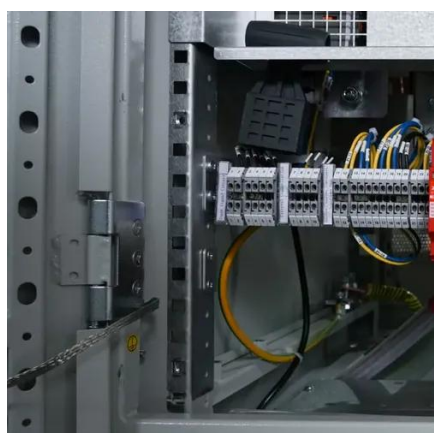
### Products - Outdoor Base Station Cabinets & Energy Storage ...

Explore Huijue's complete product portfolio, including base station energy cabinets, outdoor base station cabinets, battery enclosures, and cabinet energy storage systems. Designed for ...



### Battery Room Design Aspects , PDF , Electrical Substation

This document outlines design requirements for battery rooms containing vented lead acid batteries. It specifies that battery rooms must be properly ventilated, include safety equipment ...



### What are the standard requirements for battery energy storage cabinets



When installing battery energy storage cabinets, several considerations should be prioritized to ensure optimal performance and safety. Site selection is one of the most ...





## Contact Us

---

For inquiries, pricing, or partnerships:

<https://zawojcsolina.pl>

Phone: +48 22 173 6647

Email: [info@zawojcsolina.pl](mailto:info@zawojcsolina.pl)

Scan QR code for WhatsApp.

