



Are two solar battery cabinet cabinets connected in series





Overview

To achieve a 12VDC to 120/230VAC system, both PV panels and batteries are connected in parallel. To wire multiple batteries for your solar power system, use the right connection type – series or parallel.

To achieve a 12VDC to 120/230VAC system, both PV panels and batteries are connected in parallel. To wire multiple batteries for your solar power system, use the right connection type – series or parallel.

The decision to wire batteries in series or parallel, or a combination of both, significantly impacts the efficiency and longevity of the system. This comprehensive guide explores the intricacies of these options. Batteries in series vs. parallel - What's the difference?

Batteries in series vs.

In this page we will illustrate the different types of batteries used into most wind and solar power systems and we will teach you how to wire them together in series and in parallel, in order to get a greater capacity or a higher rated voltage, depending on your needs. In this way we will get an.

Comparison of Connections: Learn the difference between series and parallel battery connections; series increases voltage, while parallel boosts capacity. Increased Storage and Performance: Connecting multiple batteries enhances energy storage, improves system performance, and extends the lifespan.

Understanding how to connect these batteries in series or parallel is crucial for optimizing performance and ensuring efficient energy use. This guide explains the differences between these connection methods and how to implement them effectively. Wholesale lithium golf cart batteries with 10-year.

Two parallel strings of two modules in series. Electrical equipment is rated by how much electricity they use, make, or store. For example, a 100W solar panel can make (under standard test conditions, STC) 18 volts (V) and 5.5 amps (A). A 1200Wh battery is rated by both the 12V and 100Ah capacity.

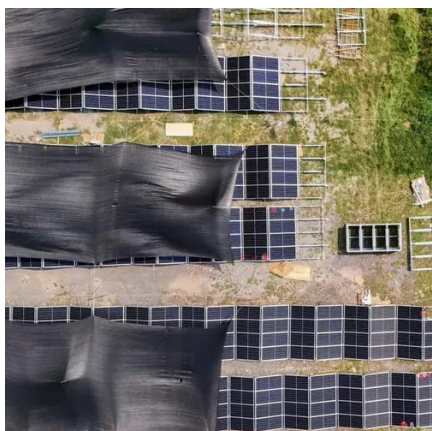
This section explains the different types of batteries used in wind and solar power



systems, and how to wire them together in series and parallel. To achieve a 12VDC to 120/230VAC system, both PV panels and batteries are connected in parallel. To wire multiple batteries for your solar power system.



Are two solar battery cabinet cabinets connected in series



[How to Wire Two or More Solar Panels in Series](#)

How to wire in series both identical and different solar panels, what happens to the panels in case of shading, how to optimize the system, what is the function of the bypass diode and which ...

[How To Wire Solar Panels In Series Vs. Parallel](#)

How you wire solar panels will influence how much energy a solar system produces. Find out if wiring in series, parallel, or both, is best for you.



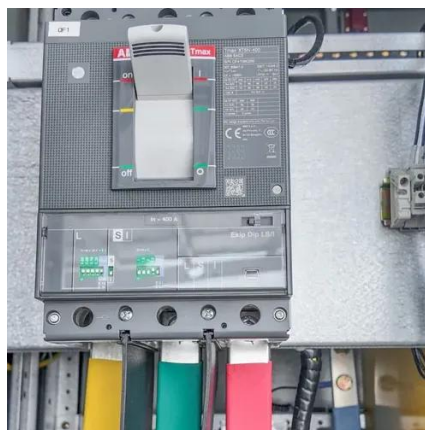
[Series vs. Parallel - Your Guide to Solar Panel and ...](#)

And just like panels there are two ways to connect your batteries: in series and in parallel. Connecting batteries in series means linking the positive ...



[How to Connect Two or More Batteries in Series and Parallel](#)

In this page we will illustrate the different types of batteries used into most wind and solar power systems and we will teach you how to wire them together in series and in parallel, in order to ...



[Series vs Parallel Battery Configurations: ...](#)

See how series vs parallel battery configurations impact your system. Make smarter choices for voltage, capacity, runtime, and energy ...



[ESS-GRID Cabinet Brochure EN-250106](#)

The ESS-GRID Cabinet series are outdoor battery cabinets for small-scale commercial and industrial energy storage, with four different capacity options based on different cell ...



[How to Connect & Charge Batteries in Series / ...](#)

The POS (+) of the last battery in the series will connect to your application / charger. For most of our customers, 6-volt batteries will ...



[Connect two solar energy storage cabinets in series](#)



Energy Storage Battery Cabinet Market Growth
The global energy storage battery cabinet market is experiencing unprecedented growth, with demand increasing by over 500% in the past three ...

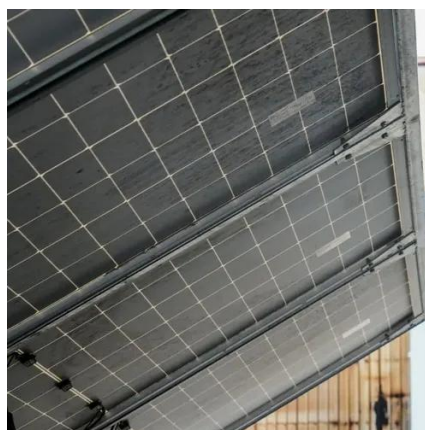


[Batteries in Series vs Parallel: What You Need to ...](#)

The optimal solution is to connect two battery groups in series to achieve a 24V 100Ah specification. By creating four of these series ...

[How To Connect Solar Batteries In Series And Parallel](#)

This guide details various battery types used in solar and wind systems and explains how to wire them in series or parallel to achieve desired capacity or voltage.



[How to Connect Multiple Batteries for Solar: A Step-by-Step ...](#)

Discover how to efficiently connect multiple batteries for your solar power system in this comprehensive guide. Learn the benefits of different battery types, including lead-acid and ...

[Schematics: Wiring Solar Panels and Batteries in ...](#)



Wiring solar panels in series (plus to minus) will increase the volts, but leave the amps the same. For example, wiring two 18V solar panels together as ...



[Battery Enclosures, Cabinets & Racks](#)

Whether you require a standalone battery enclosure or shelving for an equipment shelter, outdoor battery cabinet or trailer enclosure, ICS ...



[How To Connect Batteries In Series and Parallel](#)

Learn how to configure batteries in series, parallel, or series and parallel. Complete battery configuration guide for increased power at ...



[Lithium Solar Batteries Series vs Parallel ...](#)

Is it better to use series or parallel connections for solar storage? It depends on your specific needs; use series for higher voltage ...



[Lithium Solar Batteries Series vs Parallel Connection](#)



Is it better to use series or parallel connections for solar storage? It depends on your specific needs; use series for higher voltage requirements and parallel for increased ...



BATTERY CABINET

Inside of the PWRcell Battery Cabinet, battery modules are stacked two deep on three levels, allowing for up to six modules to be connected in series. You can upgrade an existing PWRcell ...



Generac PWRcell 2

Generac PWRcell 2 System Specifications
Generac PWRcell 2 System Design Components Of PWRcell 2 Home Energy System
PWRcell 2 Battery Cabinet
Up to 18 kWh energy capacity ...



[Wiring Two Batteries in Series: A Comprehensive ...](#)

What Does Wiring Two Batteries in Series Mean?
Wiring two batteries in series involves connecting them end-to-end so that the ...

[Can solar battery cabinets be connected in parallel?](#)



In conclusion, solar battery cabinets can be connected in parallel, offering increased energy storage capacity, redundancy, and load - balancing benefits. However, it is ...



[Series vs. Parallel - Your Guide to Solar Panel and Battery and](#)

And just like panels there are two ways to connect your batteries: in series and in parallel. Connecting batteries in series means linking the positive terminal of one battery to the ...

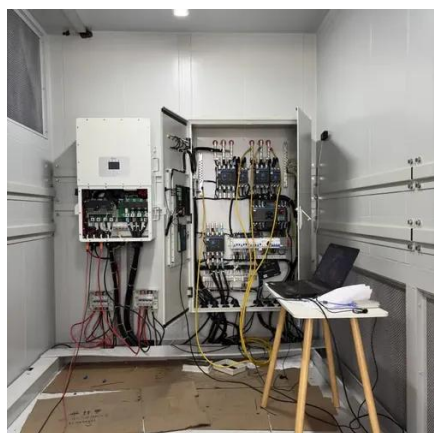
[Solar Panel Series vs Parallel: Which is Better?](#)

Discover the optimal choice between solar panel series vs parallel configurations. Learn how to maximize efficiency and output with our ...



[Schematics: Wiring Solar Panels and Batteries in Series and Parallel](#)

Wiring solar panels in series (plus to minus) will increase the volts, but leave the amps the same. For example, wiring two 18V solar panels together as shown will increase the output from 18V ...



[How to Connect Batteries in Series](#)



To connect batteries in series, link the positive terminal of one battery to the negative terminal of the next. Whether you're powering a ...

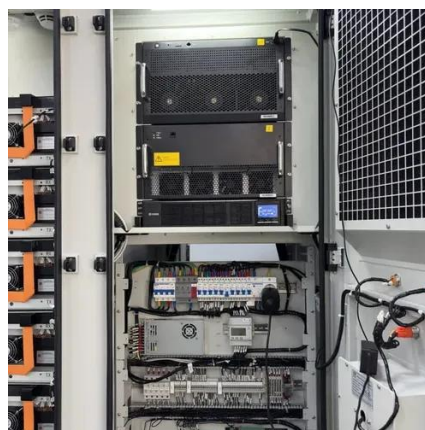


[Batteries in Series vs Parallel: What You Need to Know](#)

The optimal solution is to connect two battery groups in series to achieve a 24V 100Ah specification. By creating four of these series pairs and then connecting the pairs in ...

[Batteries in Series vs Parallel: Understand The Differences](#)

Yes, but the prerequisite is that the two batteries connected in parallel must be produced by the same battery manufacturer, and the battery specifications and BMS are the same.



[How To Connect Batteries In Series & Parallel](#)

No, batteries should always be the same voltage when connected together in series or parallel; otherwise you risk damage to your batteries as well as an unbalanced ...

[How To Connect Batteries In Series & Parallel](#)



No, batteries should always be the same voltage when connected together in series or parallel; otherwise you risk damage to ...





Contact Us

For inquiries, pricing, or partnerships:

<https://zawojcsolina.pl>

Phone: +48 22 173 6647

Email: info@zawojcsolina.pl

Scan QR code for WhatsApp.

