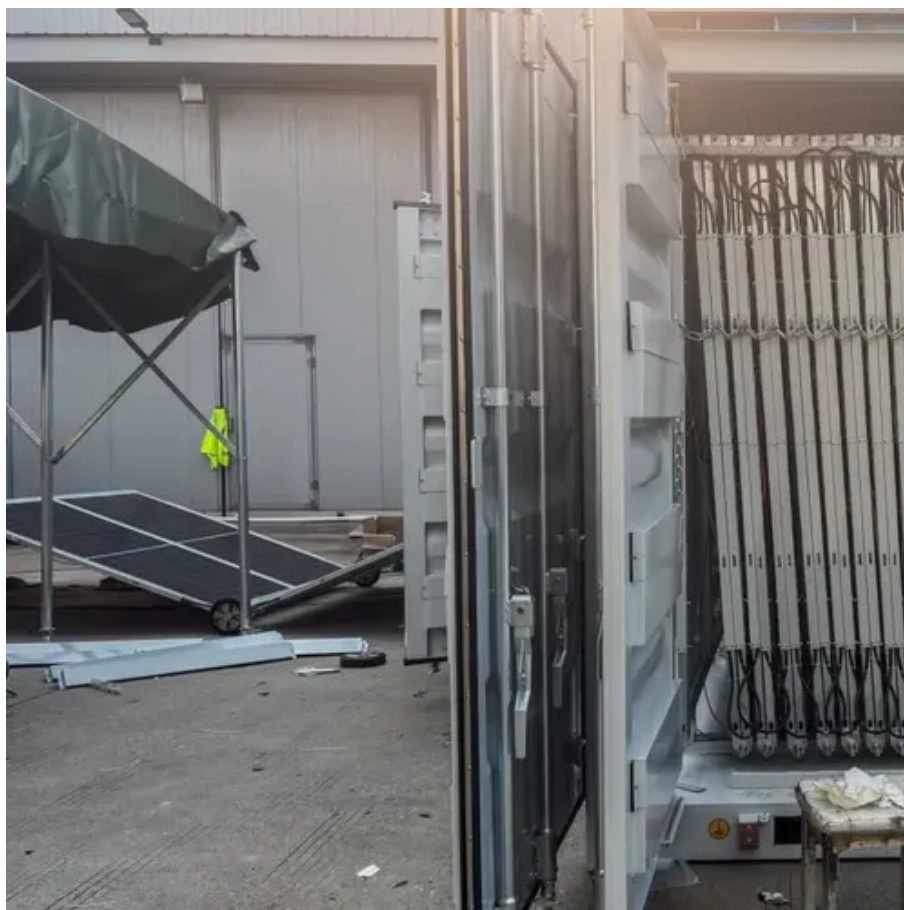




60kW Communication Power Supply Rack Operation Guide

Member Price





Overview

This manual is intended for end-users of a 60kW InfraStruXure PDU. It covers the operation and basic network configuration of the PDU, and includes basic InfraStruXure system operation.

This manual is intended for end-users of a 60kW InfraStruXure PDU. It covers the operation and basic network configuration of the PDU, and includes basic InfraStruXure system operation.

This manual is intended for end-users of a 60kW InfraStruXure PDU. It covers the operation and basic network configuration of the PDU, and includes basic InfraStruXure system operation. For additional information about the InfraStruXure system, see the InfraStruXure 60kW Installation and Start-Up.

Recycled cardboard content is minimum 70% (50% in US). Some orders may include non-recycled cardboard until stock runs out. Whether the product has been included in a global take-back program. Some products are eligible in some geographies, please verify if it's available in your country. Designed.

-480V inverter. Failure to follow any of the instructions or warnings in this document can result in electrical shock, serious injury, or death. Damage to the 60K-3P-480V inverter is also possible, potentially rendering all connections. Ground MUST be bonded to Neutral ONLY ONCE are UNGROUNDED. Note.

The American Power Conversion (APC) 60kW InfraStruXure™ System represents a groundbreaking advancement in power management for critical facilities. Designed for data centers and environments with extensive IT infrastructure, this system stands out for its scalability, reliability, and efficiency.

About This Manual Audience This manual is intended for end-users of a 60kW InfraStruXure PDU. It covers the operation and basic network configuration of the PDU, and includes basic InfraStruXure system operation. For additional information about the InfraStruXure system, see the InfraStruXure 60kW.

APC Trade-UPS is a 1-phase UPS program that offers new and existing customers the ability to trade in older battery backup units for the most up-to-date 1-phase power protection models at discounted prices. Select UPS (s) for your purchase.



Continue to add units until you meet your minimum. Does the Sol-Ark 60k-3p-480v have a power supply?

power supply) Transmitters placed inside the user area of the Sol-Ark can cause interference. On multi-system installations, the emergency stop button must be wired to the designated "Master Transmitter C" (RSD Warning). The Built-in 12Vdc power supply of the Sol-Ark 60K-3P-480V (Pins 7 & 8) is rated for 100mA (1.2W).

What is the maximum battery charge/discharge for a 60k-3p-480v?

connections. The 60K-3P-480V reaches a max battery charge/discharge of 50A per terminal for a total max of 100A if using both sets of battery terminals. If only one set of terminals is used, the battery charge/discharge will be limited to 50A. Sol-Ark 60K-3P-480V is a HIGH VOLTAGE BATTERY system. You MUST NOT exceed 800VDC.

What is a rack mount power supply?

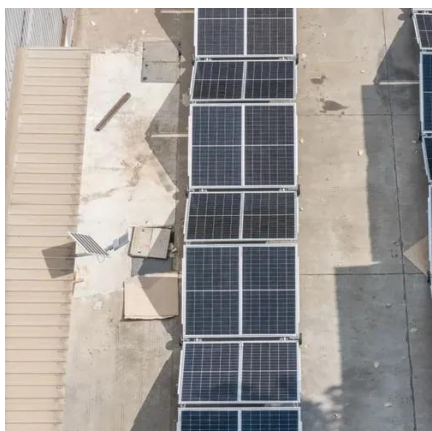
Our rack mount power supplies deliver reliable, programmable DC power in a compact form factor that fits directly into standard 19" racks—making them ideal for ATE systems, production lines, and high-density test environments.

How does the Sol-Ark 60k-3p-480v inverter work?

inverter limiter The Sol-Ark 60K-3P-480V inverter will simultaneously utilize different available power sources to satisfy load demand in the electrical service panels (essential loads panel / main service panel). The following work modes allow the user to determine how power is generated



60kW Communication Power Supply Rack Operation Guide Member Pr



[InfraStruxure PDU 60kW 208V/208V](#)

Designed to increase flexibility and agility of data center power distribution through a design that does not require a raised floor.

[American Power Conversion 60kW InfraStruXure™ System guide](#)

The American Power Conversion (APC) 60kW InfraStruXure(TM) System represents a groundbreaking advancement in power management for critical facilities. Designed for data ...

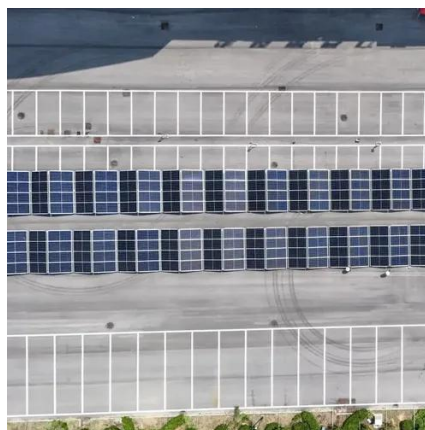


InfraStruXure Type C

This manual is intended for end-users of a 60kW InfraStruXure PDU. It covers the operation and basic network configuration of the PDU, and includes basic InfraStruXure system operation.

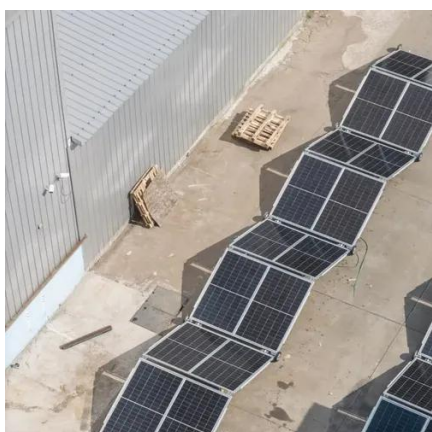
[TDK-Lambda Data Library](#)

Essential reading for safe installation and operation of our power supplies



TS Series

The TS Series delivers 5 to 100 kW of programmable DC power in rugged 3U to 16U rack-mount enclosures, with 279 models spanning 5 to 6000 V ...



[GENESYS+\(TM\) Rack DC Power Systems , Products](#)

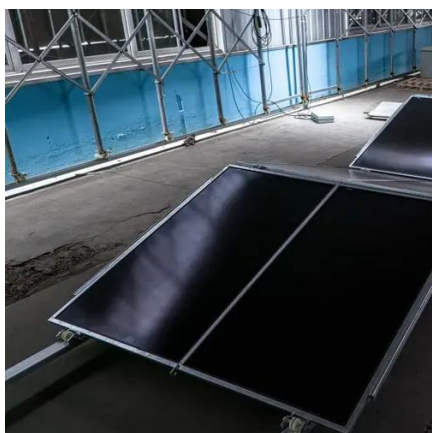
...

Output power levels cover 30kW, 45kW, 60kW and 90kW in a 23U Rack System profile, offer low-noise performance and have Output voltage ...



[Installation & Operation Manuals/Guides](#)

PVI 23TL & PVI 28TL Installation and Operation Manual - For Inverters with Serial Number Prefixes 101301 to 101302 (Rev G) (pdf) PVI 25TL-208 Installation and Operation Manual (pdf)



[Powerware 9315 UPS 300-500 kVA Operation Manual](#)



Powerware 9315 UPS 300-500 kVA Operation Manual IMPORTANT SAFETY INSTRUCTIONS SAVE THESE INSTRUCTIONS This manual contains important instructions that you should ...



60 kVA / 48 kW 3 Phase Battery Backup ...

The 60,000 VA (60 kVA) / 48,000 Watt (48 kW) online pure sine wave battery backup uninterruptible power supply (UPS) and power conditioner with ...



APC USA , Schneider Electric United States

APC, a flagship brand of Schneider Electric, provides clean battery back-up power, surge protection, and IT physical infrastructure inside and outside ...



American Power Conversion PD60F6FK1 : Operation and Configuration 60kW

Operation and Configuration 60kW InfraStruXure PDU PD60F6FK1, PD60G6FK1, PD60L6FK1, PDRPPNX10



AND USER MANUAL



A complete Power Cycle IS REQUIRED when changing the battery mode to "No Battery" (see section 2.12 "Power cycle Sequence" for detailed instructions).



[American Power Conversion PDRPPNX10 : Operation and ...](#)

About This Manual Audience This manual is intended for end-users of a 60kW InfraStruXure PDU. It covers the operation and basic network configuration of the PDU, and includes basic ...

[American Power Conversion PDRPPNX10 : Operation and Configuration 60kW](#)

About This Manual Audience This manual is intended for end-users of a 60kW InfraStruXure PDU. It covers the operation and basic network configuration of the PDU, and includes basic ...



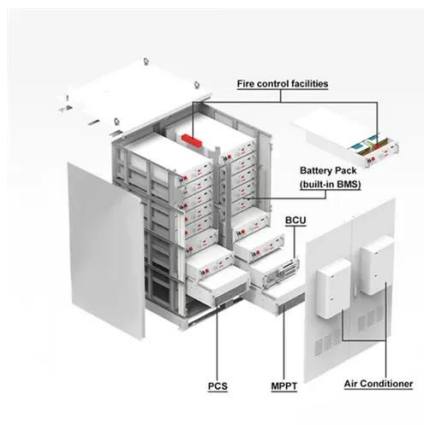
[Eco Mode Operation Rack UPS Power Supply ...](#)

Our main products are UPS Power, Inverter Power, Battery Power, Solar& Wind Power. We are dedicated to offer quality power and power ...

[Rack Mount Power Supplies](#)



Find rack mount DC power supplies for ATE, EV, and industrial test systems. Scalable, programmable, and ready for automation with remote interfaces.



[Eco Mode Operation Rack UPS Power Supply DSP Tech 60kVA 60kw](#)

Our main products are UPS Power, Inverter Power, Battery Power, Solar & Wind Power. We are dedicated to offer quality power and power solution for Data-center, Telecom, Bank, Hospital, ...

[American Power Conversion PD60F6FK1 : Operation and ...](#)

Operation and Configuration 60kW InfraStruXure PDU PD60F6FK1, PD60G6FK1, PD60L6FK1, PDRPPNX10



[Bidirectional DC Power Supply 62000D](#)

Bidirectional DC Power supplies from Chroma provide better control for testing bidirectional EV components, batteries, and PV inverters. The ...

[GENESYS+\(TM\) Rack DC Power Systems , Products ,TDK ...](#)



Output power levels cover 30kW, 45kW, 60kW and 90kW in a 23U Rack System profile, offer low-noise performance and have Output voltage ratings from 10V to 1500V (and Output current ...



GVSBPSU60G-WP

Schneider Electric USA. GVSBPSU60G-WP - Galaxy VS Maintenance Bypass Panel, single unit, 10-30kW 208V, 20-60kW 480V wallmount.

[InfraStruxure PDU 60kW 208V/208V.APC](#)

Features, specifications, and accessory information about APC InfraStruxure Power Distribution Units. North American Safety Approval for Device Management, Access and Environmental ...





Contact Us

For inquiries, pricing, or partnerships:

<https://zawojcsolina.pl>

Phone: +48 22 173 6647

Email: info@zawojcsolina.pl

Scan QR code for WhatsApp.

